

BURT TOWNSHIP RECREATION PLAN

2026-2031

DRAFT January 2026



BURT TOWNSHIP
RESOLUTION

(Space reserved for formal resolution)

CONTENTS

This plan could not have been completed without the dedication and support from the Township staff and volunteers:

Burt Township Planning Commission
 Rod Lowe Walt Mixon
 Phil Bontrager Victor Senk
 Christine Lundquist

Burt Township Board
 Jon Babbitt Sara Secrest
 Lori McShane Tim Jenkins
 Paul Williams

Township Staff
 Calvin McShane
 Heather Dobberstein

Community Organizations
 Grand Marais Historical Society
 Burt Township Schools

Burt Township Citizens!

THANK YOU!

1	INTRODUCTION + PURPOSE Planning Process and Guiding Principles	4
2	COMMUNITY DESCRIPTION Demographics + History	8
3	ADMINISTRATIVE STRUCTURE Township Staffing + Funding	11
4	NATURAL ENVIRONMENT Landscape Typologies, Soils, Terrain, and Wildlife	14
5	RECREATION INVENTORY Recreation Resources within the Township	26
6	COMMENTS + ISSUE SCOPING Community Survey Responses	36
7	VALUES, GOALS, + OBJECTIVES Community Values and Statewide Recreation Planning	40
8	ACTION PLAN Priority Projects	44
APPENDIX A	PUBLIC NOTICES + SURVEY RESULTS	48
APPENDIX B	GRANT HISTORY	75
APPENDIX C	UNIVERSAL ACCESS DESIGN GUIDELINES	77
APPENDIX D	MARINA MAINTENANCE SCHEDULES	82

1

Introduction

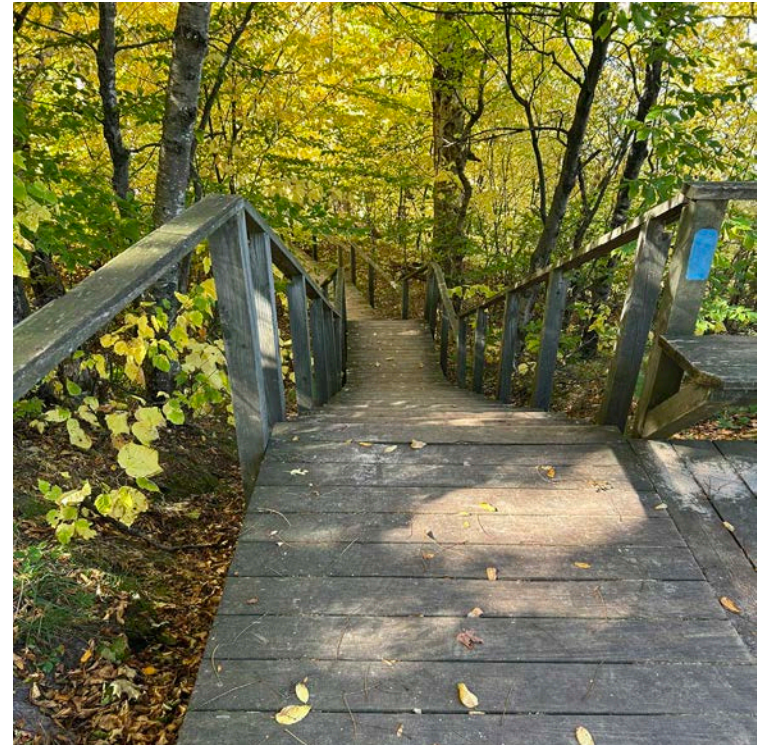
5-YEAR RECREATION PLAN

Communities throughout Michigan develop and update recreation plans to ensure qualification for annual Michigan Department of Natural Resources (MDNR) funding opportunities.

The 5-year recreation plan must adhere to a format defined by the MDNR and outline priority goals, objectives, and projects with the potential to be completed within the 5-year window and beyond.

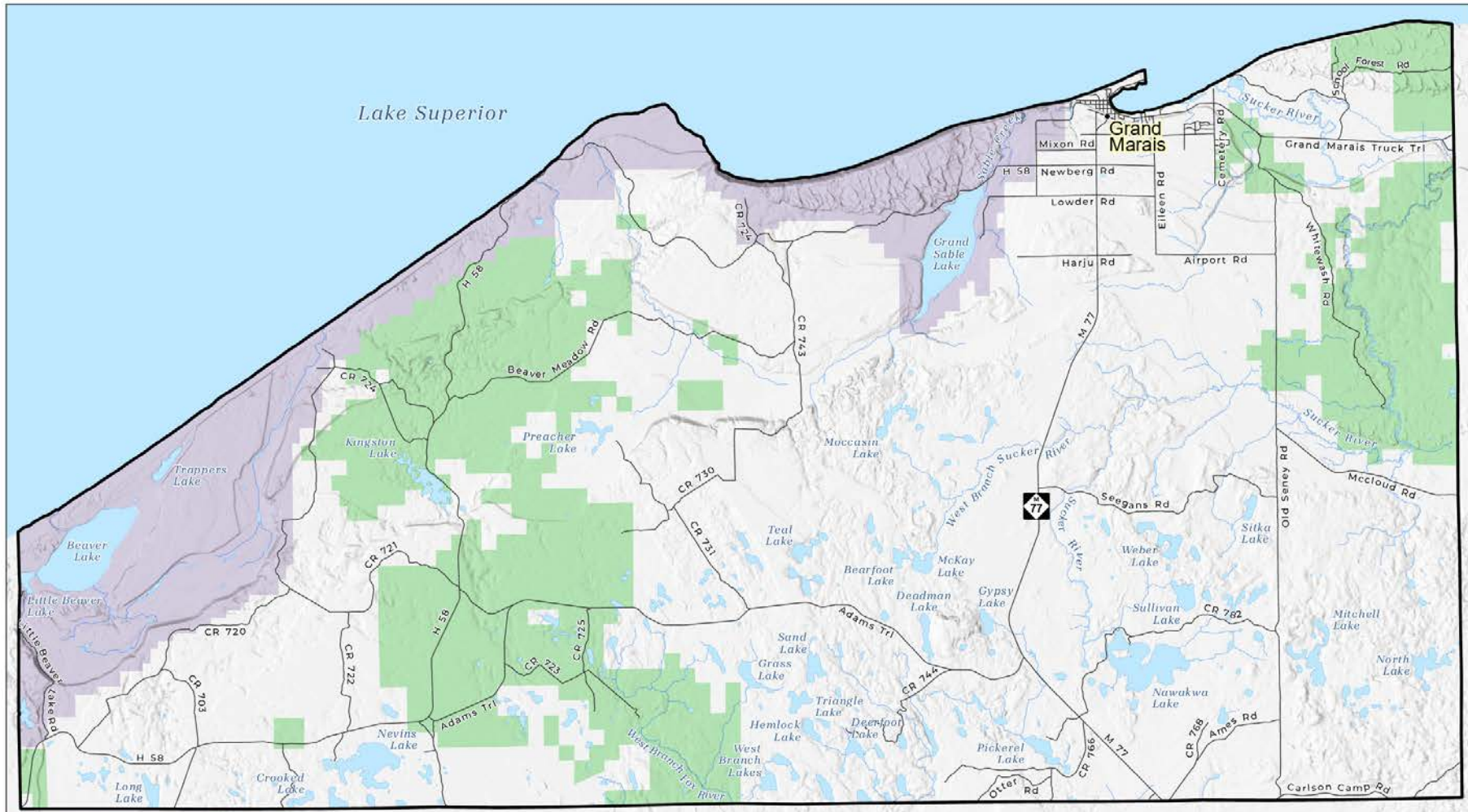
This document synthesizes data on community demographics, natural resources, existing recreational assets, operational management, citizen input, and community partnerships to generate an all-inclusive map for recreation in the community. It describes community values, highlights common goals and objectives, and outlines strategies to achieve these goals.

Looking beyond the 5-year window, this document will serve as a road map for future endeavors improving parks for decades to come. The 2026-2031 Recreation Plan will assist township officials in determining priority projects to nurture an already expansive parks system. It will outline strategies for making parks accessible to all and provide park designs that allow future generations to grow and prosper within.



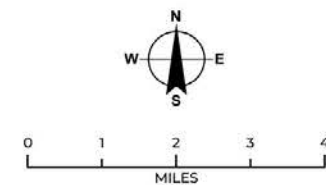
“I HAVE SO MUCH APPRECIATION FOR THE PARKS AND RECREATION SPACES IN BURT TOWNSHIP AND BELIEVE IN A STRONG PARKS AND RECREATION PLAN TO SET OUT A VISION FOR THE COMMUNITY. WITH INCREASING RECREATIONAL PRESSURE (AND DEVELOPMENT PRESSURE) AND GROWING SEASONAL/ VISITOR POPULATION, INCLUDING EMPHASIS ON CONSERVATION AND STEWARDSHIP, INCORPORATING GREEN DESIGN ELEMENTS AND PUBLIC EDUCATION ON HOW TO RECREATE WITH THE LEAST IMPACT SHOULD BE PRIORITIZED IN THE PLAN.”

-LOCAL RESIDENT



Burt Township Recreation Plan Overview

- Populated Place
- Road
- River
- Lake
- ▭ Burt Township
- DNR State Land
- Pictured Rocks National Lakeshore




The Central Upper Peninsula Planning and Development Regional Commission (CUPPAD) disclaims any warranty or liability regarding the accuracy, reliability, and integrity of the "as is" information included in this map.

PLANNING PROCESS

RECREATION PLAN





“ I LOVE THAT THE PARKS ARE CLEAN AND SIMPLE. I LIKE THAT THEY HAVE JUST ENOUGH PICNIC TABLES AND AMENITIES WITHOUT BEING OVERLY BUILT UP OR DETRACTING FROM THE NATURAL BEAUTY.”

-TOWNSHIP RESIDENT

2 Community Description

HISTORY + DEMOGRAPHICS

Burt Township is a civil township located in Alger County in Michigan's Upper Peninsula. Nestled along the southern shores of Lake Superior, the township is best known for being home to the village of Grand Marais, a gateway to the eastern entrance of Pictured Rocks National Lakeshore—one of Michigan's most iconic natural landmarks.

With its dramatic lakefront views, towering cliffs, waterfalls, and pristine forests, Burt Township draws nature lovers, hikers, and photographers year-round. Tourism is the backbone of the local economy, offering a plethora of activities, unforgettable views, and areas of interest no matter the season. Despite its remote and rural setting, the township maintains a strong sense of community. It also plays an important role in preserving Michigan's natural heritage through its proximity to protected lands and environmentally significant habitats.

Burt Township was officially organized in 1880, during a time of rapid development in Michigan's Upper Peninsula. Like many communities in the U.P., its early history is deeply tied to the logging industry. The dense forests surrounding Lake Superior were rich in white pine and hardwoods, which were in high demand during the late 19th century.

The community of Grand Marais, located within the township, quickly became a key port on Lake Superior for transporting timber. Logs were floated down local rivers or transported by rail and then loaded onto ships in Grand Marais Harbor. The town's harbor, naturally protected and deep, was vital to the area's economic development and led to the growth of supporting infrastructure, such as sawmills, general stores, and housing for workers. Historically, Grand Marais was built upon the fishing and logging industries. The decline of the logging industry in the early 20th century led to a significant population drop and economic slowdown, a pattern common across many U.P. towns. However, the region's stunning natural beauty began to attract a different kind of visitor—tourists, hikers, and outdoors enthusiasts. In 1966, a major turning

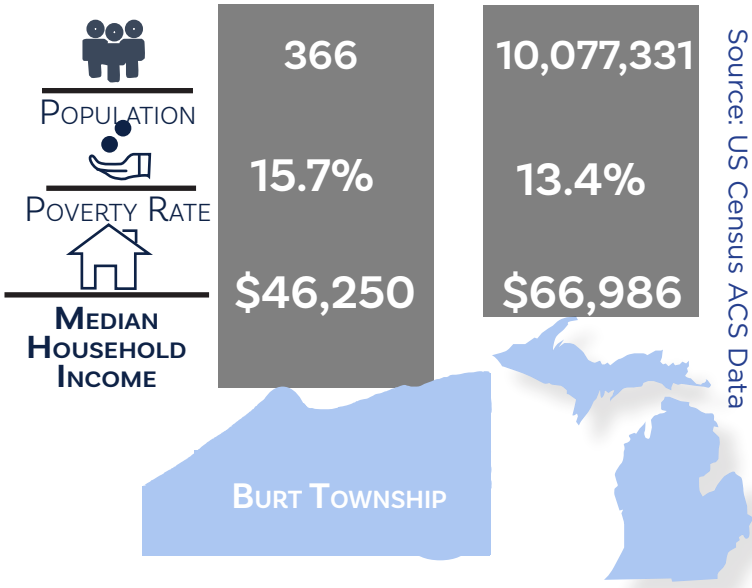


TOWNSHIP DATA

YEAR	POPULATION CHANGE FROM 1970-2020						PERCENT CHANGE
	1980	1990	2000	2010	2020	2023	2000-2023
BURT TOWNSHIP:	627	556	443	372	438	366	-19.3%
MICHIGAN:	9,262,044	9,295,277	9,938,444	9,883,640	10,077,331	10,037,261	+1.2%

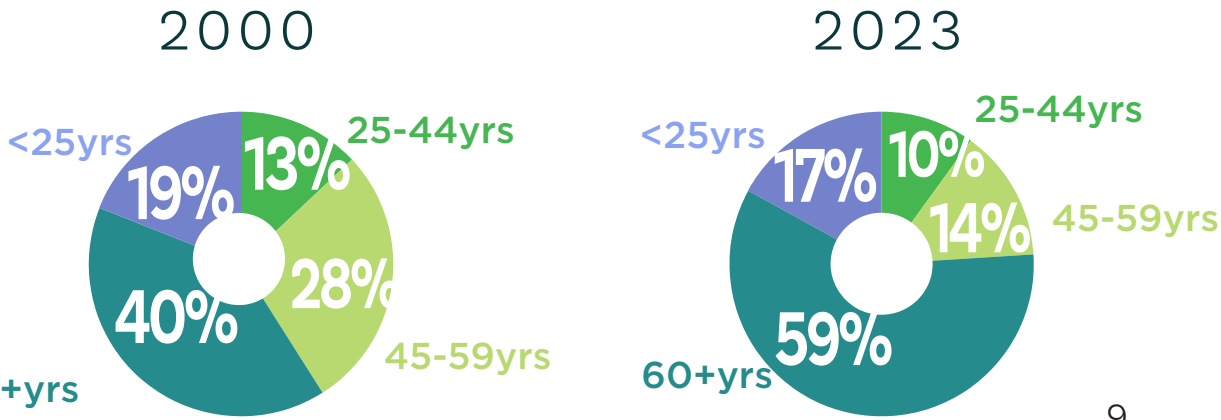
point came when Pictured Rocks National Lakeshore was established. It was the first National Lakeshore in the United States, protecting the dramatic sandstone cliffs, waterfalls, and forested shoreline along Lake Superior. The eastern gateway to Pictured Rocks is located in Grand Marais, making Burt Township a vital entry point and hub for park visitors. Today, Burt Township’s identity is shaped by this legacy: a former logging center that transformed into a quiet, tourism-based community centered around natural conservation and recreation.

Assessing the number of people in the community and their demographic characteristics helps planners and policy makers determine the needs of the community. For recreation planning, demographic data is useful when defining recreation goals and guidelines for a community. The figures in this section have been sourced from the most current US Census database.



The 2023 population of Burt Township was 366 a slight decrease from the 2000 figure of 443 (see chart above). The median age was 67, much older than the median age in 2000 of 55. These figures, paired with the Age Distribution pie charts below indicates an aging demographic within the township. The age cohorts show how age is distributed over time in the township. Every cohort except

AGE DISTRIBUTION



those over 60 has shrunk over the past 20 years. Most notably, those aged 45-59 went from 28% to 14% in 2023. Those aged over 60 grew from 40% in 2000 to 59% in 2023. Not only is the population of Burt Township aging, but other age categories are shrinking as well. This presents challenges when planning for recreation. It is also important to note that an estimated 18% of the township's population has a disability. This means it is increasingly important to incorporate accessibility upgrades into community spaces and projects, meeting universal accessibility standards when possible.

In 2023 the median household income in the township was \$46,250, an increase of about 44.5% from \$30,278 in 2000. Burt Township's median household income is considerably less than the state's, at \$66,986, but is typical of a rural community. The poverty rate for the township is 15.7%, a couple of percentage points higher than the state's average.

With its growing elderly population and shrinking juvenile population, its important to plan parks and recreational spaces for the people most likely to use them: year round residents. However, making sure there are age appropriate amenities for both young and old will help young families in the area and visitors.

It can be helpful to view national trends, as well. While Burt Township is rural and small, by looking at the National Recreation and Park Association's statistics, we can see that Burt Township has many more parks per resident, less employees related to recreation, and while the economic impact is not quite the national average, it is still significant for the area and the entire Upper Peninsula.



The National Recreation and Park Association [NRPA] assembles annual reports featuring park metrics throughout the nation. The goal of this document is to help local park systems identify the optimal mix of facilities and programming for their community. Key 2023 findings are listed below:

Mission:

To advance parks, recreation, and environmental conservation efforts that enhance the quality of life for all people.

Pillars:

Health & Wellness
Social Equity
Conservation

3,759 Residents
per playground



10.8 acres
of parkland for
every 1,000
residents

Residents per Park:

2,287



Full-Time Equivalent
Employees (FTEs) per
10,000 Residents:

8.9



Economic Activity
related to parks:

\$218B



14 miles of
silent sport trails

Key programming activities include themed special events, social recreation events, team sports, fitness enhancements classes, and health + wellness education.



2023 KEY FINDINGS

3 Administrative Structure

Burt Township is governed by a 5 member Township Board and a 7 member Planning Commission. Each meet on a monthly basis. The Township Board oversees the operation, programming, and maintenance of the parks and recreation facilities along with the Planning Commission.

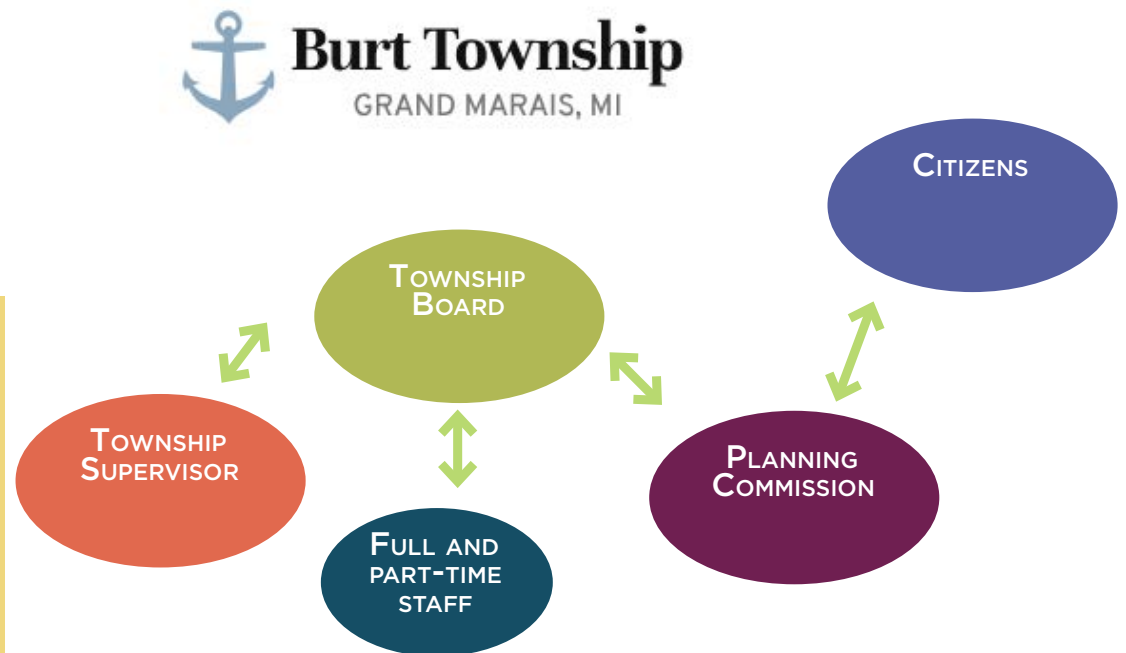
The Board maintains financial authority over the parks and recreation budget through recommendations from the Planning Commission and other township departments. Citizens can make their views and preferences known during the public comment section at Planning Commission meetings which take place at the Community Center on the third Tuesday of each month at 6pm ET.



OPERATING EXPENDITURES PER ACRE The median level of operating expenditures is \$7,823 per acre of park and non-park sites managed by the agency.

OPERATING EXPENDITURES PER FTE The typical park and recreation agency spends \$102,530 in annual operating expenditures for each employee.

DISTRIBUTION OF OPERATING EXPENDITURES At the typical park and recreation agency, staffing costs account for 54% of the operating budget.



Neighboring Organizations, Schools, and Volunteers

Burt Township has a strong history of collaboration with the Burt Township School District. The school is a source of pride in the community and together they seek opportunities to create or improve recreational facilities that will have a direct positive impact on students’ access to recreation.

In addition to the local government bodies, Burt Township has a strong and passionate volunteer base, made up of both residents and non-residents who care about the future of the area. These organizations, schools, and community groups often fill in the gaps in recreational programming, trail maintenance, and events, focusing on community engagement and real community change.

Budget + Funding

Burt Township maintains a dedicated Park Fund (Fund 508) for the operation, maintenance, and improvement of local recreational facilities, including Woodland Park Campground, the Community Center, Library, and other park areas. The fund is supported primarily through user fees, camping reservations, community center rentals, and donations. Revenues fluctuate with seasonal demand but consistently cover a substantial portion of operational expenses. The Township’s strong fund balance allows for continued reinvestment in facilities and future improvements.

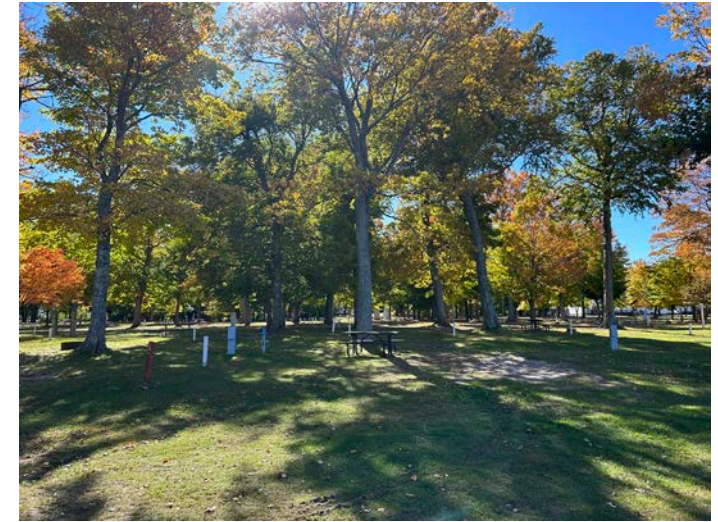


Burt Township Park Fund Over Time

FY 2020	FY 2021	FY 2023	FY 2024	FY 2025
\$462,801	\$792,673	\$673,720	\$773,651	\$887,667

Burt Township Recreation Expenses

Annual campground revenue provides the majority of income, offsetting operational and maintenance costs. Planned capital improvements focus on enhancing public amenities, accessibility, and sustainability. Burt Township will continue to pursue state and federal grant opportunities to leverage local funds for future park and recreation enhancements.



EXPENDITURES	FY 2024	FY 2025 (PROJECTED)	NOTES
Personnel (Wages, Taxes, Benefits)	\$196,000	\$179,000	Includes campground, library, and community center staff
Operating Expenses (Supplies, Utilities, Insurance)	\$132,000	\$123,000	Supplies, utilities, and general insurance
Repairs & Maintenance	\$90,000	\$36,700	Facility and equipment upkeep
Capital Improvements & Equipment	\$484,900	\$60,600	Community center and park facility upgrades
Debt Service	\$62,000	\$13,500	Loan and lease payments
Contractual & Administrative	\$19,000	\$13,500	Audit and administration costs
Total Expenditures	\$984,000	\$426,000	

Source: Burt Township Budget Reports, 2025

4 Natural Environment

LANDSCAPE TYPOLOGIES

Burt Township is home to a diverse array of natural areas. Here, landscape typologies are utilized to showcase the various landforms influenced by terrain, soils, exposure and vegetation. By developing a clear understanding of what landscapes the county has and where they are located a more holistic understanding of the region is generated. Recreation opportunities, preferred connections between typologies, and preservation priorities begin to emerge allowing communities to formulate a vision for the ideal future landscape. Striking the right balance of development and preservation of natural resources within a community is key to maintaining a long lasting beautiful place for generations to explore and appreciate.



CONIFER FOREST

Pine forests are found throughout the township, providing a habitat for a unique array of plant and animal species.



DECIDUOUS/MIXED FORESTS

Upland areas contain beautiful deciduous/mixed forests. The original tree stands are what drew settlers to the land initially. Now the forests provide a jaw-dropping fall color display.



INLAND LAKES + RIVER CORRIDORS

Inland lakes dot the landscape providing a haven for many different plant and animal species as well as spaces for fishing, birding, hiking, paddling, camping and sightseeing.



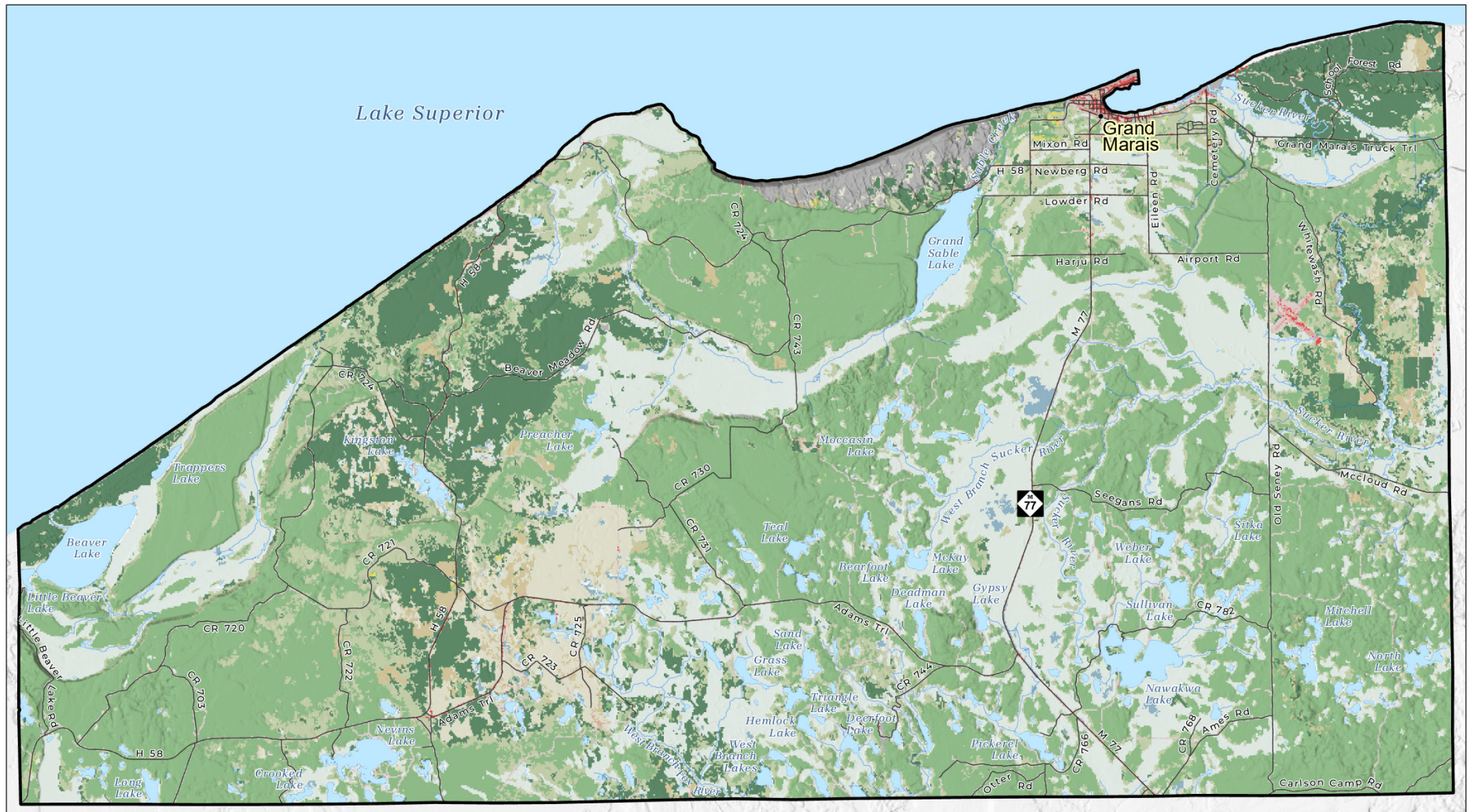
WETLANDS

These areas contain a variety of plants including wood sorrel, sedges, dogwood and various wildflower species.



HARDSCAPE + GRAVEL

Beyond the main highways, county thoroughfares, and pockets of urban and residential development, the roads are often gravel. These provide a network of gravel bike routes and ORV routes as well.



Burt Township Recreation Plan

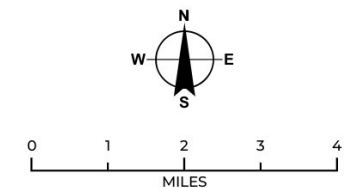
Land Cover

Land Cover

- Developed, Open Space
- Developed, Low Intensity
- Developed, Medium Intensity
- Developed, High Intensity
- Barren Land
- Deciduous Forest

- Evergreen Forest
- Mixed Forest
- Shrub/Scrub
- Herbaceous
- Hay/Pasture
- Woody Wetlands
- Emergent Herbaceous Wetlands

- Populated Place
- Road
- River
- Lake
- Burt Township



The Central Upper Peninsula Planning and Development Regional Commission (CUPPAD) disclaims any warranty or liability regarding the accuracy, reliability, and integrity of the "as is" information included in this map.

WILDLIFE

Deer, bear, moose, and other smaller mammals, birds and amphibians call Burt Township home. An abundance of vegetation provides food and shelter for these residents. The Information for Planning and Consultation site hosted by the U.S. Fish and Wildlife Service notes the potential existence of several threatened and endangered species within the Upper Peninsula. Measures taken to preserve habitat and accommodate these species are critical to maintaining their existence. Water levels along the coastline can impact nesting sites for Piping Plover and Red Knot. Lynx live in boreal forests that often receive heavy snowfall and are home to snowshoe

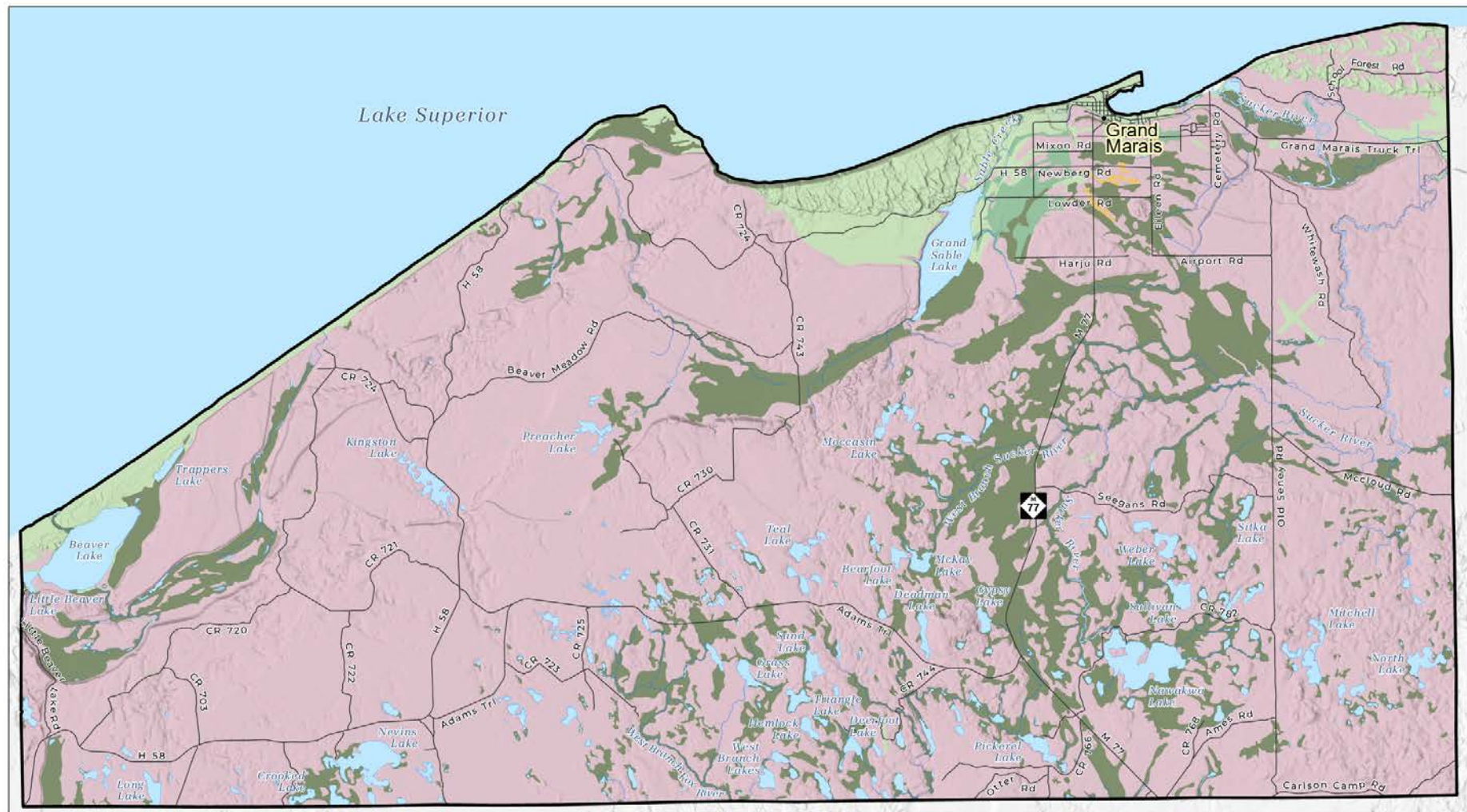
hare. White nose syndrome threatens the Northern Long-eared Bat. The biggest culprit threatening the Monarchs seems to be the disappearance of milkweed. It is critical communities consider these threatened and endangered species when planning for development.

GEOLOGY

Geology and soils provide the foundation for all forms of life and its related activities. Burt Township lies within the northern portion of Michigan's Upper Peninsula along the southern shore of Lake Superior. The township's geologic character is defined by ancient sandstone bedrock and glacial landforms. The exposed Munising Sandstone, part of the Precambrian and Cambrian bedrock sequence, forms the dramatic cliffs and shoreline features seen near Grand Marais and the eastern edge of Pictured Rocks National Lakeshore. Inland, this bedrock is covered by thick layers of glacial till, outwash sands, and gravels deposited when glaciers retreated approximately 10,000 years ago.

Wind and wave action along Lake Superior have shaped extensive coastal dunes and beach ridges, including the well-known Grand Sable Dunes. These dynamic features continue to shift and evolve under the influence of wind, waves, and lake-level changes. The combination of sandstone cliffs, dune formations, and glacial deposits gives Burt Township its scenic landforms and distinctive natural beauty.

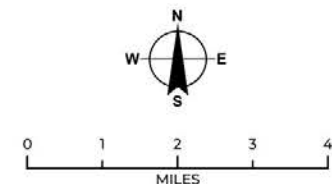




Burt Township Recreation Plan

Soil Map Units

Soil Map Units	Spodosols	• Populated Place	Lake
Entisols	Bodies of Water	— Road	□ Burt Township
Histosols	No Soil	— River	
Inceptisols			
Mollisols			



The Central Upper Peninsula Planning and Development Regional Commission (CUPPAD) disclaims any warranty or liability regarding the accuracy, reliability, and integrity of the "as is" information included on this map.

SOILS

Most soils in Burt Township developed from glacial sands and gravels, resulting in well-drained, moderately to excessively drained profiles. These soils generally support mixed northern hardwood and conifer forests and are well-suited to recreation development such as trails, campsites, and picnic areas when managed to prevent erosion.

Areas near the Lake Superior shoreline and low-lying wetlands often contain poorly drained organic or mucky soils, which are important for wildlife habitat but less suitable for development. Inland depressions and old glacial meltwater channels can also contain peat and muck soils (Histosols) that require protection from disturbance. Because of the township's sandy character, erosion control and vegetation maintenance are important considerations for all outdoor recreation projects.

TOPOGRAPHY

The township's topography is diverse and visually striking. Elevations range from approximately 600 feet above sea level along the Lake Superior shoreline to more than 1,100 feet in the interior uplands. The landscape includes rolling hills, ridges, and broad outwash plains interspersed with lakes, wetlands, and forested valleys.

Along the coast, steep bluffs and dune formations provide panoramic views of Lake Superior, while inland areas offer gently undulating terrain ideal for multi-use trails and natural resource recreation. The variety in elevation and landform contributes to the scenic quality that attracts visitors and supports a wide range of recreational experiences year-round.

NATURAL FEATURES AND LANDSCAPE CHARACTER

Burt Township's natural character is defined by its dramatic relationship with Lake Superior, extensive forests, and glacially sculpted landforms. Together, these features create a landscape that is both visually striking and ecologically rich—providing the foundation for the township's recreation opportunities and sense of place.

The township contains a diverse mix of coastal, forest, and inland ecosystems. Along the Lake Superior shoreline, visitors encounter sweeping sand beaches, towering bluffs, and the shifting Grand Sable Dunes. Inland, rolling glacial hills transition to wetlands, small lakes, and forested uplands dominated by northern hardwoods, pine, and hemlock. The combination of open coastal views and wooded interior terrain creates a distinct visual identity that appeals to residents and visitors alike.

This varied landscape supports a wide range of outdoor activities, beach recreation, biking, kayaking, hiking, snowmobiling, cross country skiing, and nature observation. Seasonal changes—such as fall colors, winter snow cover, and spring meltwater—enhance both the beauty and recreational value of the area.

The township lies within the Northern Great Lakes ecoregion, characterized by cool temperatures, abundant precipitation, and mixed conifer-hardwood forests. The area's soils and landforms support high
20 biodiversity, including wetlands that provide critical

habitat for birds, amphibians, and aquatic species. Portions of the township lie adjacent to Pictured Rocks National Lakeshore and Hiawatha National Forest, connecting local lands to larger conservation corridors and recreation networks.

Maintaining healthy natural systems is essential for recreation planning. Protecting wetlands, dunes, and native vegetation helps sustain the township's scenic quality, water quality, and trail infrastructure. As climate conditions change and visitor use grows, careful management of natural features will help ensure that recreation remains sustainable and compatible with the environment.

RELATIONSHIP TO RECREATION

Burt Township's natural features directly shape its recreation system. The sandy soils and rolling topography provide ideal conditions for trail development, while coastal bluffs and dunes create opportunities for scenic overlooks and interpretive sites. Wetlands and forested areas enhance wildlife viewing, canoeing, and educational programs.

Future recreation improvements should continue to balance access with conservation—enhancing opportunities for residents and visitors while protecting the unique geological and ecological assets that define the township's character.

OPPORTUNITIES AND CONSTRAINTS

Burt Township's distinctive geology, topography, and natural features present both opportunities and limitations for recreation planning and development. Understanding these factors helps ensure that new facilities and programs are designed to enhance public access while preserving the township's natural character.

OPPORTUNITIES

Scenic Landscape and Vistas: The township's varied elevation, forested uplands, and Lake Superior shoreline offer numerous opportunities for scenic overlooks, photography, and nature appreciation. Sites with views of Grand Sable Dunes, Lake Superior, and inland lakes are valuable for passive recreation.

Extensive Public Lands: The presence of Pictured Rocks National Lakeshore and Hiawatha National Forest provides connections to regional trail systems, campgrounds, and recreation destinations. Local partnerships can expand trail links and access points.

Variety of Natural Settings: From coastal dunes and beaches to inland forests and wetlands, the township offers a diverse mix of recreation environments suitable for hiking, biking, paddling, snowmobiling, and wildlife observation.

Sandy, Well-Drained Soils: Much of the township's glacially derived sandy soils are well suited for trail construction, dispersed camping, and other low-impact recreation uses when erosion control practices are implemented.

Community Character and Tourism Appeal: The area's natural beauty supports eco-tourism and nature-based recreation, which align with local goals for sustainable economic development.

CONSTRAINTS

Erosion and Slope Instability: Steep dunes, bluffs, and shorelines are subject to erosion and mass movement. Development in these areas should be limited and designed to minimize disturbance.

Sensitive Ecosystems: Wetlands, coastal dunes, and shoreline habitats are ecologically sensitive and protected by state and federal regulations. Recreation access in these areas should emphasize boardwalks, observation platforms, and interpretive trails.

Drainage and Soil Limitations: Poorly drained or organic soils are common in low-lying areas and are unsuitable for structures, parking areas, or heavily used trails.

Maintenance and Access Challenges: The township's large land area, rural road network, and seasonal weather patterns can make facility maintenance and year-round access difficult.

Balancing Use and Conservation: As outdoor recreation and tourism continue to grow, careful planning will be needed to prevent resource degradation, maintain trail quality, and protect the township's scenic and ecological assets.

TRAILS

Burt Township has a variety of multi-use trails and pathways summarized below. The township could benefit from more wayfinding signage to designate the trailheads, maps of the trails, and promoting connector trail segments for a cohesive trail network through the township and beyond. Upgrading trail accessibility and amenities were frequently mentioned throughout the recreation survey such as, upgrading trail surfaces, parking lots, restrooms, trail signage, safe crosswalks, and safety when heading down to the beach areas.

KEY TRAILHEAD / ACCESS POINT	LOCATION / DESCRIPTION
Donahey Woods Nature Trail	At the western end of the Woodland Park Campground in Grand Marais; access to forest trail + Lake Superior shoreline.
Town Bicycle/Walkway Pathway (Coast Guard Point Agate Beach)	Trailhead near Coast Guard Point (Grand Marais harbor), then heads west through town, linking to campground/ bike path.
North Country Trail Segment (in/near township)	Trailhead(s) where the trail enters/exits township boundaries—connects into regional trail networks to Pictured Rocks and beyond.
Winter Trail/Snowmobile Connector Routes	Several forest road/trailhead access points for snowmobile/ORV usage identified in recreation planning for winter use.
“School Forest” Access (Mountain Bike / Cross-Country Trail Area)	A popular trail for dog walkers and mountain bikers. Potential for user conflict is high.

Michigan
Department of
Natural Resources
Snowmobile Trails
Alger County



Updated: 12/03/2024



0 1 2
Miles

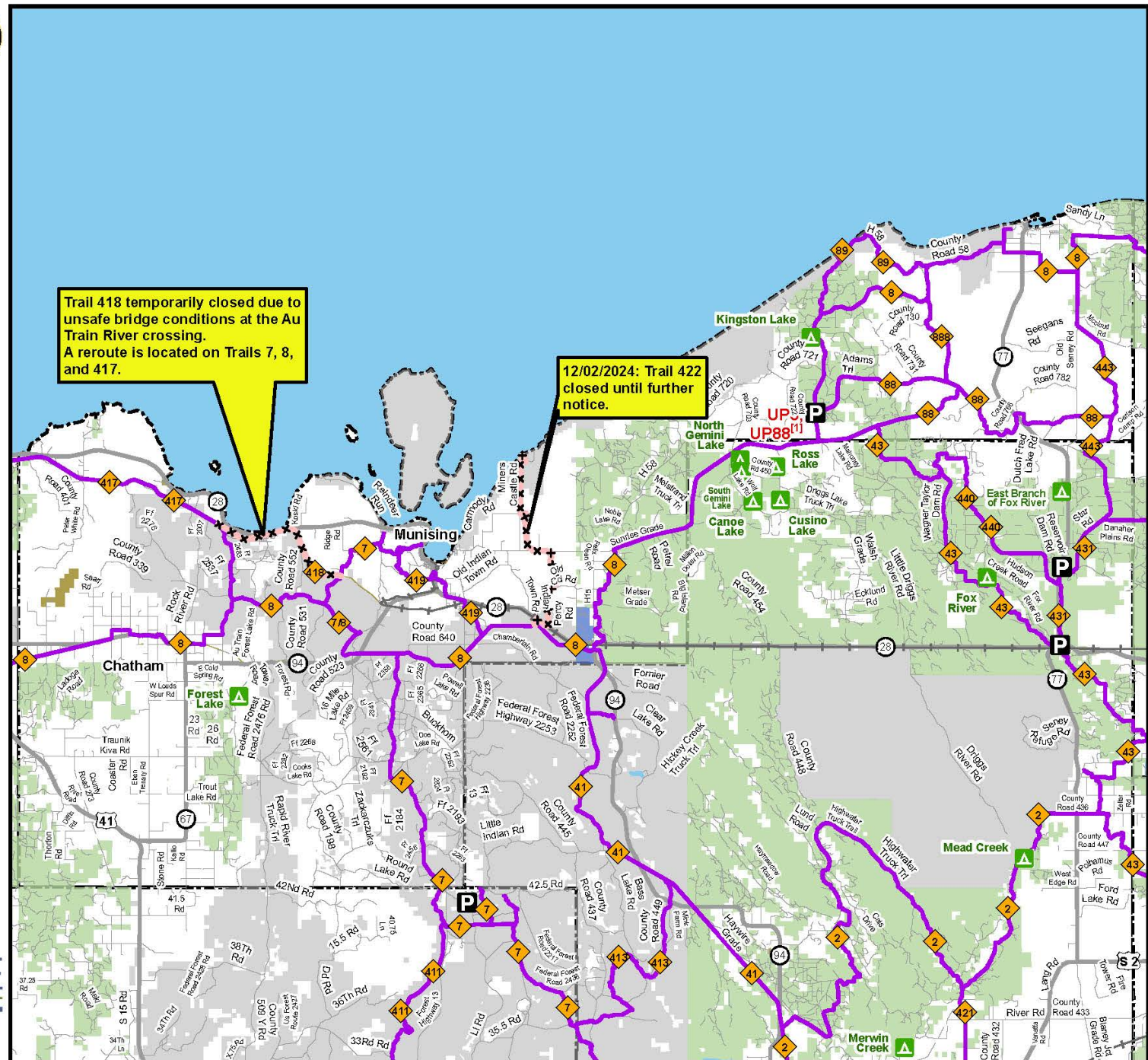
- P** Parking lot
- A** State forest campground
- x** Temporarily closed trail
- Snowmobile trail
- Highway
- Paved road
- Gravel or dirt road
- +** Railroad
- State forest land
- State park
- State wildlife land
- Federal land
- Lakes and rivers

Parking
UP8, UP88⁽¹⁾ Northside of Adams Trail
East of Int with H 58



**RIDE
RIGHT**

Michigan.gov/Snowmobiling



Trail 418 temporarily closed due to unsafe bridge conditions at the Au Train River crossing. A reroute is located on Trails 7, 8, and 417.

12/02/2024: Trail 422 closed until further notice.

5 Recreation Inventory

STANDARDS FOR RECREATION

The National Recreation and Park Association (NRPA) has developed a scale to help measure an existing recreation system's park facilities and provide a baseline standard for equitable park access within a community.

A typical park and recreation system offers one park for every 2,323 residents served, with 10.4 acres of parkland per 1,000 residents. Due to its lower density population, Michigan's Upper Peninsula trends toward having a higher acreage of parkland per resident.

The chart below features a summary of typical acreage and usage of the various park typologies identified by the NRPA.

Park Type	Service Area (radius)	Size (acres)	Acres per 1,000 pop	Uses
Mini-Park	<1/4 mile	1 or less	0.25 to 0.5	Specialized facilities serving concentrated populations.
Neighborhood Park	1/4 to 1/2 mile	15+	1 to 2	Areas for intense recreation activities
Community Park	1 to 2 miles	25+	8 to 10	Areas for diverse recreation activities
Regional Park	1 hr drive	200+	5 to 10	Large natural areas for outdoor recreation

ACCESSIBILITY

Any and all future park development pursuits by the township will strive to achieve universal access for all. Below is a DNR developed Accessibility Grading Rubric to be referenced if and when the township decides to develop or modify its own recreational facilities.

A site visit and accessibility assessment was conducted on October 16, 2025 according to the ADA Checklist* and DNR standards for Accessible Design.

DNR ACCESSIBILITY GRADING SYSTEM

1. None of the facilities meet accessibility guidelines
2. Some of the facilities meet accessibility guidelines
3. Most facilities meet accessibility guidelines
4. The entire park meets accessibility guidelines
5. The entire park was developed using the principles of universal design

* ADACHECKLIST.ORG

Park Inventory

BURT TOWNSHIP OWNED PARKS

AGATE BEACH

DESCRIPTION:

Located on the shores of Lake Superior, Agate Beach covers about 2 acres with sandy beaches, an accessible boardwalk, and its famous wave-polished rocks and agates. An ideal spot for scenic views, walks along the shoreline, sunset watching, and rock hunting.

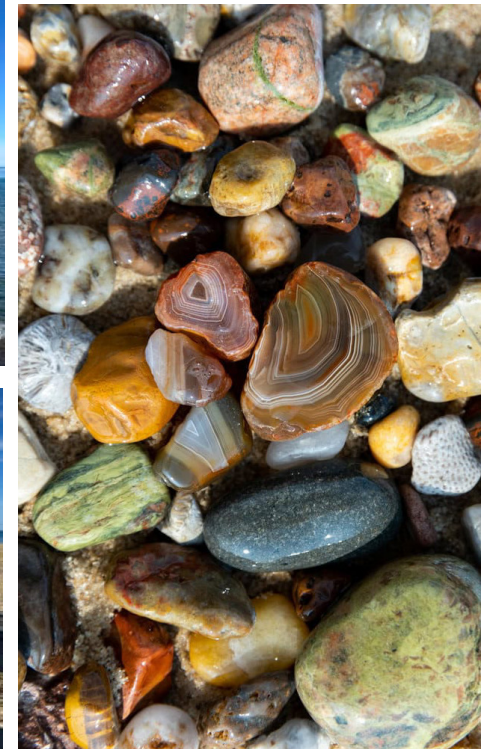
Public parking is available at the boardwalk and the beach can be accessed throughout the Woodland Park Campground.

Possible improvements include restroom facilities, wayfinding and interpretive signage, maintaining and expanding the boardwalk and stairs, mobility mats for beachside accessibility, and monitoring erosion.

GRANT HISTORY:

None

ACCESSIBILITY: 3



BAYSHORE PARK

DESCRIPTION:

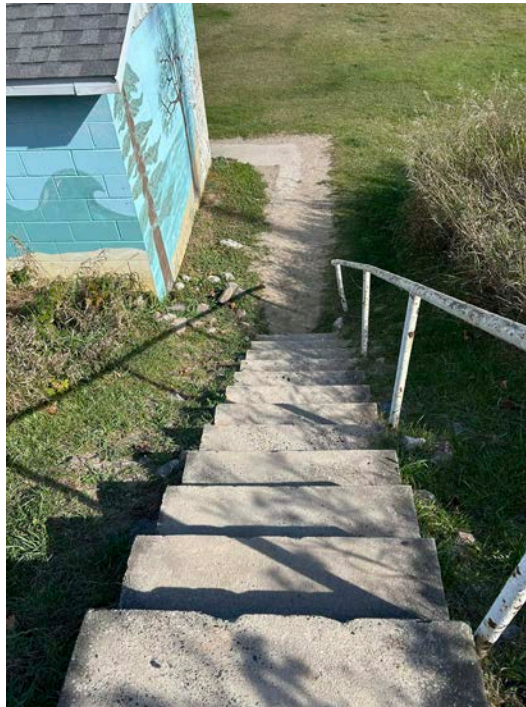
Located in downtown Grand Marais, on the west side of the bay, this park offers white sand beaches suitable for swimming and day-use. The sheltered waters of the bay make swimming conditions calmer here. A covered pavilion is available for gatherings and events with picnic tables. During the summer, a volleyball court is available on the beach. This is also the site of the farmers market in summer and a popular sledding hill in the winter.

Possible improvements include updating the bathhouse/ restrooms to be ADA accessible, safety and accessibility updates to the stairs and paths leading down to the beach, parking accessibility, and making sure the site is preserved from erosion, stormwater, and dust.

GRANT HISTORY:

None

ACCESSIBILITY: 3



DONAHEY WOODS

DESCRIPTION:

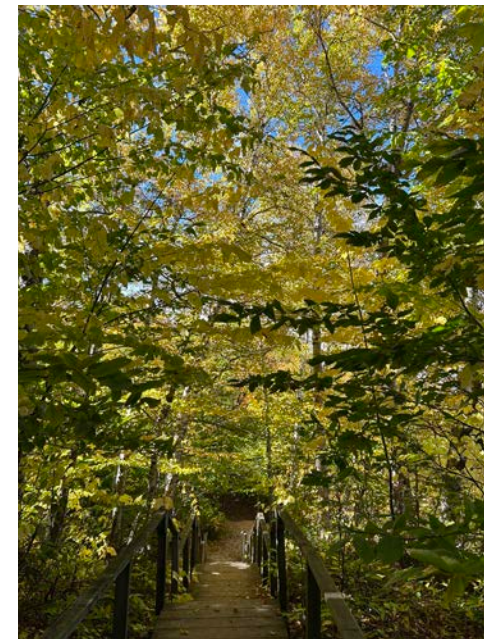
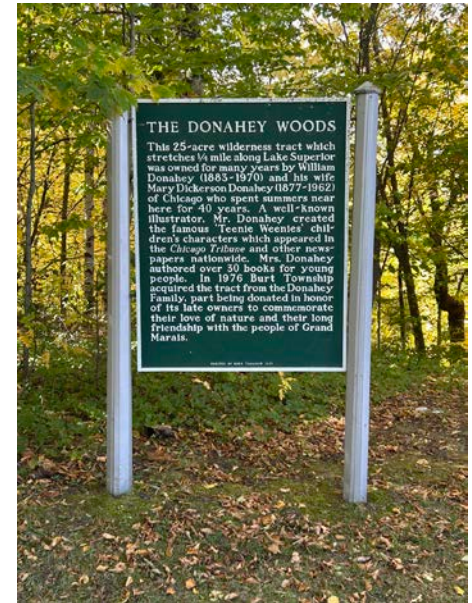
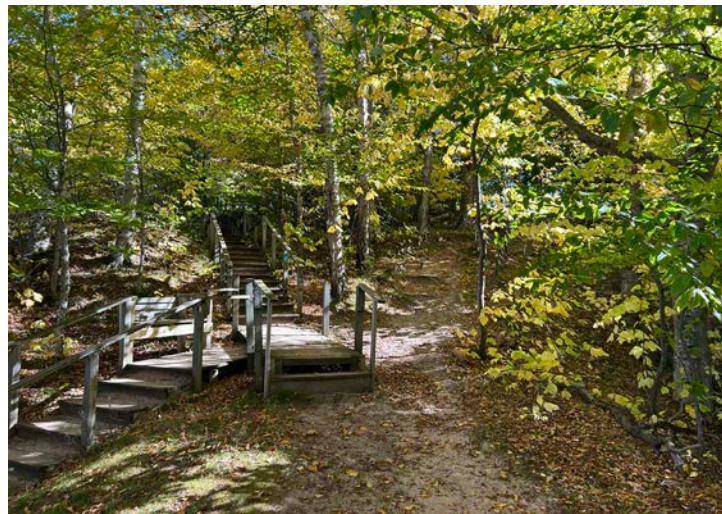
Located near Woodland Campground, Donahey Woods is a small (about 25 acres) lakeshore natural parcel with about a quarter mile of Lake Superior Shoreline. It was purchased in 1976 for conservation from William and Mary Donahey. This site includes informational signage, a hiking trail, and stairs that lead down to the beach. It's an ideal spot for a short hike, birdwatching, and nature viewing.

Possible improvements include a formal and accessible parking area, wayfinding signage, interpretive historical and nature signage, formal trail connections to Woodland Park Campground and Pictured Rocks, and shoreline protection measures against erosion and over-use.

GRANT HISTORY:

1975 Land Acquisition Grant, \$27,210
Used with donations to purchase the Donahey Woods 25 acre tract of land.

ACCESSIBILITY: 1



EDMUND T. WARREN PARK

THE “GREENSPACE”

DESCRIPTION:

Known locally as the Greenspace, Edmund T. Warren Park is a pocket park located in the heart of Grand Marais’ downtown atop Bay Hill. This site features a small gazebo, picnic tables, grilling area, public use trash cans, and a pleasant pathway. This park was created in 2009 by a group of determined residents to serve as a gathering space. Since then it has been used for community and personal events, both planned and unplanned. This greenspace showcases the importance of keeping undeveloped preserved spaces in the community that are open and usable for everyone.

GRANT HISTORY:

None

ACCESSIBILITY: 3



FRANK MEAD COMMUNITY CENTER

DESCRIPTION:

The Community Center is located along Brazel Street near the Township Hall complex in Grand Marais. The Frank Mead Community Center is Burt Township's primary indoor community and recreation facility. Located in the heart of Grand Marais, the center serves as a year-round gathering space for residents, visitors, and local organizations. It provides essential indoor recreation, public meeting space, and event capacity for a township with limited all-season community facilities.

Possible improvements include paving the parking lot to aid in accessibility, community event area expansion, indoor recreation improvements, along with building upgrades and energy improvements.

GRANT HISTORY:

1984 Land and Water Conservation Fund, \$10,500 to develop sports and play fields, basketball court, steps and ramp.

ACCESSIBILITY: 4



WOODLAND PARK CAMPGROUND

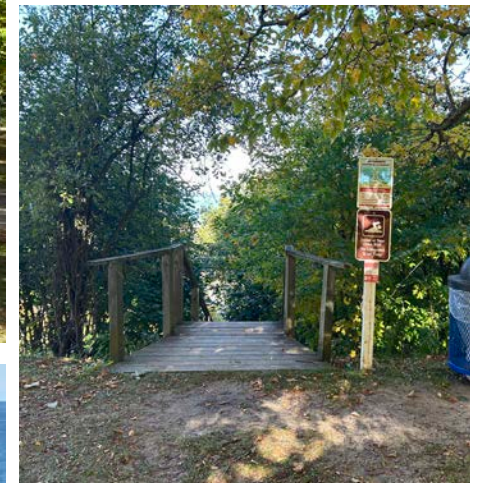
DESCRIPTION:

Woodland Park Campground is Burt Township's flagship outdoor recreation facility and a major visitor destination in Grand Marais. Located on a bluff overlooking Lake Superior, the campground combines stunning lake views with convenient access to the Grand Marais Harbor, downtown businesses, and nearby trails. It serves as a cornerstone of the township's tourism economy and outdoor recreation system, accommodating both short-term and seasonal campers.

GRANT HISTORY:

1968 Land and Water Conservation Fund, \$22,000. This grant was used to develop the park and facilities

ACCESSIBILITY: 3



HARBOR OF REFUGE

DESCRIPTION:

The harbor in Grand Marais, Michigan, commonly referred to as the Harbor of Refuge, is a small but historically and recreationally important port along the southern shore of Lake Superior. It was formally authorized as a “harbor of refuge” under U.S. federal law, meaning it was designated as a safe haven for vessels during storms or emergencies. Preserving this historical safe haven is as important as developing community recreational uses. Coast Guard Point is also located here, featuring picnic amenities.

Possible improvements include a continued infrastructure management plan, sand dredging measures, more interpretive and historical signage, more amenities for picnicking, accessible restrooms and an ADA accessible kayak and canoe launch site.

GRANT HISTORY:
None

ACCESSIBILITY: 2



BURT TOWNSHIP MARINA

DESCRIPTION:

The marina is a key infrastructure node for boating, fishing charters, and Lake Superior access. It enhances the community's year round recreational appeal by offering a waterfront asset that compliments the beaches, trails, and nearby camping facilities. It offers restrooms, fuel services, boat launch, pump-out station, electrical hookups, and picnic areas.

Possible improvements could include ADA launch sites for canoes and kayaks, paved parking lot, wayfinding signage, water wayfinding signage, integration into other recreational assets such as the walking pathway, interpretive and historical signage, and facility improvements and enhancements like dock depth and slip capacity.

GRANT HISTORY:

2016 Natural Resources Trust Fund Development, \$289,400 to expand facilities with a public restroom, shower, and fish cleaning station.

ACCESSIBILITY: 3



This facility, located in the West Bay near Lake Superior, has seven (7) 30-foot transient slips available. The marina has insufficient capacity with very limited dockage spaces. There is currently demand for additional marina capacity and seasonal slips. There are currently no seasonal slips available.

Currently, the greenspace, dockage, and picnic areas are ADA accessible, along with the recent upgrades to the restroom facilities. The parking lot is gravel with 2 ADA accessible parking spots. Paving the lot would allow for more accessibility. There is a high demand for an ADA accessible kayak launch site.

The Marina partners with various local groups and hosts events. Annually, there is the Great Lakes Sea Kayak Symposium, an event focused on promoting community engagement, learning, and adventure on Lake Superior; Splash-In on the Bay, a multi-day seaplane event held in the West Bay; and the Burt Township Marina Youth

Fishing Tournament. The Township is preparing to host these same events annually.

Due to issues with sand accumulation, the Bay needs to be dredged. A typical marina dredging cycle is approximately every 15-20 years. In 2013 the Township executed the Emergency Dredging Project with help from an MDNR Grant-in-Aid Program for \$525,000. This project included approximately 1,200 cubic yards of material along the transient dockage and boat launch. These dredged materials are typically utilized by the Department of Public Works for road maintenance.

Annual Maintenance for the Marina is listed in Appendix D on page 82.

Site Development Plans and more specific information can be found in the Burt Township Marina Master Plan, 2026.

CARPENTER CREEK



DESCRIPTION:

A township owned beach access site located at the mouth of the Carpenter Creek. However, sand erosion and other naturally occurring shifts in landscape make this area difficult to find. No parking lot nor signed public access.

GRANT HISTORY:

1987 Natural Resources Trust Fund, Land Acquisition, \$7,900. For purchasing a one-acre parcel with access to the West Bay with frontage on Carpenter Creek.

ACCESSIBILITY: 1

REGIONAL INVENTORY

Although rural in character, the township is surrounded by an exceptional concentration of public lands that provide year-round outdoor recreation opportunities. These nearby facilities—managed by the National Park Service, U.S. Forest Service, Michigan Department of Natural Resources (MDNR), Alger County, and local governments—form an interconnected regional recreation network. The township’s local parks, harbor facilities, and trail connections serve as gateways to these larger natural areas. This regional context plays a central role in Burt Township’s recreation planning, tourism economy, and community identity.

FACILITY NAME	LOCATION/ DISTANCE	OWNERSHIP	KEY FEATURES	PRIMARY USES
Pictured Rocks National Lakeshore	Adjacent (western township boundary)	National Park Service	Sandstone cliffs, waterfalls, beaches, Grand Sable Dunes, North Country Trail	Hiking, backpacking, camping, kayaking, photography, snowshoeing
Hiawatha National Forest (East Unit)	Extends south and west of township	U.S. Forest Service	Mixed hardwood and pine forest, inland lakes, rustic campgrounds, trail systems	Hiking, snowmobiling, ORV riding, camping, hunting, fishing
Grand Marais Harbor and Marina	Within Township (Lake Superior shoreline)	Burt Township / MDNR / U.S. Army Corps of Engineers	Protected harbor, boat launch, beach, parking, seasonal slips	Boating, fishing, swimming, sightseeing
Kingston Plains Recreation Area	~10 miles southwest	U.S. Forest Service	Open pine plains, historic logging landscape, snowmobile and hiking routes	Hiking, ORV riding, snowmobiling, nature viewing
Muskallonge Lake State Park	~25 miles east	Michigan Department of Natural Resources	159-site campground between Muskallonge Lake and Lake Superior	Camping, swimming, boating, picnicking, fishing
Au Sable Light Station Area	~10 miles west	National Park Service	Historic lighthouse, coastal trail access, interpretive site	Hiking, heritage tourism, photography
Seney National Wildlife Refuge	~30 miles south	U.S. Fish and Wildlife Service	Managed wetlands, auto tour routes, interpretive trails, visitor center	Wildlife viewing, photography, education, cross-country skiing
Alger County Snowmobile and ORV Trails	Multiple access points from Burt Township	Alger County / Local Clubs / MDNR	Groomed winter trails and summer ORV routes connecting to regional networks	Snowmobiling, ORV riding, multi-use trail recreation

6 Comments + Issue Scoping

COMMUNITY INPUT

A parks and recreation survey was launched in June of 2025 through the end of July. Surveys were available online and by print. 232 responses were collected during this time. The feedback garnered was extremely informative and helped in generating recreation values, goals and priority improvements for the community. The quotes within this chapter feature written responses received. They highlight specific reactions community members had including:

SURVEY RESPONSES

“I LOVE THAT THE PARKS ARE CLEAN AND SIMPLE. I LIKE THAT THEY HAVE JUST ENOUGH PICNIC TABLES AND AMENITIES WITHOUT BEING OVERLY BUILT UP OR DETRACTING FROM THE NATURAL BEAUTY..”

-LOCAL RESIDENT

“SO MANY OPTIONS FOR *EVERY* SEASON AND THE PEACE AND TRANQUILITY THAT GOES ALONG WITH IT.”

-LOCAL RESIDENT

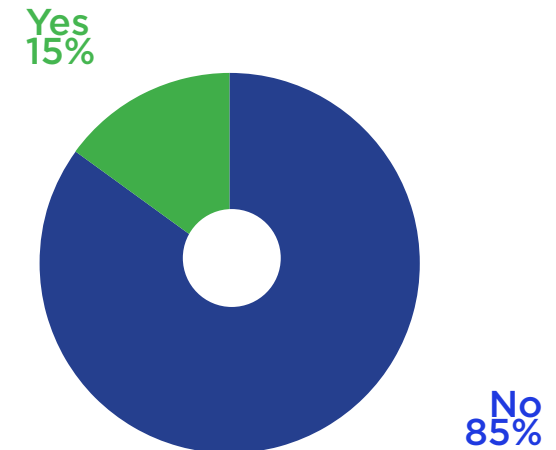
“THE FRIENDLY ATMOSPHERE AND THE KINDNESS OF GRAND MARAIS RESIDENTS. I VALUE THE CLEANLINESS AND VIEW OF THE AREA. I LOVE THE QUIANT GIFT SHOPS AND THE FRIENDLY OWNERS..”

-LOCAL RESIDENT

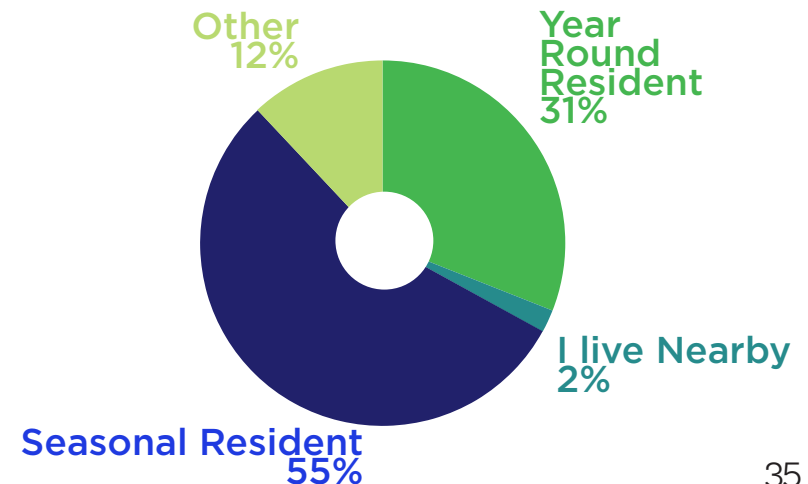
“I THINK PRESERVATION TO TOWNSHIP HISTORY, ESPECIALLY THAT OF THE LOGGING ERA, AND PRESERVATION OF THE INCREDIBLE NATURAL FEATURES OF THE AREA SHOULD BE PARAMOUNT. THERE ARE SO MANY AREAS IN THE STATE THAT ARE LOSING THEIR NATURAL BEAUTY AND THIS AREA IS SO INCREDIBLE AND HAS SUCH AN FASCINATING UNIQUE HISTORY AND THAT WOULD BE A GREAT THING TO FOCUS ON..”

-LOCAL RESIDENT

DO YOU, OR DOES ANYONE IN YOUR HOUSEHOLD, LIVE WITH A DISABILITY?



WHAT BEST DESCRIBES YOUR RESIDENCY?



WHAT RECREATION ACTIVITIES HAVE YOU PARTICIPATED IN WITHIN THE PAST TWO YEARS?

RECREATION ACTIVITIES

Survey participants were asked to list the recreational activities they participated in within the past two years. Top ranked activities included Hiking + Walking, Fishing, Kayaking / Canoeing, Biking, and Swimming. These reflect the diverse activities offered within the township parks. It is also evident the community is eager to utilize any recreational resources and amenities provided.

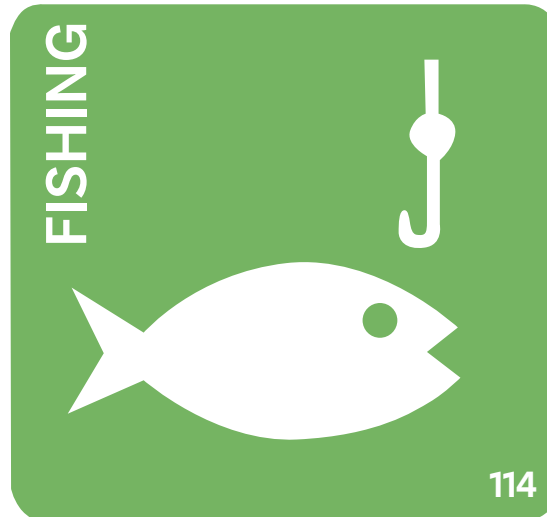
LESS FREQUENT MENTIONS:

17 - BALL SPORTS

10 - ROCKHOUNDING

3 - BOATING

3 - RUNNING



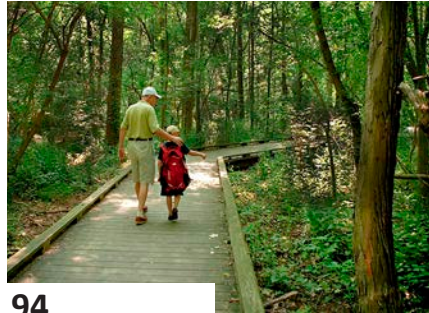
WHAT PROJECT(S) WOULD YOU LIKE TO SEE HAPPEN?

Survey respondents were asked to provide their preferences as to which potential projects they would find the most beneficial to the community.

** Numbers indicate how many survey participants selected each option*



97
ENVIRONMENTAL PROTECTIONS



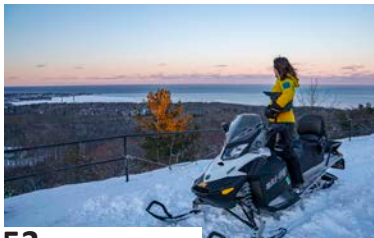
94
ADDITIONAL WALKING TRAILS



71
NATURAL HISTORY SIGNAGE



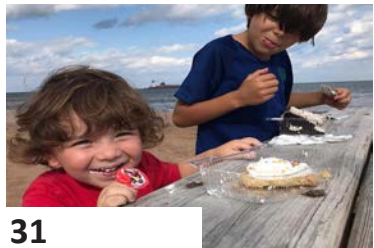
68
EXPANDED WATER ACCESS



53
MORE WINTER RECREATION



47
IMPROVED ACCESSIBILITY



31
MORE PICNIC AREAS

** Top Other Selections:*

28 - More Community Events

16 - New Play Equipment

11 - Restrooms

4 - Fitness Center Improvements

WHAT YOU WOULD LIKE TO SEE CHANGE REGARDING PARKS AND RECREATION WITHIN BURT TOWNSHIP?

“I WOULD LOVE TO SEE MORE EFFORT TAKEN TO PRESERVE BEACH AND NATURAL FEATURE PRESERVATION. IF PLAYGROUND IMPROVEMENTS ARE MADE IT WOULD BE INCREDIBLE TO INCLUDE PLAY STRUCTURES FOR OLDER CHILDREN AND TEENS TOO. THEY ARE ALWAYS OVERLOOKED.”

-LOCAL RESIDENT

CLEAR MARKINGS AND EXPECTATIONS, ADDITIONAL WASTE RECEPTACLES, COMMON SENSE, AND RESTORATIVE JUSTICE-BASED ENFORCEMENT POLICIES.

-LOCAL RESIDENT

MOUNTAIN BIKE TRAILS ARE SORELY NEEDED!

-LOCAL RESIDENT

BETTER ACCESS FOR DISABLED SUCH AS BOARDWALK IN BEACH AREAS AND RESTROOMS.

-LOCAL RESIDENT

MORE CAMPING OPTIONS.

-LOCAL RESIDENT

A SAFE BIKE LANE ON H-58 EAST OF GRAND MARAIS TO SCHOOL FOREST.

-LOCAL RESIDENT

MORE WORK DONE TO THE MARINA AND COAST GUARD PARK TO PROMOTE BOATING ACCESS AND FISHING. LEAVE THE BAY ALONE. THE VIEW IS ALWAYS AMAZING AND PEACEFUL.

-LOCAL RESIDENT



12 **MAINTENANCE FOR ALL PARKS**
“OUR PARKS NEED BETTER SIGNAGE AND MAINTENANCE.”
 -SURVEY PARTICIPANT



7 **IMPROVE PLAYGROUNDS**
“THE PLAYGROUND ON THE BAY COULD USE A LITTLE [TENDER LOVING CARE], NOTHING MAJOR BUT IT COULD BE CUTER!”
 -SURVEY PARTICIPANT



15 **IMPROVED RESTROOMS**
“RESTROOM FACILITIES ARE TERRIBLE IN THE TOWNSHIP. NOT ACCESSIBLE.”
 -SURVEY PARTICIPANT



5
HAVE AN OFF LEASH DOG PARK/TRAIL



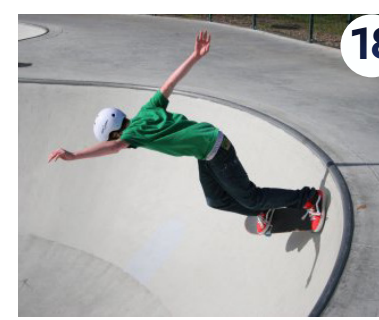
32 **MORE COMMUNITY PROGRAMS/EVENTS**
“ADD SOME KIND OF DOWNHILL RACE INTO TOWN!”
 -SURVEY PARTICIPANT



25 **MORE ACCESSIBLE FOR ALL AGES + ABILITIES**
“BETTER PARKING AND BEACH ACCESSIBILITY IS NEEDED.”
 -SURVEY PARTICIPANT



24
EVENTS FOR KIDS



18 **MORE OPPORTUNITIES FOR TEENS**
“TEENS ARE ALWAYS OVERLOOKED.”
 -SURVEY PARTICIPANT



6 **MORE CAMPING OPTIONS**



8 **HISTORIC PRESERVATION**
“PRESERVATION TO TOWNSHIP HISTORY, ESPECIALLY THAT OF THE LOGGING ERA.. SHOULD BE PARAMOUNT.”
 -SURVEY PARTICIPANT



18 **SAFE BIKE LANES**
“NEED A BIKE LANE ON H58 EAST OF GM TO SCHOOL FOREST.”
 -SURVEY PARTICIPANT

Less frequent mentions:

- More public use trash cans
- Ice Skating rink
- Clear informational and historical signage

- Less motorized sports
- Improved Trail and Wayfinding signage
- Dog poop/ bike repair kiosks
- Dark sky viewing area

- Accessible fishing areas
- Enforce speed limits and noise
- Protect the Bay

***NUMBERS SIGNIFY THE QUANTITY OF SURVEY RESPONDENTS WHO MENTIONED THIS POTENTIAL CHANGE.**

STATEWIDE RECREATION GOALS

STATEWIDE COMPREHENSIVE OUTDOOR RECREATION

Michigan's Statewide Comprehensive Outdoor Recreation Plan (SCORP) serves as the backbone for recreation planning within the state. Every five years new surveys are administered, sites studied and goals and objectives created. Below is a summary of the methodology, goal, and objectives in the plan.

Planning Methodology:

Survey generated and distributed to gather responses from a wide variety of residents and visitors that accurately reflected the general population of the area.

Recreation Participation:

Factors to consider (Income, accessibility, age and health) that limit opportunities for some to recreate.

Motivators:

Mental health and physical benefits are key reasons participants recreate.

Land Use:

Recreation opportunities in and around more urban areas are needed.

Resources:

Participants are more likely to utilize opportunities accessible to a large audience (paved trails, campsites, and other trail types).

Information Seeking Technology:

Welcome and visitor centers are great resources but technological tools could also help mainstream information.

Barriers:

Safety, access, costs associated with, too many crowds, lack of time, or poorly maintained facilities all prevent community members from recreating.

Physical Activity:

Prioritize physical health for all Michigan residents.



**“THE TOTAL
NET ECONOMIC
VALUE OF OUTDOOR
RECREATION IN MICHIGAN
WAS ESTIMATED AT \$165
BILLION.”
-2023-2027
SCORP PLAN**

SCORP GOAL

Ensure that Michigan's outdoor recreation assets are equitably distributed, developed and managed to provide convenient and welcoming access to the outdoors for healthful, outdoor physical activity; and while sustaining our lands, waters and wildlife for current and future generations, drive broad-based economic and quality-of-life benefits to people and communities.

-SCORP 2023-

THE MAIN OBJECTIVES OUTLINED IN THE CURRENT SCORP PLAN:

IMPROVE COLLABORATION:

- Create more opportunities for cross-agency collaboration on recreation
- Explore opportunities for regional analysis and connection to regional planning efforts
- Enhance data access and digital tools for measuring recreation use across management entities

IMPROVE AND EXPAND RECREATIONAL ACCESS:

- Utilize SCORP survey and focus group data to better understand recreation demand
- Communicate the full portfolio of grants and funding available to communities to support outdoor recreation
- Encourage long-term investments that address issues of technology, climate change and resiliency

ENHANCE HEALTH BENEFITS

- Model public-private partnerships and collaborations to activate and steward recreational assets
- Improve interagency collaboration to measure and deliver public health benefits from additional investment in infrastructures and programs supporting recreation

ENHANCE PROSPERITY

- Model and use new data to communicate economic value of outdoor recreation
- Support continued engagement with new users and identify gaps and barriers

COMMUNITY GOALS + OBJECTIVES

Parks and trails proved a connection between natural places and people with the intent of creating meaningful outdoor experiences. The evidence of these experiences is validated in the activities listed in the community survey.

In addition to the value of recreation opportunities and access, there are equally important values regarding exquisite scenery, pristine landscapes, and quiet surroundings. This inherent tension between recreation and preservation helps shape how communities choose to pursue future parks and recreation opportunities.

The boxes to the right feature the 5-year Parks and Recreation Goals for Burt Township. The existing parks are in need of updates and additions. More recreational opportunities for young people was mentioned several times in the survey, as was safe bike lanes.

GOAL 1: ENHANCE ACCESS TO AND CONNECTIVITY BETWEEN RECREATIONAL RESOURCES

Intent: Improve opportunities for residents and visitors to safely and conveniently access the township's lakes, trails, and public lands.

Rationale: Burt Township's geography and proximity to Pictured Rocks National Lakeshore, Hiawatha National Forest, and Lake Superior create unique opportunities for non-motorized and water-based recreation, but many trailheads and access points remain disconnected.

KEY OBJECTIVES:

- Develop and maintain multi-use trail connections linking Grand Marais to surrounding public lands and regional trail systems (e.g., North Country Trail, snowmobile and ORV networks).
- Develop a multi-use trail that connects downtown Grand Marais to the School Forest trail along H-58.
- Improve wayfinding, signage, and parking at major access points.
- Collaborate with the National Park Service, U.S. Forest Service, and Alger County to enhance public access while protecting natural resources.

GOAL 2: PRESERVE AND STEWARD THE TOWNSHIP'S NATURAL AND SCENIC CHARACTER

Intent: Ensure recreation development complements and protects Burt Township's high-quality natural environments, including dunes, forests, wetlands, and shoreline.

Rationale: The township's appeal lies in its unspoiled landscape and natural beauty; however, increased visitation and development can create pressures on sensitive habitats and scenic areas.

KEY OBJECTIVES:

- Prioritize low-impact, sustainable design for new recreation facilities.
- Implement erosion control, habitat protection, and shoreline stabilization measures where necessary.
- Incorporate environmental education and interpretation into park and trail projects to promote stewardship.
- Support long-term conservation partnerships and grant opportunities that align with sustainability goals.
- Dark sky areas to assist with night sky viewing.

GOAL 3: STRENGTHEN COMMUNITY RECREATION OPPORTUNITIES AND YEAR-ROUND ENGAGEMENT

Intent: Provide a diverse mix of recreation options that serve residents of all ages and support the township's quality of life and local economy.

Rationale: As a small, rural, tourism-oriented community, Burt Township benefits from recreation that supports both residents and visitors throughout all seasons.

KEY OBJECTIVES:

- Maintain and improve existing facilities such as Woodland Park Campground, the marina, and community parks.
- Expand four-season recreation opportunities (e.g., snowshoeing, cross-country skiing, paddling, and hiking).
- Encourage local events, volunteer initiatives, and partnerships that celebrate outdoor recreation and community pride.

8 Action Plan

Burt Township does not have a formal parks and recreation department but is home to a diverse landscape with a multitude of recreation opportunities. This 5-Year Recreation Plan serves as the first step toward applying for and obtaining DNR grant funds for specific projects that maintain and enhance the township's recreational opportunities.

This Action Plan is an expansive list of potential partnerships, acquisitions and projects the township could apply for funding for in the future. By no means does this list of projects need to be completed within a 5 or even 20 year window. It simply reflects community generated and commission approved priority projects. Each project is a step in the right direction to help achieve the goals featured in the previous chapter.

The Township will continue to revisit its recreation plan within the future and amend this list as needed. The final pages of this chapter feature changes proposed within the survey responses. Many of these proposed changes are reflected within the project lists on the following pages.



GOAL #1 | Enhance Access and Connectivity

Ensuring safe amenity access for everyone

PRIORITIZE ACCESS FOR EVERYONE

All township park development projects to meet or exceed 2010 ADA building standards and shall follow the American Barriers Act Standards for Outdoor Developed Areas. Upgrade parking and accessibility pathways to parks and areas of interest. Add wayfinding signage, maps, and markers for improved navigation.

ENCOURAGE PARK UPKEEP BY CITIZENS

Work with local schools to develop a clear and concise messaging campaign focused on leave-no-trace principles.

Foster a sense of citizens' ownership of parks by promoting volunteerism.

Make sure public use trash cans and pet waste stations are easily accessed.

PRIORITIZE PARK IMPROVEMENTS

Improve parks and amenities by replacing or repairing structures, facilities, and/or equipment, either by park last updated or the most popular destination for the community.

UPGRADES TO PUBLIC FACILITIES

Upgrade local parks and picnic areas with accessible rest rooms, drinking fountains, and changing tables.

NON-MOTORIZED TRAIL CONNECTIONS

Determine priority trail links and access points for non-motorized trails and develop necessary connections and trailheads. Prioritize safe bike lane infrastructure along popular routes, such as along H-58.

GOAL #2 | Preserve Natural Character

Keep it simple, keep it scenic

ENVIRONMENTAL PROTECTIONS FOR THE BAY AND SHORELINE

Prioritize protecting the shoreline and work with Army Corp of Engineers for a sustainable solution to sand build up in the Bay.

SUPPORT NATURAL RESOURCE RESTORATION EFFORTS

Continue to support organization and volunteer efforts to treat invasive species, stabilize shorelines, develop more sustainable trails and prevent other forms of degradation.

ENHANCE CAMPING FACILITIES

More camping facilities could be added to a popular destination. Consider creating different sorts of camping experiences, ie: yurts, cabins, glamping, etc.

Add accessible camping areas with paved walkways, accessible picnic tables, and accessible nature trails.

INTERPRETIVE AND HISTORICAL SIGNAGE

Historical signage plays a vital role in connecting recreation, tourism, and community identity. In places like Burt Township and Grand Marais—where natural beauty, maritime heritage, and small-town character intersect—interpretive signs do more than convey facts. They transform recreation spaces into storytelling landscapes, deepening the visitor experience and strengthening local pride.

GOAL #3 | Strengthen Engagement

Recreational programming and events for all ages and all seasons

LOCAL ENGAGEMENT

Collaborate with intergenerational partners to create unique and inclusive year-round programming.

DEVELOP COMMUNITY-ORIENTED PROGRAMMING

A robust all-season community event calendar.

Work with community groups, schools, and the Community Center to establish pertinent and desired activities, events, and programming that engages and excites people of all ages and abilities.

Consider moving the exercise room to a more accessible space.

INCREASED WAYFINDING + CONNECTIONS

Wayfinding signs increase recreational site, amenities, and safety information for visitors and residents. Connecting trails with segments could create integration with other assets and the downtown.

PRIORITY PROJECTS

These priority projects were discussed and chosen by the Planning Commission, reflected by choices made by the community through the survey.

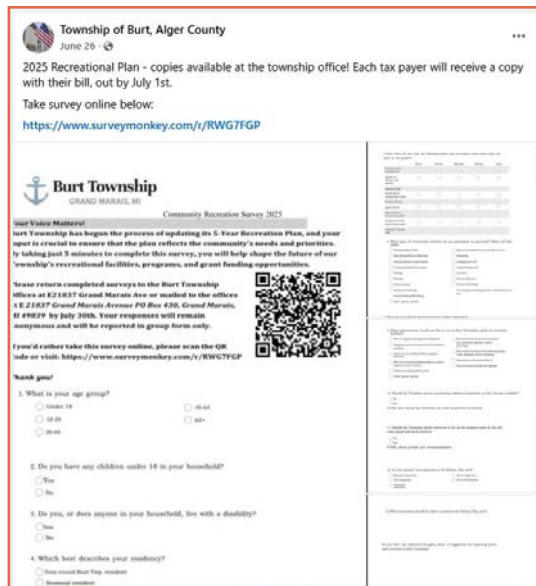
- Sand dredging and long term solution to sand issues in Habor of Refuge
- Bay Shore Park development including public bathrooms
- Multi-purpose trails along H-58 east and west
- Pursue property purchases for public recreation and access
- Accessible Fitness Room (Community Center)
- Marina parking lot drainage and paving
- Kayak/ Canoe launch at Old Coast Guard Point

A Appendix

PUBLIC NOTICES + SURVEY RESULTS

Survey Responses: The community survey for the 2025 Recreation Plan update was made available online. Copies were also mailed to residents with their residential tax bills, mailed out July 1st. Notices were posted on the township website, CUPPAD's website, the township's Facebook page, and was printed in The Grand Marais Pilot & Pictured Rocks Review on July 11, 2025.

Online and paper surveys were returned before August 31st, overall 232 responses were captured and synthesized into this plan.



Township of Burt, Alger County
June 26 · 🌐

2025 Recreational Plan - copies available at the township office! Each tax payer will receive a copy with their bill, out by July 1st.

Take survey online below:
<https://www.surveymonkey.com/r/RWG7FGP>

Burt Township
GRAND MARAIS, MI

Community Recreation Survey 2025

Your Voice Matters!
Burt Township has begun the process of updating its 5-Year Recreation Plan, and your input is crucial to ensure that the plan reflects the community's needs and priorities. It takes just 5 minutes to complete this survey, you will help shape the future of our township's recreational facilities, programs, and grant funding opportunities.

Please return completed surveys to the Burt Township Office at 821837 Grand Marais Ave or mailed to the offices at 821837 Grand Marais Avenue PO Box 436, Grand Marais, MI 49830 by July 30th. Your responses will remain anonymous and will be reported in group form only.

If you'd rather take this survey online, please scan the QR code or visit: <https://www.surveymonkey.com/r/RWG7FGP>

Thank you!

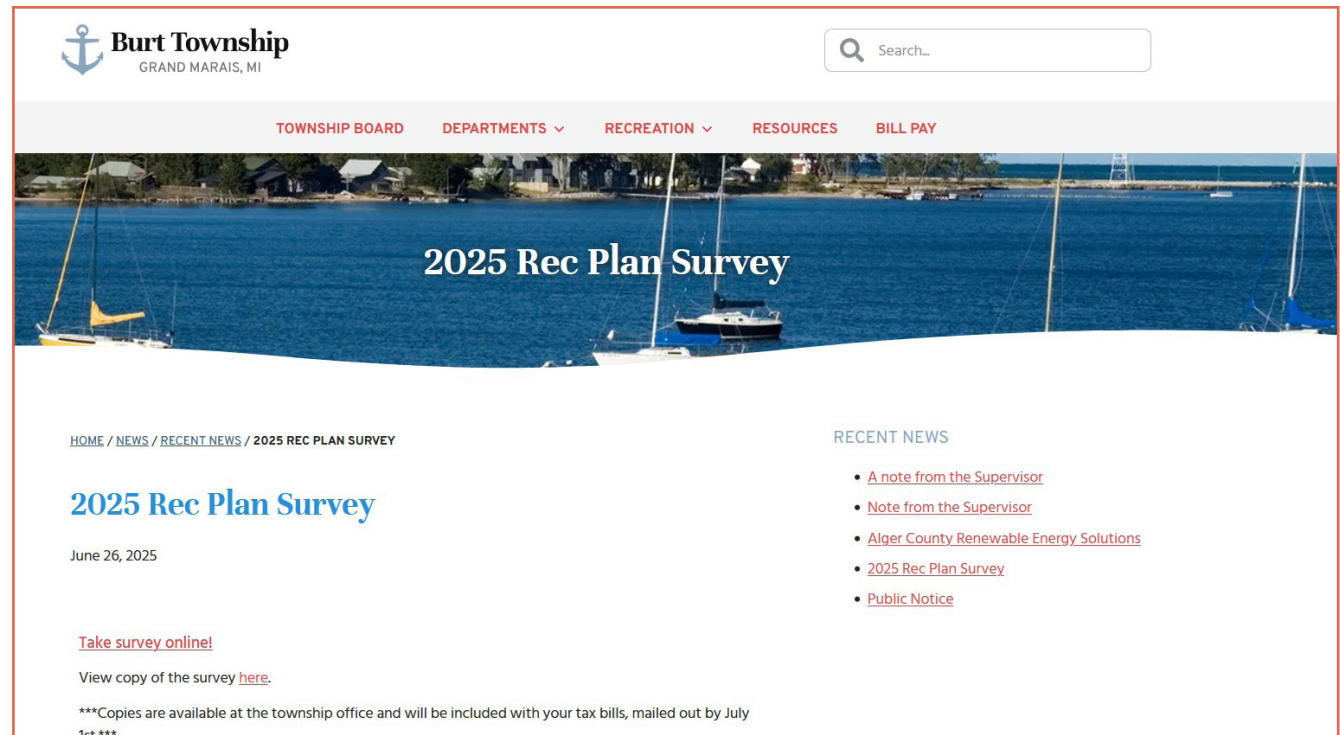
1. What is your age group?
☐ Under 18 ☐ 18-24 ☐ 25-44 ☐ 45-64 ☐ 65+

2. Do you have any children under 18 in your household?
☐ Yes ☐ No

3. Do you, or does anyone in your household, live with a disability?
☐ Yes ☐ No

4. Which best describes your residency?
☐ I own this property ☐ I rent this property ☐ I am a seasonal resident

www.facebook.com/p/Township-of-Burt-Alger-County-100064899036140/



Burt Township
GRAND MARAIS, MI

Search...

TOWNSHIP BOARD DEPARTMENTS RECREATION RESOURCES BILL PAY

2025 Rec Plan Survey

HOME / NEWS / RECENT NEWS / 2025 REC PLAN SURVEY

2025 Rec Plan Survey

June 26, 2025

[Take survey online!](#)

View copy of the survey [here](#).

Copies are available at the township office and will be included with your tax bills, mailed out by July 1st.

RECENT NEWS

- [A note from the Supervisor](#)
- [Note from the Supervisor](#)
- [Alger County Renewable Energy Solutions](#)
- [2025 Rec Plan Survey](#)
- [Public Notice](#)

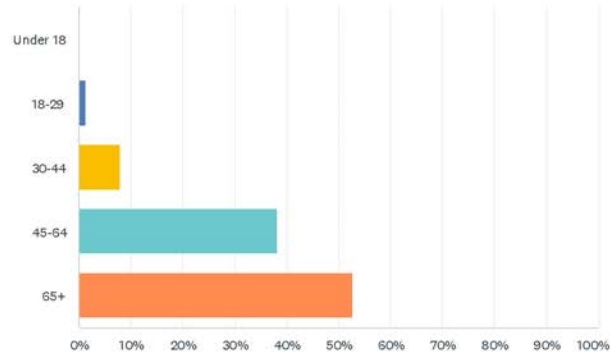
www.burttownship.com/news/2025-rec-plan-survey/

Online Survey with summaried responses:

Burt Township Recreation Survey 2025

Q1 What is your age group?

Answered: 230 Skipped: 1

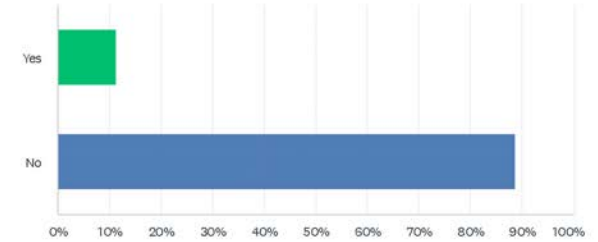


ANSWER CHOICES	RESPONSES	
Under 18	0.00%	0
18-29	1.30%	3
30-44	7.83%	18
45-64	38.26%	88
65+	52.61%	121
TOTAL		230

Burt Township Recreation Survey 2025

Q2 Do you have any children under 18 in your household?

Answered: 228 Skipped: 3

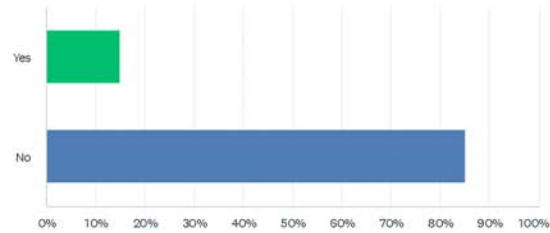


ANSWER CHOICES	RESPONSES	
Yes	11.40%	26
No	88.60%	202
TOTAL		228

Burt Township Recreation Survey 2025

Q3 Do you, or does anyone in your household, live with a disability?

Answered: 229 Skipped: 2

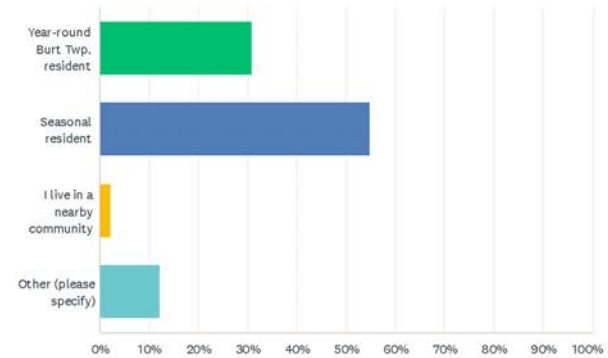


ANSWER CHOICES	RESPONSES
Yes	14.85% 34
No	85.15% 195
TOTAL	229

Burt Township Recreation Survey 2025

Q4 Which best describes your residency?

Answered: 230 Skipped: 1



ANSWER CHOICES	RESPONSES
Year-round Burt Twp. resident	30.87% 71
Seasonal resident	54.78% 126
I live in a nearby community	2.17% 5
Other (please specify)	12.17% 28
TOTAL	230

#	OTHER (PLEASE SPECIFY)	DATE
1	No shelter on property, we live out of state	9/9/2025 4:08 PM
2	Weekend vacations	9/2/2025 8:50 PM
3	Vacation cabin	9/1/2025 3:04 PM
4	Property owner	8/27/2025 11:56 AM
5	Own vacation property	8/26/2025 3:01 PM
6	Property owner	8/26/2025 12:48 PM
7	Hunting cabin	8/26/2025 12:44 PM
8	Property Owner	8/26/2025 12:08 PM
9	Own vacation property	8/25/2025 3:59 PM
10	Hunting/ fishing cabin for vacation	8/25/2025 3:46 PM
11	Frequent visitor, part owner of a short term rental cottage. My family is a 3rd generation GM resident.	8/25/2025 3:33 PM

Burt Township Recreation Survey 2025

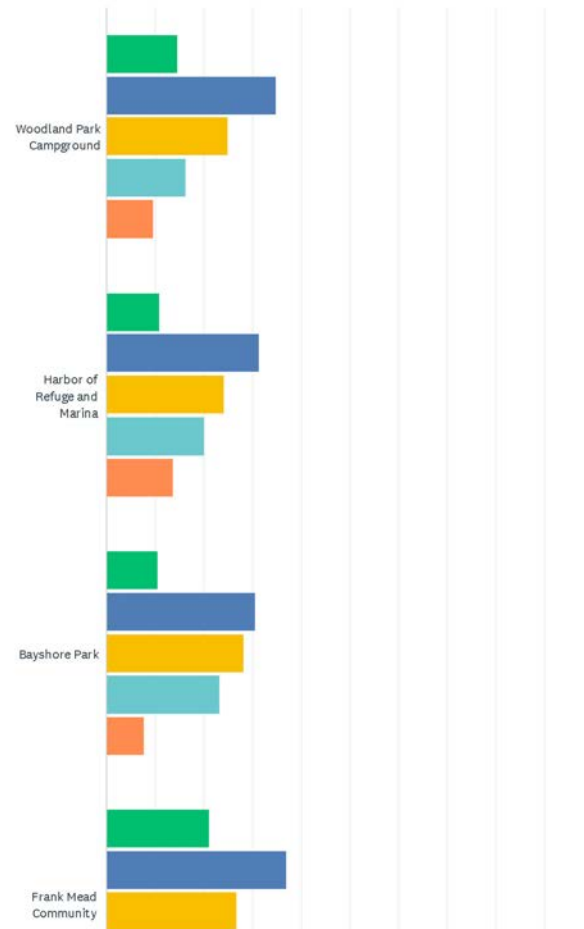
12	co-owner of property and visit frequently	8/25/2025 3:04 PM
13	We own property in Burt Township	8/25/2025 2:06 PM
14	My house is an Air BnB I'm there two months of a year, I visit in spring and fall/ the off seasons	8/25/2025 1:50 PM
15	I live in nw lower mi	8/12/2025 1:05 PM
16	Camp at woodland park every year	8/12/2025 8:40 AM
17	Part time all seasons	7/31/2025 12:44 PM
18	I live in the lower peninsula	7/30/2025 3:04 PM
19	family has a cottage for +3 generations. Our portion of the family visits about 2 weeks per year.	7/30/2025 2:28 AM
20	Rental Property and Personal Use	7/15/2025 3:34 PM
21	Own, but only visit for vacation right now	7/13/2025 7:24 PM
22	occasional out of state visitor	7/7/2025 9:54 AM
23	Year round cabin, secondary home	7/5/2025 8:38 AM
24	Pinckney	7/4/2025 9:12 AM
25	Property owner	7/4/2025 7:39 AM
26	Come to GM about a week / month year round	7/3/2025 2:13 PM
27	Woodland Park Campground season camper	7/1/2025 12:44 AM
28	Half of our household is year round and have is seasonal	6/26/2025 11:26 AM

5 / 49

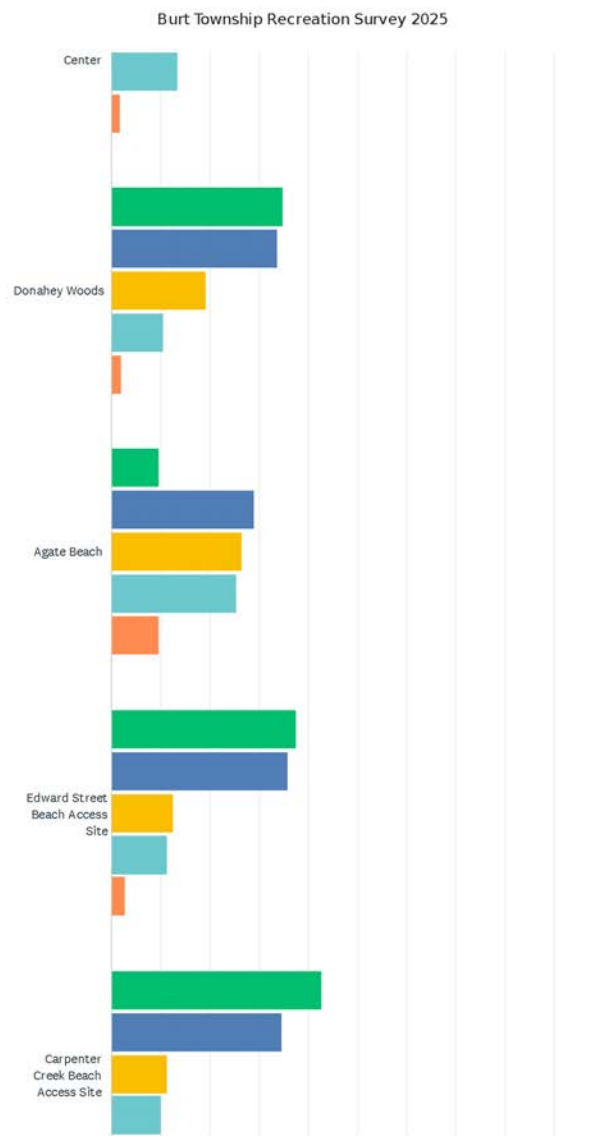
Burt Township Recreation Survey 2025

Q5 How often do you visit the following parks and recreation areas when they are open to the public?

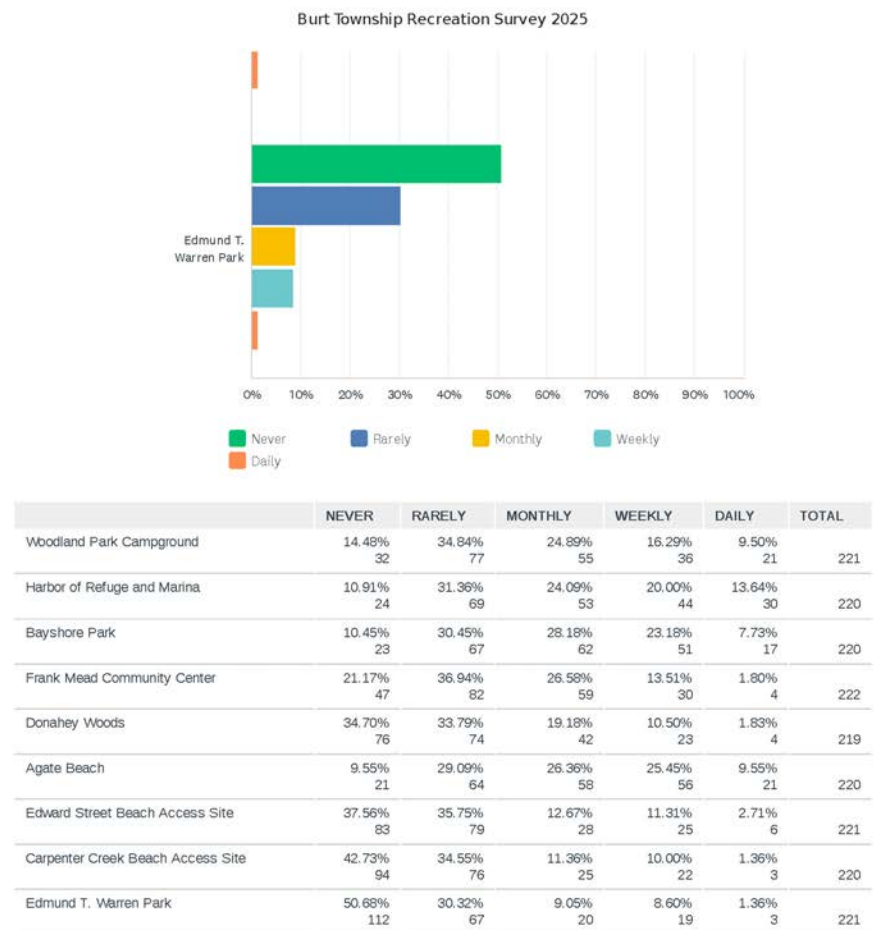
Answered: 223 Skipped: 8



6 / 49



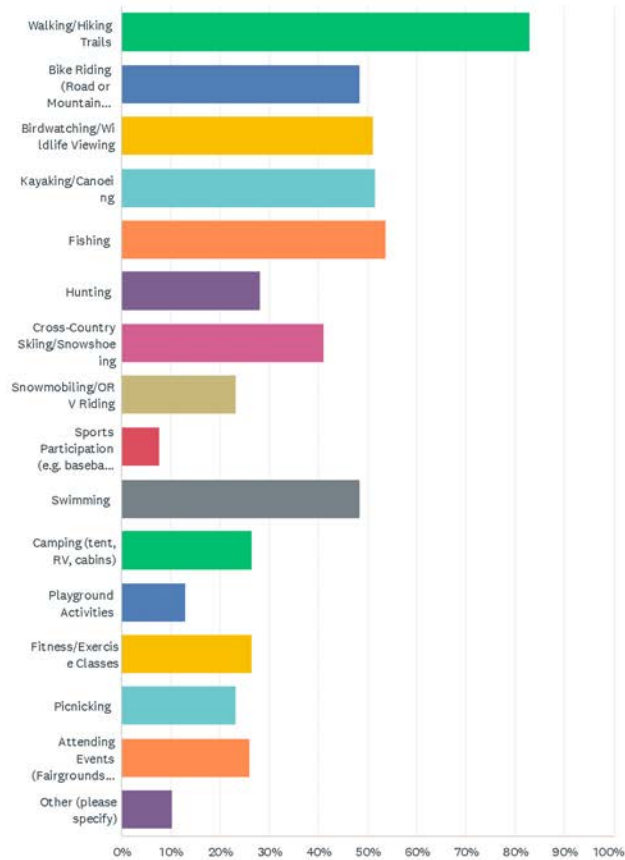
7 / 49



8 / 49

Q6 What types of recreational activities do you participate in, generally?
(Select all that apply)

Answered: 223 Skipped: 8



9 / 49

ANSWER CHOICES	RESPONSES	
Walking/Hiking Trails	82.96%	185
Bike Riding (Road or Mountain Biking)	48.43%	108
Birdwatching/Wildlife Viewing	51.12%	114
Kayaking/Canoeing	51.57%	115
Fishing	53.81%	120
Hunting	28.25%	63
Cross-Country Skiing/Snowshoeing	41.26%	92
Snowmobiling/ORV Riding	23.32%	52
Sports Participation (e.g. baseball, soccer)	7.62%	17
Swimming	48.43%	108
Camping (tent, RV, cabins)	26.46%	59
Playground Activities	13.00%	29
Fitness/Exercise Classes	26.46%	59
Picnicking	23.32%	52
Attending Events (Fairgrounds, Family Reunions, etc.)	26.01%	58
Other (please specify)	10.31%	23
Total Respondents: 223		

#	OTHER (PLEASE SPECIFY)	DATE
1	Bear hunting with hounds	8/27/2025 11:50 AM
2	Local club activities	8/26/2025 2:38 PM
3	Music, dog sled races, blueberry picking	8/26/2025 1:07 PM
4	Rock collecting, Agate collecting	8/26/2025 12:54 PM
5	walks around town	8/25/2025 4:03 PM
6	Rock hunting	8/25/2025 3:33 PM
7	Boating	8/25/2025 3:04 PM
8	Horseshoes, pickle ball	8/25/2025 2:20 PM
9	Beachcombing, Farmers Market	8/25/2025 2:06 PM
10	Rockhounding, collecting driftwood	8/25/2025 1:13 PM
11	Trail Running	8/20/2025 11:15 AM
12	Cruising	8/17/2025 1:49 PM
13	Rock hunting	7/30/2025 7:44 PM
14	Plan to add Canoe, kayak, fitness class in future	7/30/2025 9:10 AM
15	rock hunting, general beach exploration	7/30/2025 2:28 AM
16	ORV riding	7/24/2025 5:44 PM

10 / 49

Burt Township Recreation Survey 2025

17	Just staring at the lake and decompressing	7/15/2025 6:41 PM
18	Gardening, landscaping	7/10/2025 2:54 PM
19	Sailing	7/6/2025 8:27 PM
20	Disabled	7/4/2025 9:12 AM
21	Boating	7/3/2025 6:23 PM
22	Pickleball, ice skating, kite flying	6/26/2025 11:26 AM
23	outdoor art and music	6/26/2025 11:10 AM

Burt Township Recreation Survey 2025

Q7 What do you VALUE about recreation in Burt Township?

Answered: 190 Skipped: 41

#	RESPONSES	DATE
1	Easy access to the beaches. Great campground.	9/13/2025 7:03 AM
2	We value the nature, peace and quiet. We love the beaches, hiking trails and play ground for the kids	9/9/2025 4:08 PM
3	We love the parks and the beaches. We enjoy hiking and we love to snowmobile and ride sxcs.	9/8/2025 7:50 AM
4	Small local buisnessses and outdoors	9/3/2025 1:32 PM
5	Nature	9/2/2025 8:50 PM
6	Dog friendly! Peace, quiet, ease of access.	8/30/2025 1:52 AM
7	The woods	8/28/2025 8:03 PM
8	Nature and accessibility to it.	8/27/2025 12:11 PM
9	The friendly atmosphere and the kindness of GM residents. I value the cleanliness and view of the area. I love the quaint gift shops and the friendly owners.	8/27/2025 12:07 PM
10	Location	8/27/2025 11:59 AM
11	The variety.	8/27/2025 11:56 AM
12	Good hunting and fishing.	8/27/2025 11:50 AM
13	The abundance of activities available.	8/27/2025 11:48 AM
14	Fishing, hiking, trails.	8/27/2025 11:43 AM
15	Peace and quiet. We like the School Forest because we can take our dogs.	8/27/2025 11:41 AM
16	Clean facilities, well maintained, accessibility.	8/27/2025 11:37 AM
17	The Bay!!	8/27/2025 11:36 AM
18	Close access and the quiet small undisturbed atmosphere.	8/27/2025 11:33 AM
19	Agate Beach, Harbor Beach	8/27/2025 11:20 AM
20	Access to wilderness and Lake Superior Shoreline.	8/26/2025 3:05 PM
21	Trail system and the Marina.	8/26/2025 3:01 PM
22	Great for grand kids and great grand kids!	8/26/2025 2:58 PM
23	Most is free to the public and family that visits.	8/26/2025 2:56 PM
24	Clean air and water. Quiet.	8/26/2025 2:54 PM
25	The beaches.	8/26/2025 2:49 PM
26	I value the natural resources and peaceful quiet of this special place that I've made my home. I do not value noisy recreation.	8/26/2025 2:47 PM
27	Not many people	8/26/2025 2:42 PM
28	I value the many opportunities and varieties of recreation in our township.	8/26/2025 2:41 PM
29	Free and easy beach access.	8/26/2025 2:38 PM
30	The Harbor.	8/26/2025 2:36 PM
31	Four seasons of fun!! Fishing, hunting, boating, swimming, snowmobiling, ORVs, sunsets.	8/26/2025 2:32 PM

Burt Township Recreation Survey 2025

32	Lake Superior, nature in abundance, clean air quality- good oxygen except when people burn garbage.	8/26/2025 2:29 PM
33	We love the trails and renting the side by sides. My kids use the basketball courts just about every day when the weather is nice.	8/26/2025 2:24 PM
34	Sufficient recreational opportunities.	8/26/2025 2:17 PM
35	Beach access.	8/26/2025 2:13 PM
36	Beauty and quiet.	8/26/2025 2:11 PM
37	Peace and quiet	8/26/2025 2:10 PM
38	Beauty of area.	8/26/2025 2:08 PM
39	Easy to access and nearby.	8/26/2025 2:05 PM
40	Family oriented.	8/26/2025 2:02 PM
41	Beautiful beach access, well maintained parks and campgrounds.	8/26/2025 1:59 PM
42	Quiet walking, birding, biking, hiking - love the open undeveloped areas.	8/26/2025 1:54 PM
43	Quiet beaches, clean water of Lake Superior, quiet woods, dark skies.	8/26/2025 1:42 PM
44	Lake Superior and the clean beaches. Not crowded.	8/26/2025 1:37 PM
45	The number of trails to hike.	8/26/2025 1:34 PM
46	Some because its good for tourists. The dog park is great.	8/26/2025 1:30 PM
47	easy access, free, not "improved" but more natural.	8/26/2025 1:27 PM
48	Nature, scenery, small town atmosphere. The people.	8/26/2025 1:24 PM
49	The diversity of options available.	8/26/2025 1:22 PM
50	I love it all so far, too soon to comment more. I am new to the area.	8/26/2025 1:17 PM
51	That mostly it doesn't interfere with the slower pace of life and doesn't overlap into the residential areas. Love the bay swimming access and agate beach access.	8/26/2025 1:14 PM
52	Peace and quiet, walks on the beach and woods, canoeing.	8/26/2025 1:10 PM
53	Trails	8/26/2025 1:08 PM
54	The solace and quiet	8/26/2025 1:07 PM
55	Beach access sites, campground, love the cool driftwood structure built on the beach at the campground, I hope you don't remove it.	8/26/2025 12:58 PM
56	Lake Access	8/26/2025 12:54 PM
57	That the land is owned by the American Citizens, the interests are to preserve the heritage of this land.	8/26/2025 12:44 PM
58	Beaches and parks.	8/26/2025 12:39 PM
59	Nature in abundance and freedom to roam in the woods, then come to town for food and drinks.	8/26/2025 12:13 PM
60	Quiet. But recreational vehicles have taken that away.	8/26/2025 12:03 PM
61	Nature, pictured rocks national lakeshore, lake superior, forests, trails. I really like that the bay isn't filled with noisy vehicles (wave runners, etc)	8/25/2025 4:12 PM
62	Access to the beach and the bay.	8/25/2025 4:00 PM
63	Snowmobiling	8/25/2025 3:59 PM
64	Abundance and availability.	8/25/2025 3:58 PM
65	Natural beauty.	8/25/2025 3:53 PM

Burt Township Recreation Survey 2025

66	Fishing	8/25/2025 3:52 PM
67	The diverse amount year round. Snow in the winter and favorable weather in the summer and fall for recreation.	8/25/2025 3:50 PM
68	I value the consistency and peacefulness.	8/25/2025 3:43 PM
69	The natural beauty of the area.	8/25/2025 3:40 PM
70	Wildlife, fishing, troutfishing, hunting on undeveloped land	8/25/2025 3:37 PM
71	Quiet shoreline walks.	8/25/2025 3:33 PM
72	The outdoor recreation is great, hiking, biking, kayaking.	8/25/2025 3:30 PM
73	Nature	8/25/2025 3:28 PM
74	Town beach access.	8/25/2025 3:25 PM
75	The natural setting is preserved and has not been over-developed thus far, not littered with signage.	8/25/2025 3:14 PM
76	Woodland Park	8/25/2025 3:08 PM
77	The beauty.	8/25/2025 3:04 PM
78	Recreation opportunities are good.	8/25/2025 3:01 PM
79	Beautiful, expensive marina, we cannot access Ellen St Beach.	8/25/2025 2:57 PM
80	The many opportunities.	8/25/2025 2:51 PM
81	Not over-used and crowded.	8/25/2025 2:49 PM
82	Fresh air, nature, sunsets, fishing, boating, quiet, lake superior	8/25/2025 2:47 PM
83	Beach access	8/25/2025 2:44 PM
84	Nature in abundance.	8/25/2025 2:42 PM
85	Solitude.	8/25/2025 2:39 PM
86	Seclusion	8/25/2025 2:36 PM
87	Easy beach access	8/25/2025 2:33 PM
88	Fresh air, quietness, peacefulness, courtesy of residents	8/25/2025 2:31 PM
89	So many opportunities and fantastic weather and resources.	8/25/2025 2:20 PM
90	The water and surrounding countryside.	8/25/2025 2:06 PM
91	Ease of access to current areas.	8/25/2025 2:02 PM
92	Keeping the areas clean.	8/25/2025 1:56 PM
93	small town location	8/25/2025 1:50 PM
94	It's not crowded, its less commercial and mostly free.	8/25/2025 1:48 PM
95	Free, unfettered access, clean pristine conditions.	8/25/2025 1:31 PM
96	We have diverse recreational opportunities for summer and winter. Maintain what we already have available.	8/25/2025 1:22 PM
97	The fact that it is available.	8/25/2025 1:19 PM
98	The diversity of resources	8/25/2025 1:13 PM
99	Clean, ease of access	8/25/2025 1:11 PM
100	The accessibility (for me as an able-bodied person) and the foresight that Burt Township has had to make sure access to the harbor and Lake Superior is available to non-waterfront property owners. The clean water and healthy dune system, habitat for birds and infrastructure	8/20/2025 11:15 AM

Burt Township Recreation Survey 2025

that the Township has provided (dog waste stations readily available and regularly maintained for example) to make it easy for visitors to keep these places clean.

101	Natural, quiet locations	8/18/2025 8:40 AM
102	Remoteness, tranquility	8/17/2025 1:49 PM
103	It's beauty	8/14/2025 2:49 PM
104	Staying active, community events.	8/14/2025 9:46 AM
105	The snowmobile trails are top notch	8/12/2025 1:05 PM
106	Lake access, trails, many campgrounds	8/12/2025 8:40 AM
107	Endless opportunities	8/6/2025 7:03 AM
108	Beautiful scenery	8/5/2025 4:16 PM
109	It remains pristine and untouched.	7/31/2025 2:28 PM
110	Access to beach and hiking/biking trails, close proximity to well maintained facilities, silent sports, nature in abundance	7/31/2025 12:44 PM
111	Nature. Ease. Availability	7/30/2025 7:44 PM
112	Nature	7/30/2025 3:04 PM
113	That its all available and accessible and that there are areas that are less known and overly crowded during the busy season.	7/30/2025 9:23 AM
114	Outside activities based on natural surroundings.	7/30/2025 9:10 AM
115	Clean beautiful natural beaches.	7/30/2025 2:28 AM
116	Access to nature like various parks and water access points, Community in general.	7/30/2025 1:45 AM
117	Provides access to the all the things that make Grand Marais beautiful!	7/29/2025 7:04 AM
118	Orv trails Farmers market	7/28/2025 7:43 PM
119	Access to beautiful areas	7/28/2025 1:18 PM
120	So many options for EVERY season and the peace and tranquility that goes along with it.	7/24/2025 5:44 PM
121	Wilderness	7/23/2025 6:19 PM
122	The access and beauty.	7/23/2025 11:01 AM
123	The town offers a lot of quiet and scenic opportunities. I value these.	7/22/2025 8:37 AM
124	The welcoming businesses and people. Very accessible and very nice trails , scenery and the small town feel.	7/21/2025 6:23 PM
125	Clean,, love that there are garbage cans in the parking areas or start/end of trail.	7/21/2025 5:37 PM
126	The availability, outside of the National Park system.	7/21/2025 6:24 AM
127	I value the forests, the wildlife, and the off grid experience. I enjoy the peace and quiet that Burt Township offers me.	7/20/2025 10:07 PM
128	Peaceful	7/20/2025 3:40 PM
129	Pristine water and endless trails through the woodlands.	7/18/2025 3:03 PM
130	undeveloped nature (big stretches of forest, beaches, streams, inland lakes	7/16/2025 6:49 PM
131	Natural resources will used	7/16/2025 12:31 PM
132	open space, the smell of the woods, beach access, rock hunting, water views (lake and river)	7/15/2025 6:41 PM
133	The friendly community and the cleanliness	7/15/2025 3:34 PM
134	We love the trail systems!	7/14/2025 9:36 AM

Burt Township Recreation Survey 2025

135	Access to beautiful places.	7/13/2025 7:36 PM
136	Accessibility, the number of places open to the public, it is by water, rivers, lakes, trails, and the town has great food and beverage options.	7/13/2025 7:24 PM
137	The preservation of wld recreation areas.	7/13/2025 6:02 PM
138	The amount of opportunities and quiet nature	7/13/2025 5:31 AM
139	That it is available to all	7/12/2025 4:54 PM
140	I love that the parks are clean and simple. I like that they have just enough picnic tables and amenities without being overly built up or detracting from the natural beauty.	7/12/2025 8:19 AM
141	Beach access and High School Forest, the Forest needs better signage and maps for exploring, getting to beaches and hiking	7/11/2025 9:27 AM
142	Boating/fishing	7/11/2025 6:59 AM
143	Variety and availability	7/10/2025 9:11 PM
144	The abundance of activities available at your fingertips.	7/10/2025 3:14 PM
145	We have a beautiful, safe, pristine place where we can participate in activities of our choice. We are not constantly battling, traffic, litter, crime, and all the problems associated with recreation in larger communities. I value that it's accepted to participate in any of a wide range of activities.	7/10/2025 2:54 PM
146	Ease of access. Isolation from large crowds. Clean water and air. No fees.	7/10/2025 2:41 PM
147	Safe harbor, clean beaches. Quiet town.	7/9/2025 10:52 PM
148	The bay, lake, hiking trails, restaurants, shopping almost everything	7/9/2025 1:36 PM
149	Beauty. Clean. Accessible. Private	7/9/2025 8:50 AM
150	It's unlimited outdoor opportunities	7/8/2025 8:20 PM
151	Beauty of our area.	7/8/2025 12:08 PM
152	Nature at its best	7/7/2025 7:51 PM
153	Hiking and swimming	7/7/2025 2:49 PM
154	beauty of the area	7/7/2025 9:54 AM
155	Love the outdoor. Bird watching and habitat conservation. Harbor access.Playscapes for kids. Agate beach access and hiking trails.	7/7/2025 8:20 AM
156	Peace, safety, and beauty of it all	7/7/2025 7:50 AM
157	Not being crowded	7/6/2025 9:45 PM
158	Everything	7/6/2025 8:36 PM
159	I/we value the lack of congestion and the dark skies. You can truly be quite isolated here.	7/6/2025 8:27 PM
160	There are a lot of things to do within walking distance—you do not need a car or much more than a bicycle to enjoy a lot of things in the township. I am speaking more specifically about GM.	7/6/2025 6:16 PM
161	Scenic and natural clean beauty	7/6/2025 2:14 PM
162	Accessibility—things are within close proximity and don't always require a vehicle to access them.	7/5/2025 3:13 PM
163	The variety of outdoor activities in an unspoiled setting.	7/5/2025 11:54 AM
164	Lake Superior	7/5/2025 11:37 AM
165	Access to quiet undeveloped nature	7/5/2025 8:59 AM
166	Freedom to explore. There are some structured facilities & trails, but not over burdened by regulation	7/5/2025 8:38 AM

Burt Township Recreation Survey 2025

167	Easy to get to and enjoy	7/4/2025 2:23 PM
168	Purity of the environment, relatively uncrowded at most times.	7/4/2025 1:23 PM
169	The beauty of the area	7/4/2025 9:12 AM
170	Access to a variety of activities year round	7/4/2025 7:39 AM
171	Nature in abundance! All the great access mentioned above. West bay!	7/3/2025 6:35 PM
172	Wonderful land and varied opportunities for many forms of recreation.	7/3/2025 6:23 PM
173	Safety	7/3/2025 4:59 PM
174	The variety of recreational opportunities	7/3/2025 4:32 PM
175	Nature in abundance. Preserving our harbor of refuge.	7/3/2025 3:49 PM
176	Woods, beaches, water access, beauty, low crowds	7/3/2025 2:13 PM
177	Piece and quiet while being in natural surroundings.	7/2/2025 2:42 PM
178	For residents, it's pretty much right out the door. Great places to take guests.	7/1/2025 4:12 PM
179	The pristine beach, Lake Superior, Sable Lake and Falls.	7/1/2025 12:44 AM
180	The beauty and sometimes peacefulness.	6/28/2025 9:43 AM
181	the town	6/26/2025 7:17 PM
182	Quiet environment. Access to nature. Natural beauty and wildlife. Outdoor activities.	6/26/2025 1:39 PM
183	Water/Beach access	6/26/2025 1:38 PM
184	Openness and availability	6/26/2025 12:52 PM
185	Nature and the availability of the outside activities	6/26/2025 12:01 PM
186	I do not like all the orvs and snow mobiles driving through town.	6/26/2025 11:28 AM
187	Everything outdoors, Nature is its value and the reason visitors visit. Tourism is our business and the reason we exist	6/26/2025 11:26 AM
188	silence. access with good signage. keeping vehicles out of park areas.	6/26/2025 11:10 AM
189	Ease of access	6/26/2025 11:04 AM
190	Rural undeveloped rustic amenities.	6/26/2025 10:45 AM

Burt Township Recreation Survey 2025

Q8 What do you want to see CHANGED about recreation in Burt Township?

Answered: 173 Skipped: 58

#	RESPONSES	DATE
1	Mountain Bike Trails added.	9/13/2025 7:03 AM
2	No suggestions, we love as is	9/9/2025 4:08 PM
3	Absolutely nothing.	9/8/2025 7:50 AM
4	Better boat access, better trails for non snowmobiles in winter and utv grooming	9/3/2025 1:32 PM
5	Rody Creek truck trail open back up	9/2/2025 8:50 PM
6	Clear markings and expectations, additional waste receptacles, common sense, and restorative justice-based enforcement policies.	8/30/2025 1:52 AM
7	Not much. Ice skate rink maybe	8/28/2025 8:03 PM
8	Fitness center would be wonderful if it wasn't in a dingy basement. Bike trails allowing safe riding.	8/27/2025 12:11 PM
9	Disability access to the beach!	8/27/2025 12:07 PM
10	Nothing	8/27/2025 11:59 AM
11	Nothing	8/27/2025 11:56 AM
12	More dog-friendly hiking trails.	8/27/2025 11:52 AM
13	Less ORV and side by sides, no burned off roads into the woods, no fenced off logging roads.	8/27/2025 11:50 AM
14	To have School Forest dedicated for quiet activities. Keep ORVs and snowmobiles off the trails.	8/27/2025 11:48 AM
15	Too many tourists.	8/27/2025 11:43 AM
16	Less 4-wheelers.	8/27/2025 11:36 AM
17	I would like to see more picnic tables along the Bay out to coast guard point that have shelter pavilion over the tables, maybe a grill setup also allowing people to access the grounds in all seasons.	8/27/2025 11:33 AM
18	Upgrade bathhouse facilities.	8/27/2025 11:20 AM
19	A dedicated snowmobile trail other than H58. There are many options, multiple trails available.	8/26/2025 3:05 PM
20	Asphalt roads through the campground.	8/26/2025 3:01 PM
21	Enforcement of the loud ATV exhausts.	8/26/2025 2:54 PM
22	Route ATVs and snowmobiles away from local residential areas and protect our rural 2-tracks from destruction by ATVs.	8/26/2025 2:47 PM
23	Nothing	8/26/2025 2:42 PM
24	More regulation on ATVs. They should be able to keep up with traffic and be equipped with turn signals and brake lights.	8/26/2025 2:41 PM
25	More of it.	8/26/2025 2:38 PM
26	More work done to marina and/or coast guard park to promote boating access and fishing. Leave the Bay bank (bandstand area) alone. The view is and always has been amazing and peaceful.	8/26/2025 2:32 PM

Burt Township Recreation Survey 2025

27	Noise and dust of ATVs driving through town. Too many short term rentals. People who long live here come to make noise.	8/26/2025 2:29 PM
28	I would love to see the basketball court get resurfaced and painted with 3-point lines, free throw lines, all the lines. They use it so much and so does the campground.	8/26/2025 2:24 PM
29	Spending \$60 on boat launch permit is crazy! Most of the locals do not pay it. If I am a property tax payer I should not have to pay to launch my boat. This needs to be changed.	8/26/2025 2:20 PM
30	Additional patrols regarding snowmobiles, 4-wheelers, and side by sides - too loud and fast, dangerous to bicyclists.	8/26/2025 2:17 PM
31	Improved trail marking the School Forest	8/26/2025 2:10 PM
32	Need to address the sand in the bay.	8/26/2025 2:08 PM
33	Improve signage so people will (hopefully) pick up trash, dog poop, keep speeds low, and noise down. ENFORCE THE RULES!!	8/26/2025 2:05 PM
34	Better signage as to what is where!	8/26/2025 2:02 PM
35	NOISE CONTROL! Stop 4 wheelers and snowmobiles in town- they can park and drive to town. Theyre ruining living here.	8/26/2025 1:54 PM
36	Less ATVs and less snowmobiles in town. No ATVs or snowmobiles in the school forest. Enforced speed limits in town.	8/26/2025 1:42 PM
37	Available public restrooms.	8/26/2025 1:37 PM
38	Bike lane on H58 east of Grand Marais to School Forest.	8/26/2025 1:34 PM
39	More quiet sports activities.	8/26/2025 1:30 PM
40	Bike lanes on H58	8/26/2025 1:27 PM
41	Concerned about the constant noise from snowmobiles and four-wheelers.	8/26/2025 1:22 PM
42	Not sure	8/26/2025 1:17 PM
43	Get ORVs off the residential streets. Get the alcohol use of visitors under control.	8/26/2025 1:14 PM
44	Limit the number and access of motorized vehicles such as motorbikes and ATVs.	8/26/2025 1:10 PM
45	I always thought how cool it would be to add some kind of down hill race into town events. Something that rolls free, it would attract a lot of people to watch \$\$\$	8/26/2025 12:58 PM
46	A bike lane on H58 East of town and M77	8/26/2025 12:54 PM
47	Less noise, better law enforcement.	8/26/2025 12:51 PM
48	WAY too many Tourists.	8/26/2025 12:48 PM
49	Absolutely NO selling of the UP Land to Foreigner Corporations whatsoever! The law much be changed.	8/26/2025 12:44 PM
50	More consistent grooming of snow trails during the week, drop the drag to dig out moguls please.	8/26/2025 12:13 PM
51	Fewer "events" filling up the village. sometimes less is more.	8/26/2025 12:03 PM
52	Use the rec/ community center's parking lot instead of bayshore park.	8/25/2025 4:16 PM
53	More handicapped access areas for fishing.	8/25/2025 4:14 PM
54	Fewer rentals, more open space, snowmobiles are too loud.	8/25/2025 4:12 PM
55	Larger indoor recreation center, basketball, ping pong, yoga, exercise machines, bike path on H-58	8/25/2025 3:58 PM
56	Nothing, don't start putting excessive restrictions on people who spend a lot of money supporting local businesses.	8/25/2025 3:50 PM
57	I'm not there enough to answer.	8/25/2025 3:43 PM

Burt Township Recreation Survey 2025

58	Nothing, please no franchises.	8/25/2025 3:40 PM
59	no development	8/25/2025 3:37 PM
60	Regulation of noise levels and ORVs.	8/25/2025 3:33 PM
61	Bring the fitness center out of the dingy basement!	8/25/2025 3:30 PM
62	Not much to do, letting nature run its course.	8/25/2025 3:28 PM
63	Keep more first-come campsites available in the park. believe it or not, I still camp in the park a few times a year. Don't like having to make a reservation 6 months in advance.	8/25/2025 3:08 PM
64	Maybe web cams so I can see parks whenever I want! And those using the parks will realize they are being watched and get caught.	8/25/2025 3:04 PM
65	Nothing.	8/25/2025 3:01 PM
66	We can NOT ACCESS Ellen St Beach. It's UNDERWATER! Devaluing our property values.	8/25/2025 2:57 PM
67	Nothing.	8/25/2025 2:51 PM
68	nothing	8/25/2025 2:49 PM
69	Less noise from motorized recreation devices. Does the "music" festival have to be all noise?	8/25/2025 2:47 PM
70	More bike infrastructure, slow down traffic in town, fewer ATV rentals- this has gone crazy!	8/25/2025 2:44 PM
71	Increased snowmobile safety.	8/25/2025 2:42 PM
72	Police presence.	8/25/2025 2:39 PM
73	More vacation rentals to promote competition.	8/25/2025 2:36 PM
74	Eliminate 4 wheelers running in town. Have a trailhead for gas.	8/25/2025 2:33 PM
75	Control routes for ATVs, our streets are like raceways into the wee hours! Caravans of ATVs travel our country roads as if they were automobiles. Also very difficult to pass safely. Remember it takes residents to continue as a "tourist town".	8/25/2025 2:31 PM
76	Limit side by sides and snowmobiles on town roads, enforce speed limit of 25 mph if on roadways, have public restrooms, not just portajohns	8/25/2025 2:20 PM
77	Control the 4 wheelers and snowmobiles high speeds through town.	8/25/2025 2:14 PM
78	The influx of people that dont fully appreciate the area!	8/25/2025 2:06 PM
79	Better control of 4 wheelers	8/25/2025 2:02 PM
80	Too many parks, small ones are easier to keep up.	8/25/2025 1:56 PM
81	I'm against any and all changes that might increase taxes further. I have zero access to Grand Marais in winter, my road is not plowed.	8/25/2025 1:54 PM
82	NA	8/25/2025 1:50 PM
83	We need real drainage and paved parking lot for the marina. The coast guard dock park should be developed and opened to the public, but the concrete retaining wall kept to protect our shoreline and beaches.	8/25/2025 1:48 PM
84	No food trucks on the bay, no Fired up food trucks on the bay, no orange food trucks on the bay. NO FOOD TRUCKS ON THE BAY	8/25/2025 1:31 PM
85	Less recreational vehicles in town	8/25/2025 1:19 PM
86	Nothing that stands out	8/25/2025 1:13 PM
87	Improved access for people of all abilities. Agate beach provides a ramp however the bathroom facilities, access at other sites, etc. are not as inclusive and accessible. Also, stronger enforcement of speed limits for ORVs and Snowmobiles as they enter into the residential/downtown area. Stronger invasive species control and removal at access sites.	8/20/2025 11:15 AM
88	Don't want to look at food trucks from the beach. Get rid of it. Leave things as natural as possible all over town - we like it and people come for it. Maybe put a crosswalk from green	8/18/2025 8:40 AM

Burt Township Recreation Survey 2025

	space to where stairs start to encourage people to use it. Traffic is getting really congested at the top with people standing half out in the middle of the road near the food truck - it is becoming dangerous to drive through there and watch for everything that is going on and movements.	
89	For starters you guys could quit trying to buy up every possible piece of property and turning it into 'greenspace'. Besides, it is not the Township's responsibility to provide entertainment.	8/17/2025 1:49 PM
90	Trail markings, pontoon rental, historical walking tour ie headsets available at rec center	8/14/2025 2:49 PM
91	More group activities, more 5ks, yoga on the beach, hiking groups.	8/14/2025 9:46 AM
92	A dog park would be great. I know the softball field is available, but would appreciate a smaller park for smaller dogs.	8/12/2025 5:47 PM
93	Better way into town on snowmobiles.	8/12/2025 1:05 PM
94	Better utilisation of Woodland park. To many vacant reserved sites.	8/12/2025 8:40 AM
95	Bike/walking path on east h-58. It is dangerous to go from Ellen Street to Cemetery Road. A pedestrian path along M-77 up to Lowder Road is also needed. With the current speed limits something is needed	8/6/2025 7:03 AM
96	Control the ORVs. They seem to run amuck!	8/5/2025 4:16 PM
97	More camping options.	7/31/2025 2:28 PM
98	Establish a different route to the gas station for ORV's and snowmobiles to keep them from speeding past the school	7/31/2025 12:44 PM
99	Longer hours.	7/30/2025 7:44 PM
100	Nothing	7/30/2025 3:04 PM
101	Clean up and maintain what is currently available to people. Examples: the playset area on the beach needs to be kept up with weeding and new mulch yearly. My number one thing would be to add more docks at the marina. I would leave my boat in the water for months and I am not the only one. It would be another attraction for town. You will need to spend money to make money on it. Do some work in the campground on many of the sites. Replace firepits that are in ground, fill in sites that have a depression and get filled with water when it rains.	7/30/2025 9:23 AM
102	Edward beach access. Before last year I used it regularly. I haven't tried it this year so I do not know if there is a clear path. I walk along the shorelines to use it.	7/30/2025 9:10 AM
103	I would love to see more effort taken to preserve beach and natural feature preservation. If playground improvements are made it would be incredible to include play structures for older children and teens too. They are always overlooked.	7/30/2025 2:28 AM
104	The excessive ATV, Side by Sides & whatever other ORVs are running wild and absolutely destroying any peace in town. It doesnt seem that there is any enforcement of existing ordinances. Noise ordinances should actually be enforced during the night. I'm all for recreation in town, but there needs to be respect for residents, visitors and the beautiful surroundings here, too.	7/30/2025 1:45 AM
105	I would love to see an expanded marina and more bike paths!	7/29/2025 7:04 AM
106	N/a	7/28/2025 7:43 PM
107	Move snowmobile trail outside of town. Add more sidewalk west of Woodland Park on Braziel St.	7/28/2025 1:18 PM
108	Nothing off top of my head.	7/24/2025 5:44 PM
109	Fewer snowmobiles	7/23/2025 6:19 PM
110	Nothing specifically, other than ensuring it is protected.	7/23/2025 11:01 AM
111	Over the years the town has sacrificed its quiet peaceful atmosphere for the sake of bringing in money making opportunities ie side by sides, snowmobiles etc. You do not see these machines running through residential areas and the downtowns of neighboring towns of Newberry and Munising anywhere near the levels you see in G.M. I would like to see G.M. ban	7/22/2025 8:37 AM

Burt Township Recreation Survey 2025

	these machines in the village limits. Until then I would like to see some pro active law enforcement of these machines.	
112	I think the ordinance is good with 25 mph for orv and snowmobiles. The current ordinance seems to be a good fit	7/21/2025 6:23 PM
113	Continue to improve the accessibility.	7/21/2025 6:24 AM
114	Nothing that comes to mind.	7/20/2025 10:07 PM
115	Better facilities	7/20/2025 3:40 PM
116	Trailhead parking. Year round restroom availability for tourists improved signage for trails, local attractions and history tidbits, recreation courtesy tips.	7/18/2025 3:03 PM
117	Add bicycling trails east to School Forest, and west to Sable Lake. Lobby the Park Service to add these trails to their plan for services. This time, let's see the Twp. Board take some genuine actions to implement it. If the Twp. Board doesn't have the time to do some of the 'legwork' for this plan, encourage volunteer groups to get involved. I.e., build on the local expertise!	7/16/2025 6:49 PM
118	Better signage & maintenance. Restroom facilities	7/16/2025 12:31 PM
119	Cheaper food options and not fried food when done recreating.	7/15/2025 6:41 PM
120	Nothing in particular	7/15/2025 3:34 PM
121	The only thing is that cars do not respect orv's, but that may be something that can't be changed.	7/14/2025 9:36 AM
122	Nothing	7/13/2025 7:36 PM
123	More friendly to sxs, atv, and for the locals to be more receptive to tourists. That is what made us find GM, amd without tourists the town will die. People aren't moving to GM to be permanent residents as much as older generations are passing. To survive, there needs to be a balance and appreciation for what tourism can do for GM. More of a "come see what is special about the gateway to Pictured Rocks National" and tell the story of the most quaint beach town with more than just a beach & access to trails.	7/13/2025 7:24 PM
124	More bike infrastructure, non motorized connection between school forest and sable falls. More emphasis on non motorized summer and winter recreation.	7/13/2025 6:02 PM
125	Side by Sides are ruining the quiet atmosphere of the town, they should be restricted to a certain designated route, as well as noise restrictions	7/13/2025 5:31 AM
126	More rules for side by side speed and have it monitored.	7/12/2025 4:54 PM
127	The playground on the bay could use a little tic, nothing major but it could be cuter!	7/12/2025 8:19 AM
128	Make access the priority for rivers and beaches	7/11/2025 9:27 AM
129	Don't lose the beauty and use of the harbor	7/11/2025 8:59 AM
130	Better access for disabled such as boardwalk in beach areas	7/10/2025 9:11 PM
131	1. An up to date fitness/exercise center. 2. Have designated trails for ORV riders to help maintain 2-track trails, especially in School Forest.	7/10/2025 3:14 PM
132	As a "local", I would like to see more enforcement of township ordinances regarding ATVs (speeding, riding on beach, etc.), neglected properties, and parking. We have seen several campers parking on the roadside overnight this summer, which I dont believe is allowed? I know enforcement is a tricky issue, and I am glad we have Nick Paul here to help. Maybe posting an article in the paper on how to contact/report when there is a problem might be helpful. (I apologize if you've already done this. Maybe running it again would be helpful.)	7/10/2025 2:54 PM
133	We need better planning for future park expansion. Creating a less vehicle traffic along the bay parks area. Better parking and better stairs to the beach area. A new bathroom facility for the green space and bay shore park areas. Close through traffic past the green space. Make it more accessible and convenient for pedestrians. We also need a safe bike and walking lane on h-58 heading east.	7/10/2025 2:41 PM
134	More control on snowmobile and utv. Less sand in harbor.	7/9/2025 10:52 PM

Burt Township Recreation Survey 2025

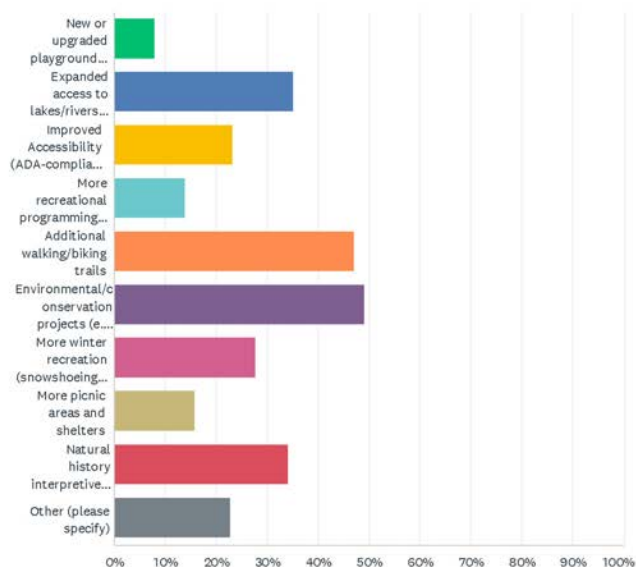
135	I am happy with things as they are. Please just keep things natural, clean and untouched	7/9/2025 1:36 PM
136	Little more dog friendly	7/9/2025 8:50 AM
137	Continued upgrade/renovations of current facilities	7/8/2025 8:20 PM
138	Too many motorized vehicles pollution: noise, dust, air quality, and destruction of nature.	7/8/2025 12:08 PM
139	Need to keep our harbor a safe harbor it is filling in and will not be able to be a refuse for ships	7/7/2025 7:51 PM
140	Need a food truck back on the bay	7/7/2025 2:49 PM
141	n/a	7/7/2025 9:54 AM
142	Better up keep of the Playscape and bathroom access in the harbor	7/7/2025 8:20 AM
143	Change the routes the side-by-sides and atv's use to get to town. Use Back roads instead of main roads the houses are on.	7/7/2025 7:50 AM
144	Limitations to cemetery road access to the beach as well as guardrails to keep UTVs off the beach	7/6/2025 9:45 PM
145	The sand swallowing up the Harbor.	7/6/2025 8:36 PM
146	I want side-by-sides and snowmobiles to SLOW DOWN and have mufflers.	7/6/2025 8:27 PM
147	More accommodation for pedestrian spaces. Maybe creating a car-free street downtown with picnic tables and seating. There are times when it feels dangerous to walk around when the weekenders come in.	7/6/2025 6:16 PM
148	Improving snowmobile trail grooming	7/6/2025 2:14 PM
149	No suggestions.	7/5/2025 3:13 PM
150	Nothing. The current opportunities seem adequate	7/5/2025 11:54 AM
151	Breakwall	7/5/2025 11:37 AM
152	More restrictions on motorsports	7/5/2025 8:59 AM
153	Nothing. Spend the money to reduce property taxes. No need to keep spending more money just create maintenance & costs which will result in more tax burden down the road.	7/5/2025 8:38 AM
154	ATV use is getting over done	7/4/2025 2:23 PM
155	Keep the Bay healthy	7/4/2025 1:23 PM
156	Keep the harbor open. Get the sand out!!	7/4/2025 9:12 AM
157	No change	7/4/2025 7:39 AM
158	More non-motorized Recreation areas/ trails. 25 mile per hour speed limit in town. Vehicle noise ordinance and enforcement. Stop the sand from filling in West bay.	7/3/2025 6:35 PM
159	Reduce side-by-side noise/dust and badly-behaved drivers.	7/3/2025 6:23 PM
160	Nothing	7/3/2025 4:32 PM
161	Better b- ball nets, restore BR on harbor beach, would love to kayak to the point again without having to go thru channel and around Breakwall or dragging my boat a long way to open water	7/3/2025 2:13 PM
162	We welcome anything that improves environmental awareness and that combats climate change.	7/1/2025 4:12 PM
163	Woodland Park Campground returned to first come/first serve sights that worked just fine for years. Now the park is being killed by reservation, which is causing many unoccupied sights, hence less people in the park, hence less people to spend money in the local businesses.	7/1/2025 12:44 AM
164	The noise and lack of respect from the motorized vehicles. The infighting with the businesses ie the Breakwall vs Fired up Food Truck. The divided politics and sheer smugness displayed by in the open.	6/28/2025 9:43 AM
165	to get rid of the campground	6/26/2025 7:17 PM

Burt Township Recreation Survey 2025

166	Reduce the noise from ATVs, snowmobiles, and unauthorized fireworks. Get visitors to respect the fact that people (and wildlife) LIVE here.	6/26/2025 1:39 PM
167	Too much catering to tourists and not the residents	6/26/2025 12:52 PM
168	Would love to see some updates to the marina.	6/26/2025 12:01 PM
169	No snowmobiles or ORVs driving though town	6/26/2025 11:28 AM
170	Maybe finger docks for transient boaters. Woodland park sites deserve more attention as in leveling, paving, spacing. It's definitely in progress but should keep moving in a positive direction.	6/26/2025 11:26 AM
171	keeping vehicles out of park areas. more shade - keep the trees around the bay so we don't all get sunstroke. better signage for the public parks. complete the coast guard point park space. have more ballgames at the community center field.	6/26/2025 11:10 AM
172	Lack of care for the rules	6/26/2025 11:04 AM
173	Nothing	6/26/2025 10:45 AM

Q9 What improvements would you like to see in Burt Township's parks & recreation facilities?

Answered: 202 Skipped: 29



ANSWER CHOICES	RESPONSES
New or upgraded playground equipment	7.92% 16
Expanded access to lakes/rivers for fishing or paddling	35.15% 71
Improved Accessibility (ADA-compliant features)	23.27% 47
More recreational programming (e.g. sports leagues, fitness classes)	13.86% 28
Additional walking/biking trails	47.03% 95
Environmental/conservation projects (e.g., pollinator gardens, native plantings)	49.01% 99
More winter recreation (snowshoeing/skiing trails, sledding, winter camping)	27.72% 56
More picnic areas and shelters	15.84% 32
Natural history interpretive signage	34.16% 69
Other (please specify)	22.77% 46
Total Respondents: 202	

#	OTHER (PLEASE SPECIFY)	DATE
1	Mountain Bike Trails	8/13/2025 7:03 AM
2	More children centered activities, fourth of july celebrations, vendors and games	8/27/2025 12:07 PM
3	Take care of what we have!	8/26/2025 3:01 PM
4	New wider stairways are needed at Bayshore beach	8/26/2025 2:38 PM
5	Keep as natural as possible, less pollution	8/26/2025 2:29 PM
6	An area for children to ride and learn dirtbikes, minibikes, ATVs and could be used for snowmobiles in winter.	8/26/2025 2:24 PM
7	ATV Trails	8/26/2025 2:18 PM
8	Sand in bay	8/26/2025 2:08 PM
9	Improve and expand the fitness center. Maintain all equipment. Always have two working treadmills and ellipticals.	8/26/2025 1:59 PM
10	Leave everything alone for a few years!	8/26/2025 1:54 PM
11	New location for fitness center.	8/26/2025 1:42 PM
12	Enforcement	8/26/2025 1:32 PM
13	Less is more :)	8/26/2025 1:07 PM
14	Open up the house/ historical display on the pier for more hours	8/26/2025 12:58 PM
15	BIKE LANES	8/26/2025 12:54 PM
16	more non-motorized	8/25/2025 4:07 PM
17	Dog walk	8/25/2025 3:53 PM
18	A new fitness center focused on elderly citizens activities is needed.	8/25/2025 3:30 PM
19	web cams	8/25/2025 3:04 PM
20	Ellen St access has been messed with. Could we please have a public path put in for residents to use for beach access? Also property owners along the beach are putting up private property signs and running people off "their" beaches. I thought the beach area was public near the water.	8/25/2025 3:00 PM

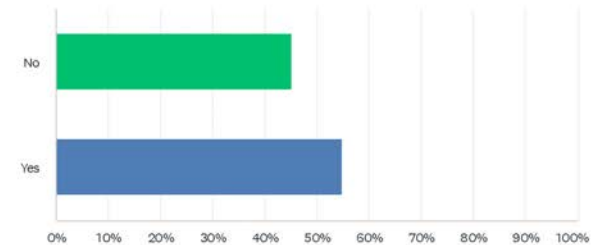
Burt Township Recreation Survey 2025

21	Promote Sable Lake	8/25/2025 2:39 PM
22	Grand Marais is a place we love as it is!	8/25/2025 2:06 PM
23	Historical Signage	8/25/2025 2:02 PM
24	Marina parking lot, Coast Guard dock park	8/25/2025 1:48 PM
25	Enforcement of laws and ordinances	8/25/2025 1:31 PM
26	No new areas needed.	8/25/2025 1:22 PM
27	Put butt cans near the pergola and marina so people can dispose of their cigarettes properly. Just give people a path to safely walk on one side of the paved roads and highways. It would encourage people to walk to town.	8/18/2025 8:40 AM
28	None of the above	8/17/2025 1:49 PM
29	I'm good now	8/14/2025 2:49 PM
30	Concession stands, food trucks, etc!	8/12/2025 5:47 PM
31	I would like additional camping option in the area.	7/31/2025 2:28 PM
32	Dredge the bay	7/31/2025 12:44 PM
33	Angled parking lines at the post office. More docks and upgrades to the marina. Properly grade the marina parking lot. Add stone and drainage grade so the water doesn't sit on it. Leave it stone and do not asphalt it. Create a good trail for snowmobiles to get into town	7/30/2025 9:23 AM
34	Indoor walking/jogging track and ADA-accessible fitness center that includes competition-quality free weights & related machines	7/16/2025 6:49 PM
35	bathroom facilities at trail heads and beaches (as we grow older, we gotta go), and just the occasional bench to rest on.	7/15/2025 6:41 PM
36	More social media online presence telling the story of all the different aspects of GM	7/13/2025 7:24 PM
37	Signage and maps of the trails and high School forest	7/11/2025 9:27 AM
38	I would add local history interpretive signage to the list. Grand Marais is awash in a rich local history!	7/10/2025 2:54 PM
39	Harbor restoration	7/7/2025 7:51 PM
40	If possible a new bath house on the beach. Is grant money available?	7/5/2025 11:54 AM
41	None. Stop trying to accommodate to the potential needs or wants or tourism.	7/5/2025 8:38 AM
42	Extend break wall to the South to stop the sand from filling in the bay and remove the sand that has come in the last 10 years.	7/3/2025 6:35 PM
43	paved marina parking lot	6/26/2025 7:17 PM
44	Marina slips	6/26/2025 12:01 PM
45	Winter camping is huge around the country and it's definitely an area of tourism Burt Township can capture	6/26/2025 11:26 AM
46	Na	6/26/2025 10:45 AM

Burt Township Recreation Survey 2025

Q10 Should the Township pursue purchasing additional properties as they become available? If YES, how should the Township use these properties?
(comment)

Answered: 215 Skipped: 16



ANSWER CHOICES	RESPONSES
No	45.12% 97
Yes	54.88% 118
TOTAL	215

#	YES	DATE
1	Taxes, Fundraising, working with Conservancy's	9/13/2025 7:03 AM
2	Knowledge for visitors. Better compartmentalization of available recreation options to meet everyone's needs.	8/30/2025 1:52 AM
3	I think the harbor would benefit from more commercial properties. So going into town is more shopping than homes along the water. It's valuable real estate that's privately held.	8/28/2025 8:03 PM
4	-	8/27/2025 11:59 AM
5	Preservation.	8/27/2025 11:52 AM
6	Future recreational development.	8/27/2025 11:48 AM
7	More trails, more fishing opportunities.	8/27/2025 11:43 AM
8	Future development to meet community's needs, and not infringe over development of established communities.	8/27/2025 11:33 AM
9	Green space or access to water.	8/26/2025 3:01 PM
10	Limit building, especially along the waterfront of Bay and Lake Superior.	8/26/2025 2:58 PM
11	Sometimes its nice to have undeveloped spaces.	8/26/2025 2:56 PM
12	-	8/26/2025 2:54 PM
13	-	8/26/2025 2:52 PM
14	Use to increase awareness of the unique natural resources and beauty of this area to promote conservation and protection of it.	8/26/2025 2:47 PM

Burt Township Recreation Survey 2025

15	Conservation of the land, control over development.	8/26/2025 2:34 PM
16	That would depend on location	8/26/2025 2:32 PM
17	For more green space - if it doesnt increase taxes.	8/26/2025 2:29 PM
18	public use	8/26/2025 2:21 PM
19	Yes, more access for residents and the public.	8/26/2025 2:17 PM
20	Green areas like woods and trails.	8/26/2025 2:13 PM
21	Depends on the situation	8/26/2025 2:08 PM
22	Just so people have additional quiet space to enjoy as the town gets busy and noisy.	8/26/2025 2:05 PM
23	Conservation of the waterfront, additional parks and beaches and trails.	8/26/2025 1:59 PM
24	Beach access	8/26/2025 1:30 PM
25	If it makes sense to do so. Do we need more public parking? Do we need to keep (protect) the bay?	8/26/2025 1:27 PM
26	Low-income housing.	8/26/2025 1:24 PM
27	Park and picnic	8/26/2025 1:14 PM
28	Low income housing project.	8/26/2025 1:10 PM
29	-	8/26/2025 12:58 PM
30	-	8/26/2025 12:51 PM
31	Public access.	8/26/2025 12:48 PM
32	As parks that cannot be developed or sold off.	8/26/2025 12:44 PM
33	Public use.	8/26/2025 12:39 PM
34	If they are not along the water but in the woods. Then biking and skiing trails could be developed.	8/26/2025 12:03 PM
35	Parks, nature trails, diversify forest species.	8/25/2025 4:12 PM
36	Property on the water should be preserved. Small parks, maybe pickleball, basketball, etc.	8/25/2025 4:07 PM
37	Maybe, should be evaluated according to its merits and costs.	8/25/2025 3:58 PM
38	-	8/25/2025 3:55 PM
39	For visitors to park trailers when visiting.	8/25/2025 3:54 PM
40	For walking and biking.	8/25/2025 3:53 PM
41	To encourage visitors that Grand Marais is a great destination to come and explore.	8/25/2025 3:50 PM
42	To keep Grand Marais quaint, preserving land.	8/25/2025 3:43 PM
43	Preservation of nature and views.	8/25/2025 3:30 PM
44	If you have money to buy properties, the Ellen St access should be fixed FIRST!	8/25/2025 2:57 PM
45	-	8/25/2025 2:53 PM
46	dont know	8/25/2025 2:51 PM
47	Another boat launch?	8/25/2025 2:47 PM
48	Put solar panels on for power generation if not suitable for recreation.	8/25/2025 2:44 PM
49	If reasonably priced and has good use (preserving waterfront).	8/25/2025 2:42 PM
50	-	8/25/2025 2:39 PM
51	Depends on the township's intent. Township should never purchase properties that are in	8/25/2025 2:36 PM

Burt Township Recreation Survey 2025

	competition with private sector, IE rentals or retail.	
52	Allow them to remain vacant- community garden area- additional low income/ subsidized housing.	8/25/2025 2:20 PM
53	-	8/25/2025 2:14 PM
54	Only if it is beneficial.	8/25/2025 2:06 PM
55	Use as green space buffer, lake access depending on location	8/25/2025 2:02 PM
56	As needed to save land for BT people	8/25/2025 1:56 PM
57	-	8/25/2025 1:33 PM
58	-	8/25/2025 1:33 PM
59	To preserve natural beauty.	8/25/2025 1:19 PM
60	The Township should use the properties to balance increased recreational pressure and the need to conserve what visitors come for and invest their dollars around - clean water, trails, forest, etc. Adding new access points is a good use as well and if shelters are needed properties with structures can provide that without needing to build new. Also, if there were properties that would allow the development of an ORV reroute into town that isn't right along residential areas that would be a good use as well.	8/20/2025 11:15 AM
61	I believe real estate is the best investment whether it's a township or an individual, it's an asset and there's only so much property. There's a growth in GM, especially around the bay and Lake Superior, I don't think that's advantageous for residence since it then becomes private property to the waterline. I believe buying the property to hold onto the integrity of the lakes is imperative. There's a brand new house growing up right across from the post office that will block the view for so many people.	8/14/2025 9:46 AM
62	Public access	8/12/2025 8:40 AM
63	Perserve open spaces close to the downtown community	8/6/2025 7:03 AM
64	Only to preserve trail systems if needed.	7/31/2025 2:28 PM
65	Preserve natural settings. Prevent future building.	7/31/2025 12:44 PM
66	I don't know	7/30/2025 7:44 PM
67	Preserve public beach access and natural spaces to prevent too much more building from occurring in those areas.	7/30/2025 2:28 AM
68	Properties could be turned into new recreational areas for picnicking, hiking, unique water access sites, and new activities entirely.... In addition to upgraded rifle range, we could have a dedicated archery range. Better picnic pavilions with grills that aren't right in town or at a campground. Native gardens with seating since the greenspace isn't really utilized in that way. Plants that could encourage native birds, animals, etc to thrive while giving a beautiful location for people to enjoy, whether its for bird watching, having a morning coffee, or meeting up with a friend or to read a book. Additional Little Free Library, game tables (chess/checker board tables would be cute), various types of seating. A location near beach access where we could have designated, safe, fire rings for a unique bonfire park so residents and visitors alike aren't starting fires in dangerous areas. Dedicated pads for food trucks in an area not blocking the bay view, but somewhere people know to go to support whatever vendors are there. New athletic activities in addition to disc golf... we could have a fitness park with outdoor fitness equipment and playground items that encourage more activity for people of all ages. There are many fitness park ideas. I have a billion ideas, but I'm not sure if the form will cut off. :)	7/30/2025 1:45 AM
69	Preservation	7/28/2025 7:43 PM
70	For preservation!	7/24/2025 5:44 PM
71	Community use	7/23/2025 6:19 PM
72	Priority one use would be to keep green spaces that are untouched, or slightly cleared of trees to enhance the area visually and protect the character. Additionally, a large community Garden would be nice. Housing neighborhood for elderly/assisted living.	7/23/2025 11:01 AM

Burt Township Recreation Survey 2025

73	Only if it makes sense. Otherwise let private businesses cater to visitors	7/21/2025 6:23 PM
74	Grants and donations	7/21/2025 6:24 AM
75	Only properties that are necessary to preserve and conserve forests and wildlife.	7/20/2025 10:07 PM
76	Recreational	7/20/2025 3:40 PM
77	Depends on the property but more access for the public is always a good thing.	7/18/2025 3:03 PM
78	First, recognize that Grand Marais is geologically unique. So preserve it but plan around its uniqueness. There's a big need for parking other than on the banks of the bay and along the downtown streets. (Actually, other lake-front towns have found that parking on the bluffs such as at the west end of West Bay leads to destabilizing the bluffs. 'Get ahead of the curve' on this issue.) There is a growing demand for bay public beaches with amenities such as bathrooms, changing stations, and equipment that facilitates access to the water for persons with disabilities and the aging population. There's a market for marina-related docks that facilitate launching kayaks & canoes for persons with disabilities (& that facilitates use by all persons). Off-street parking is needed in the vicinity of bay public beaches -- that or encourage private investment for public parking (of vehicles, ORVs, snowsleds, etc.) and related transport to the downtown area. South of town along M-77, purchase properties for business development.	7/16/2025 6:49 PM
79	Connect properties to create nature corridors for wildlife to get to water and food/nesting/shelter areas.	7/15/2025 6:41 PM
80	Expanding would be great	7/14/2025 9:36 AM
81	Only if they increase access to other areas that are already public. Not for land grab.	7/13/2025 7:24 PM
82	Preservation, non motorized trails	7/13/2025 6:02 PM
83	Township should work with current administration to acquire Sable Lake Beach property and bring back swimming beach	7/13/2025 5:31 AM
84	Na	7/12/2025 4:54 PM
85	Natural/ conservation areas	7/12/2025 8:19 AM
86	But for more parks and access	7/11/2025 9:27 AM
87	Only if the township can grow/benefit from the purchase as a municipality.	7/11/2025 8:59 AM
88	Should be adjacent to areas already owned so services can be expanded and accommodate growth	7/10/2025 9:11 PM
89	Future development. Keep the open spaces, that already exist, open to avoid over-crowding.	7/10/2025 3:14 PM
90	Purchase and conserve property on the harbor to keep it natural for now and future generations.	7/10/2025 2:41 PM
91	To preserve public access	7/8/2025 8:20 PM
92	Preserve our beauty.	7/8/2025 12:08 PM
93	Recreational	7/7/2025 2:49 PM
94	Conservative and parks if land. Not sure about structures/houses that might come up for sale.	7/7/2025 8:20 AM
95	Sure	7/6/2025 8:36 PM
96	The township should purchase desirable properties so they don't become over-built.	7/6/2025 8:27 PM
97	Wildlife refuges or community gardens	7/6/2025 6:16 PM
98	More public spaces	7/6/2025 2:14 PM
99	Not sure.	7/5/2025 3:13 PM
100	Make improvements listed in question #9	7/5/2025 11:37 AM
101	For public access to natural areas and water	7/5/2025 8:59 AM

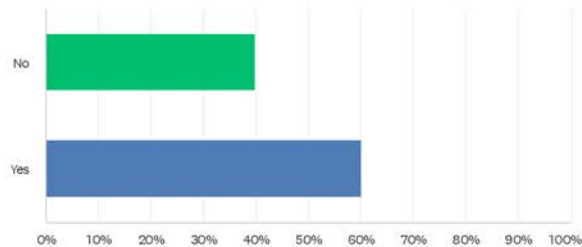
Burt Township Recreation Survey 2025

102	Expanded recreation outdoors and more picnic areas	7/4/2025 1:23 PM
103	Recreational use.	7/4/2025 9:12 AM
104	Parking for vehicles with trailers	7/4/2025 7:39 AM
105	Primarily leave areas in a natural setting except to allow improvements for Public Access as needed	7/3/2025 6:35 PM
106	To preserve the quaintness of our town	7/3/2025 3:49 PM
107	Green space	7/3/2025 3:21 PM
108	Recreational, parks	7/3/2025 2:13 PM
109	Green spaces.	7/1/2025 4:12 PM
110	Keep them undeveloped, hence the phrase more trees less assholes.	7/1/2025 12:44 AM
111	For the people	6/28/2025 9:43 AM
112	Natural areas with access to the beach	6/26/2025 1:39 PM
113	Especially if they are waterfront properties or Pictured Rocks adjacent for conservation and public use purposes	6/26/2025 1:38 PM
114	More recreation area	6/26/2025 12:52 PM
115	Definitely	6/26/2025 12:01 PM
116	Maybe. I don't think a governing body should conflict with private businesses. However, if a need isn't met privately then there should be room for consideration.	6/26/2025 11:26 AM
117	non motorized connection routes between existing park areas. go for acquiring easements along roadways to improve non motorized access to existing parks.	6/26/2025 11:10 AM
118	Conservation with little development.	6/26/2025 10:45 AM

Burt Township Recreation Survey 2025

Q11 Should the Township spend resources to fix up the property/park at the old coast guard boat dock location?If YES, please provide your recommendations.

Answered: 213 Skipped: 18



ANSWER CHOICES	RESPONSES	
No	39.91%	85
Yes	60.09%	128
TOTAL		213

#	YES	DATE
1	Make it a park	9/13/2025 7:03 AM
2	Make finger docks for more boat docking	9/3/2025 1:32 PM
3	Get creative, but emphasize meeting the modern needs of the community. This could be a beautiful space on the water - think amphitheater for performances, accessible history / presentations, a space for people to socialize or break bread, a three (and a half unless there is a big storm) seasons lodge / gathering space where folks can meet and gather, arts and craft lessons in the summer, and some of the types of programming that the community center could have, but feel wierd to have there. Take a look at the way the rentable spaces at Presque Isle and in the market are used for some examples.	8/30/2025 1:52 AM
4	Bring up to standards so it is usable again.	8/27/2025 11:59 AM
5	Preservation is important, however there may be options for grants or even company sponsorships.	8/27/2025 11:56 AM
6	-	8/27/2025 11:52 AM
7	-	8/27/2025 11:44 AM
8	-	8/27/2025 11:43 AM
9	-	8/27/2025 11:37 AM
10	Fix the problem issues and make it usable for the community. Accessible trail and parking. Mini pavilion and picnic accommodations.	8/27/2025 11:33 AM
11	Stop the beach erosion, make the facilities safe, provide a safe dock for boats.	8/27/2025 11:20 AM

Burt Township Recreation Survey 2025

12	-	8/26/2025 3:05 PM
13	It is a very nice location, maybe picnic tables?	8/26/2025 2:54 PM
14	-	8/26/2025 2:49 PM
15	Excellent picnic area, an opportunity to share the history of the community.	8/26/2025 2:47 PM
16	Maybe have some boat slips.	8/26/2025 2:42 PM
17	Wildlife observation/ fishing pier?	8/26/2025 2:41 PM
18	Boat slips	8/26/2025 2:38 PM
19	-	8/26/2025 2:34 PM
20	Create a fishing pier and moorings for boats.	8/26/2025 2:32 PM
21	-	8/26/2025 2:25 PM
22	-	8/26/2025 2:24 PM
23	-	8/26/2025 2:21 PM
24	Public docks would be great.	8/26/2025 2:20 PM
25	Whatever is needed.	8/26/2025 2:18 PM
26	Add picnic tables.	8/26/2025 2:17 PM
27	-	8/26/2025 2:13 PM
28	public access	8/26/2025 2:08 PM
29	It could provide additional boat docking facilities.	8/26/2025 2:05 PM
30	Add additional city beach with public access for non-motorized boats (kayak Launch)	8/26/2025 1:59 PM
31	Make it an accessible picnic area along the bay.	8/26/2025 1:42 PM
32	Pier, rest rooms, another picnic table.	8/26/2025 1:37 PM
33	Please enforce current rules and regulations.	8/26/2025 1:32 PM
34	-	8/26/2025 1:28 PM
35	Enough to keep it safe for visitors.	8/26/2025 1:27 PM
36	But keep it lowkey, maybe a few more picnic tables. Dont lose the seclusion and quiet nature about it.	8/26/2025 1:22 PM
37	kayak launch, parking, benches, picnic tables, refuse containers, maybe shelter.	8/26/2025 1:14 PM
38	-	8/26/2025 1:10 PM
39	-	8/26/2025 1:08 PM
40	-	8/26/2025 12:51 PM
41	-	8/26/2025 12:48 PM
42	Abide by conservational principles- dont overdevelop!	8/26/2025 12:44 PM
43	-	8/26/2025 12:39 PM
44	Perhaps with a grant.	8/26/2025 12:13 PM
45	-	8/26/2025 12:08 PM
46	keep it natural	8/26/2025 12:03 PM
47	-	8/25/2025 4:14 PM
48	Keep natural, also make sure whatever is done doesnt contribute to erosion on that side of the bay.	8/25/2025 4:12 PM

Burt Township Recreation Survey 2025

49	picnic and beach area, maybe small park.	8/25/2025 4:07 PM
50	Its a beautiful area for fishing, canoeing, kayaking, bird watching, dock is in great shape.	8/25/2025 4:02 PM
51	Maybe, depends on the cost. A kayak launch would be nice.	8/25/2025 3:58 PM
52	-	8/25/2025 3:55 PM
53	-	8/25/2025 3:53 PM
54	No specific ideas just think lakeshore property should be maintained and improved if possible.	8/25/2025 3:52 PM
55	Do whatever it takes to keep the town having desirable curb appeal. This will encourage other residents to maintain their homes.	8/25/2025 3:50 PM
56	anything	8/25/2025 3:43 PM
57	Make it into a picnic area.	8/25/2025 3:33 PM
58	If economically feasible, hard to replace whats there. A tax increase would be awful.	8/25/2025 3:28 PM
59	-	8/25/2025 3:00 PM
60	Take ugly trees out, newly plant beautiful trees, picnic tables, could be a nice park.	8/25/2025 2:57 PM
61	dont know	8/25/2025 2:51 PM
62	The proposed renovations of the dock property for fishing, observation pier, and kayak launch site was probably the most appropriate re-purposing of this property.	8/25/2025 2:49 PM
63	Another boat launch.	8/25/2025 2:47 PM
64	-	8/25/2025 2:37 PM
65	Historically preserve it.	8/25/2025 2:36 PM
66	Have a place to launch kayaks away from the marina. Have a picnic shelter. Restroom facilities.	8/25/2025 2:20 PM
67	-	8/25/2025 2:14 PM
68	This is a historical place.	8/25/2025 2:06 PM
69	Picnic spots, restrooms- permanent and temporary, fishing pier, and temp boat dockage	8/25/2025 2:02 PM
70	I would like to see it cleaned up and made safe so it can be used by the public but the concrete retaining wall kept to preserve our shoreline and beaches.	8/25/2025 1:48 PM
71	-	8/25/2025 1:33 PM
72	Improve existing capital assets. Don't purchase additional.	8/25/2025 1:31 PM
73	This would be an amazing green space and park area for the community. It would be a welcome alternative to the current park area right downtown and help to spread out use during the busier months. A kayak launch would be a wonderful addition, a shelter (use the existing buildings for meeting and event space?) and picnic tables/benches would be great and some historical signage. Keeping the shoreline green (not moving to the edge) and putting in a greenbelt/pollinator garden would be a valuable demonstration site for property owners.	8/20/2025 11:15 AM
74	No but the old coast guard place would make a great B & B. Think Chamberlain since the new owners made a mess of it.	8/14/2025 2:49 PM
75	Coast Guard dock draws residence, and tourists, use the assets that are readily available.	8/14/2025 9:46 AM
76	Minimal updates/expense -- maybe more signage so that people know that it's open to the public.	8/12/2025 5:47 PM
77	Mote picnic facilities	8/5/2025 4:16 PM
78	Keeping this area in good repair is a necessity.	7/31/2025 2:28 PM
79	Township owned premium lodging.	7/31/2025 12:44 PM
80	Restore property and reopen as maritime museum	7/30/2025 7:44 PM

Burt Township Recreation Survey 2025

81	Make it educational	7/30/2025 3:04 PM
82	Don't want to say yes until cost and end results are explored. It's a nice spot to walk to but rarely do it.	7/30/2025 9:10 AM
83	I am not sure I am thinking of the correct location. If you are referring to the treed area diagonal to the historical museum, then I think preserving the tree line there is important because it is an interesting feature. Maybe putting in some unobtrusive seating or an observation area where people could watch sunrises would be nice.	7/30/2025 2:28 AM
84	I think ANYTHING historic or related to any potential township park type space should have attention given to it. Any place is an opportunity to enjoy the community, nature or can bring in visitors or help to not overcrowd any particular location at any given time. General maintenance, any "reason" to bring people to a spot, good views, nice relaxing vibes, tables, grills, fishing, etc. My answer is the same for any spots in general.	7/30/2025 1:45 AM
85	Its an opportunity to create something unique in Grand Marais that provides access to the West Bay.	7/29/2025 7:04 AM
86	N/a	7/29/2025 7:43 PM
87	Unsure of specifics, but resources should be spent to maintain the property/park unless we can get grant money to maintain/fix it.	7/23/2025 11:01 AM
88	Picnic tables, gazebo, historical signs, Grand Marais historical facts	7/21/2025 5:37 PM
89	Grants and donations	7/21/2025 6:24 AM
90	Provide historical information.	7/20/2025 10:07 PM
91	Dock	7/20/2025 3:40 PM
92	Swimming dock with water slide. Accessible fishing dock.	7/18/2025 3:03 PM
93	May be great spot for the canoe/kayak handicapped-launch areas, restroom facilities; picnic areas. "No" to businesses of any kind. Parking for that area should be done at pierside north of the property.	7/18/2025 6:49 PM
94	Just stop buying property without a plan, townships length to complete projects is ridiculous, township shouldn't buy anymore property, they aren't developing what they have.	7/16/2025 12:31 PM
95	Minor fix up (potholes, turn cut grass into no-mow landscaping to reduce maintenance expenses, etc.) Picnic tables, etc. Wheelchair accessible pathway would be nice too.	7/15/2025 6:41 PM
96	Clean and maintain, perhaps lease some space to a company that offers water sports rentals?	7/14/2025 8:49 AM
97	Just keep in good repair	7/13/2025 7:36 PM
98	To maintain proper safety and access. Not for anything else	7/13/2025 7:24 PM
99	Yes! Trees, grasses, picnic pavilions, lookout spots, open green space, concert venue, etc. it's such a great destination!	7/13/2025 6:02 PM
100	If it will be usable by the public.	7/12/2025 4:54 PM
101	I lean towards yes because its historic and would be unsightly and sad if not maintained. It seems like it could be a small museum or a historic structure that can be rented for events. But I don't know the details or how feasible that is!	7/12/2025 8:19 AM
102	Make it a picnic spot, kayak and small boat launch for the harbor, make the beach area better	7/11/2025 9:27 AM
103	Make it interesting for the kids	7/11/2025 9:10 AM
104	This is part of areas history and conditions should reflect pride. Poor or run down property will communicate lack of concern for our community.	7/10/2025 9:11 PM
105	The old dock is a perfect place for a fishing pier and picnic area/sitting area with benches. Interpretive signage there would be a great fit and the Historical Society could help with that. I personally feel we should put money there rather than trying to acquire more waterfront, since the township already owns that parcel.	7/10/2025 2:54 PM
106	Beautiful area	7/9/2025 8:50 AM

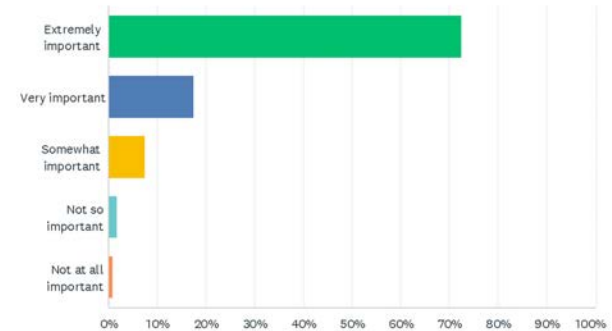
Burt Township Recreation Survey 2025

107	Fix it up	7/7/2025 2:49 PM
108	It's a peaceful, quiet place to visit. Nice place to see the Coast Guard Blds, and the bay as well.	7/7/2025 7:50 AM
109	Just clean up the concrete on the beach	7/6/2025 9:45 PM
110	Preservation is important	7/6/2025 8:36 PM
111	I think the history of the old boat dock is valuable. It doesn't need to be fancy or fussy, but protected.	7/6/2025 8:27 PM
112	Don't have a strong opinion about this.	7/5/2025 3:13 PM
113	Not sure. If spent on this, then what doesn't get done?	7/5/2025 11:37 AM
114	Create a picnic area	7/5/2025 8:59 AM
115	Suggest to spend a few dollars to clean it up. Dont add new amenities but more cleanup, organize, make what is there more presentable and inviting. As is visually it is not very welcoming to stop by unless you have a specific purpose of your boat	7/5/2025 8:38 AM
116	Make it a viewing site and some fishing	7/4/2025 1:23 PM
117	Make it accessible and keep it up!!	7/4/2025 9:12 AM
118	Restored as a historical site/museum	7/4/2025 7:39 AM
119	Demolish old, dangerous dock. DO NOT spend hundreds of thousands building fishing platforms. Just fix retaining wall and remove debris. Install a few benches and interpretive signage showing history, and plant wildflower garden.	7/3/2025 6:23 PM
120	Water access	7/3/2025 3:21 PM
121	Picnics, beach/ swim / paddle access	7/3/2025 2:13 PM
122	Turn it into a type of Coast Guard Museum.	7/1/2025 12:44 AM
123	Make it more of an actual park with seating available, covered areas	6/26/2025 12:52 PM
124	Absolutely	6/26/2025 12:01 PM
125	Fix the boat dock.	6/26/2025 11:28 AM
126	That is a desirable location and would offer visitors and members of the community options for water/beach access.	6/26/2025 11:26 AM
127	there is a plan in place already and the adjacent property owners agreed to the plan. it just needs to be implemented in a timely fashion with erosion control.	6/26/2025 11:10 AM
128	If there is an anticipated use.	6/26/2025 10:45 AM

Burt Township Recreation Survey 2025

Q12 In your opinion, how important is the Harbor/ Bay area?

Answered: 229 Skipped: 2



ANSWER CHOICES	RESPONSES
Extremely important	72.49% 166
Very important	17.47% 40
Somewhat important	7.42% 17
Not so important	1.75% 4
Not at all important	0.87% 2
TOTAL	229

#	WHAT MEASURE(S) SHOULD BE TAKEN TO PRESERVE THE HARBOR/ BAY AREA?	DATE
1	none	9/13/2025 7:03 AM
2	Whatever needs to be done to preserve it.	9/8/2025 7:50 AM
3	Better boat launches, more docks, better fish cleaning station maintenance	9/3/2025 1:32 PM
4	Partnerships with area tribal representation. Authentic and participatory history.	8/30/2025 1:52 AM
5	I love that GM is well taken care of and that you rarely see litter/ garbage on the ground or beaches. The township is doing a GREAT job, thank you! <3	8/27/2025 12:07 PM
6	Keep it dredged.	8/27/2025 11:59 AM
7	Whatever is necessary within reason - would seek out grants and government loans.	8/27/2025 11:56 AM
8	Get the Army Corp of Engineers to develop a plan to preserve the Harbor/ Bay.	8/27/2025 11:48 AM
9	Any and all, it cannot be replaced.	8/27/2025 11:37 AM
10	Route the sucker river into the bay!	8/27/2025 11:36 AM

Burt Township Recreation Survey 2025

11	The harbor/ bay is Grand Marais' greatest attraction and MUST be maintained. Corrective actions need to be researched and implemented to thrive into the future.	8/27/2025 11:33 AM
12	Take care of it and keep it clean.	8/26/2025 3:01 PM
13	Routine dredging until a long-term solution to fix incoming sand is figured out.	8/26/2025 2:58 PM
14	Routine dredging until a long-term solution to sand issues is found.	8/26/2025 2:56 PM
15	Monitor sand infiltration and dredge if necessary.	8/26/2025 2:54 PM
16	Anything necessary to ensure its health, to protect from erosion, fill and development hazards. For instance, how did a septic system get approved yards from the harbor beach and playground??	8/26/2025 2:47 PM
17	Infrastructure maintenance and dredging where/ when needed. Continued participation in the small harbor coalition.	8/26/2025 2:41 PM
18	NO PARKING ON BAY EVER. Better accessible steps to beach area.	8/26/2025 2:38 PM
19	Dredging, whatever needs to be done.	8/26/2025 2:36 PM
20	The harbor is the centerpiece of the town.	8/26/2025 2:32 PM
21	Keeping all water and air resources clean and garbage/ litter/ pollution free, being good environmental stewards is always important.	8/26/2025 2:29 PM
22	All measure possible, Whatever it takes.	8/26/2025 2:24 PM
23	Get the army corp of engineers to get their act together and do the job right. Don't miss out on grant opportunities for marina/ harbor monies that were available through the DNR that were missed this year (50K :())	8/26/2025 2:17 PM
24	Complete protection.	8/26/2025 2:13 PM
25	All reasonable efforts.	8/26/2025 2:10 PM
26	SAND	8/26/2025 2:08 PM
27	Keep it accessible for boating.	8/26/2025 2:05 PM
28	Dredging of shipping channel	8/26/2025 2:02 PM
29	Continued dredging, maintain the water access, don't allow too many moorings in the water.	8/26/2025 1:59 PM
30	Stop improving access. The litter keeps getting worse.	8/26/2025 1:54 PM
31	Any - if this is still the only harbor of refuge for many miles east of town!	8/26/2025 1:42 PM
32	All of them!	8/26/2025 1:37 PM
33	Dredging is long overdue. Rubble wall project did not follow through with regular periodic dredging.	8/26/2025 1:34 PM
34	Any and all, its a harbor of refuge.	8/26/2025 1:32 PM
35	This question infers that there is a problem existing and that the harbor is in need of preservation. I am aware that an unscentific "study" was conducted and presented to the township board recently regarding the "sanding in" at the end near the breakwall. Should this be considered a threat to the harbor and asked to be acted upon, a truly scientific study should be conducted beforehand.	8/26/2025 1:22 PM
36	I like the recent effort to support historical learning and dialogue about future actions in the bay/ harbor given inevitability of continued sand management needs because of natural evaluation of coastal areas.	8/26/2025 1:17 PM
37	Dredging but not sure how or who should fund it.	8/26/2025 1:14 PM
38	Improve water circulation in bay with Lake Superior.	8/26/2025 12:54 PM
39	Only actions based on sound research and information.	8/26/2025 12:51 PM
40	Whatever it takes	8/26/2025 12:48 PM

Burt Township Recreation Survey 2025

41	Any and all measures. It is a precious resource.	8/26/2025 12:44 PM
42	Everything needed should be done!	8/26/2025 12:39 PM
43	Work with state government on a permanent fix.	8/26/2025 12:13 PM
44	Less gentrification. Keep it natural.	8/26/2025 12:03 PM
45	Stop using the entire area as a parking lot.	8/25/2025 4:16 PM
46	Not sure, but something.	8/25/2025 4:14 PM
47	Need to dredge the sand- the bay is filling up on one side and eroding on the other. need to add sand and rocks on eroding side.	8/25/2025 4:12 PM
48	Looks like the breakwall didnt work! Why is sand accumulating, especially on the south side? Maybe it's time to remove the breakwall and let nature take its course.	8/25/2025 4:07 PM
49	Army Corps of engineers needs to figure out why sand is in the bay from the pier.	8/25/2025 4:02 PM
50	Any and all!	8/25/2025 4:00 PM
51	Dredging.	8/25/2025 3:58 PM
52	whatever is necessary.	8/25/2025 3:47 PM
53	Whatever measures that make sense environmentally and financially or figure out how to adopt to the changes that will come.	8/25/2025 3:43 PM
54	Preserve antiquity	8/25/2025 3:37 PM
55	Keep height restrictions on buildings to preserve views.	8/25/2025 3:33 PM
56	Get the food trucks out of the bay!	8/25/2025 3:30 PM
57	Hands off!	8/25/2025 3:28 PM
58	This question requires the competence of engineers more qualified than those who designed the breakwall and lobbyists who often strategize about how to get funding and other resources to remove sand. I also wonder if there is any company that would be able to use sand so arrangements for removal can be made.	8/25/2025 3:17 PM
59	A planned dredging program may be required to maintain the long term sustainability of the harbor and bay.	8/25/2025 3:14 PM
60	SEWER SYSTEM	8/25/2025 3:08 PM
61	Removing the sand buildup. Figure out a way to stop the buildup.	8/25/2025 3:04 PM
62	Work with army corp of engineers to develop and implement a plan to stop the filling with sand.	8/25/2025 3:01 PM
63	Whatever is necessary.	8/25/2025 3:00 PM
64	Whatever is needed."	8/25/2025 2:51 PM
65	Would it be possible to keep the east breakwall open to allow circulation, otherwise we are heading toward a little lake pollution site.	8/25/2025 2:47 PM
66	Minimize new building	8/25/2025 2:42 PM
67	A dredging study.	8/25/2025 2:39 PM
68	Put the breakwall where it is supposed to be (running east and west).	8/25/2025 2:33 PM
69	Look into sewer system for homes and businesses that would leach into the bay.	8/25/2025 2:20 PM
70	Again, this is sacred ground. We MUST realize this and protect it for future generations.	8/25/2025 2:06 PM
71	Dredging program on regular basis	8/25/2025 2:02 PM
72	Those necessary to keep the harbor from filling in.	8/25/2025 1:57 PM
73	I like the idea of no franchise businesses because I feel the township could become overly developed or commercialized. We feel the harbor is maintained well as it is with no major	8/25/2025 1:48 PM

Burt Township Recreation Survey 2025

	changes needed. We'd like to see the harbor kept mostly the way it currently is.	
74	All measures available. No cost restrictions. The bay is what defines Grand Marais, we lose the bay, we lose GM	8/25/2025 1:31 PM
75	Follow the guidance of Bill and Bob as they research and create a plan.	8/25/2025 1:22 PM
76	All available.	8/25/2025 1:19 PM
77	Reduce/eliminate new residential development to avoid water quality impacts from septic and a further reduction in critical dune habitat. The dunes are vital for a resilient shoreline and protecting against strengthening storm and weather events.	8/20/2025 11:15 AM
78	Put a sign at the marina to tell people not to throw their cigarette butts off their boat because they float up on the beaches. And make sure all public areas have trash cans and daily pick up.	8/18/2025 8:40 AM
79	Dredging - but this should be done by the Army Engineer Corps, not the township.	8/17/2025 1:49 PM
80	It's the towns background canvas	8/14/2025 2:49 PM
81	Stop building around the lake and bay, the beauty of GM is the visibility of these two beautiful bodies of water.	8/14/2025 9:46 AM
82	Shouldn't this be a joint effort with the state/ EGLE? It's important, but it doesn't seem like our taxes should pay for it.	8/12/2025 5:47 PM
83	Erosion control, control sand infiltration	8/12/2025 8:40 AM
84	Work with corp of engineers to keep harbor open	8/6/2025 7:03 AM
85	Dredging	8/5/2025 4:16 PM
86	This is the key point to the entire town. I believe expansion of accommodations for traveling/transient vessels would be extremely beneficial to the township.	7/31/2025 2:28 PM
87	Every measure at the townships disposal should be taken to preserve the bay! Dredge to establish depth and plan future dredging to maintain water depth. Limit new building.	7/31/2025 12:44 PM
88	I am not an engineer	7/30/2025 7:44 PM
89	Keep it clean and natural	7/30/2025 3:04 PM
90	It is the heartbeat of this town. There is no need for new landscaping or a switchback walking path from the top. Just preserve what we have now. Fix the bathroom, new steps going down, make a real marina, spend the money on dredging. I do not like the idea of having the DNR involved in any way, we can not give away authority on what happens the harbor or shoreline.	7/30/2025 9:23 AM
91	Maintenance seems like a logical direction depending on what it entails. It is my understanding that it is a human made access. Did they break wall perform as expected? Is it affordable to dredge? I've read that certain sand is very valuable for construction etc but costly to transport and remove. I have more questions than suggestions before I could make an informed response.	7/30/2025 9:10 AM
92	I honestly dont know. It seems like something like periodic dredging will have to happen. If there are alternative breakwall options that can help prevent sand filling in, then those should be explored.	7/30/2025 2:28 AM
93	Same answer as last question and any other locations. Everything should be maintained, turned into a destination and usable land even if it is small things like general maintenance, infrastructure stability, native plant installation, seating...	7/30/2025 1:45 AM
94	Its an asset that should be a priority to protect. The breakwall has proven that it was not designed correctly and measures should be taken to dredge the bay.	7/29/2025 7:04 AM
95	Dredge the channel. Improve the boat launch.	7/28/2025 1:18 PM
96	No more development	7/23/2025 6:19 PM
97	Dredging as needed.	7/22/2025 8:37 AM
98	Build or tear down a portion of the break wall to stop the sand from filling in the bay	7/21/2025 5:37 PM

Burt Township Recreation Survey 2025

99	Dredging as necessary	7/21/2025 6:24 AM
100	The Harbor/Bay Area are the heart of Grand Marais. What ever it takes should be done to preserve the area	7/20/2025 10:07 PM
101	It should be THE top priority for the Township.	7/18/2025 3:03 PM
102	I dont know. But IMHO, the Army Corps of Engineers hasn't shown it has the expertise, creativity or willingness to come up with excellent options. I do think that to resolve the issues well for the long-term, the plan must expand its focus beyond West Bay to include the Lake and beaches from the south end of the original east pier to the east. Probably Sucker River needs to empty into West Bay. Probably runoff waters from the south of town need to be encouraged to dump into West Bay.	7/16/2025 6:49 PM
103	Keep as much as the natural beauty as possible, low maintenance (ie: no-mow landscaping w/ just ferns, moss, prairie grass and natural shrubbery)	7/15/2025 6:41 PM
104	All necessary. It is the reason I come to Grand Marais	7/13/2025 7:36 PM
105	Again. Proper maintenance & access, and safety measures	7/13/2025 7:24 PM
106	All measures. It's a vital resource!	7/13/2025 6:02 PM
107	A healthy ecosystem and relatively stable shoreline with limited dredging and building seem like top priorities to me.	7/12/2025 8:19 AM
108	I am not for preservation which limits use, and access should be the key with use for all	7/11/2025 9:27 AM
109	If dredging is needed get it done	7/11/2025 9:10 AM
110	What ever it can without bankrupting the township. Lake Superior and safe access/return through the harbor is what Grand Marais is all about. Remember that when you come down the hill into town what catches your attention and then when you're in town what still catches your attention as you pass through town to the end of m-77 at the beach!	7/11/2025 8:59 AM
111	Upkeep such as dredging should be budgeted before becoming a crisis	7/10/2025 9:11 PM
112	Get the Army Corp of Engineers involved to resolve the problem of the bay filling in with sand so that the residents and visitors of Grand Marais can continue to admire and use the beautiful harbor and bay for decades to come.	7/10/2025 3:14 PM
113	Pursue dredging of the channel and harbor. Investigate a sand bypass system to help prevent and from filling in the harbor. Allow removal of tag alder where it is encroaching. Revamp the old Coast Guard dock area to make it a public recreation facility (see above).	7/10/2025 2:54 PM
114	It is the gem of the community. We should strive to create better parks and recreation areas. Better facilities for bathrooms. Harbor is in dire need of dredging.	7/10/2025 2:41 PM
115	Dredge. Fix the bay filling with sand.	7/10/2025 11:01 AM
116	Get the sand out of it	7/9/2025 10:52 PM
117	Less high grass ticks	7/9/2025 8:50 AM
118	Keep it maintained	7/8/2025 8:20 PM
119	Dredge the bay as needed.	7/8/2025 12:08 PM
120	Need to do something about the sand filling in the bay	7/7/2025 7:51 PM
121	Dredging	7/7/2025 2:49 PM
122	Everything and anything possible. Dredging might be a good idea! Keep it a "safe harbor " for all!	7/7/2025 7:50 AM
123	Dredge	7/6/2025 9:45 PM
124	All measures. Simply put, in the warmer months, the town will Be nothing without it. If you think everyone is shopping up just to Ride ORV trails you're mistaken. The economy in the summer time will collapse in grand Marais over time if there is no longer a harbor.	7/6/2025 8:36 PM
125	The Corp of Engineers should be looking not only at the sanding occurring in the harbor, and	7/6/2025 8:27 PM

Burt Township Recreation Survey 2025

dredging it, but also at the loss of land further to the east at Lonesome Point. Whatever it takes to reverse those issues, should be addressed.

126	Preserving the bay by dredging sand	7/6/2025 6:16 PM
127	Dredging, if needed. Study your understand the cause(s) of the infilling of sand.	7/5/2025 3:13 PM
128	The influx of sand is an issue. Input is needed from technical experts. And did the new break wall contribute to the current sand problem	7/5/2025 11:54 AM
129	It's the heart of the town	7/5/2025 11:37 AM
130	Dredging	7/5/2025 8:59 AM
131	Eliminate ability of food trucks to park next to and block visual of bay, cleanup harbor, make coast guard point more inviting, specially that large empty parking lot	7/5/2025 8:38 AM
132	Way behind on dredging. Support SWB initiatives	7/4/2025 2:23 PM
133	Dredging and beach preservation.	7/4/2025 1:23 PM
134	Any measure necessary to preserve the harbor	7/4/2025 7:39 AM
135	Extend the break wall to the South to stop the sand from filling in the bay. Then dredge out some of the sand that has accumulated along the South shore.	7/3/2025 6:35 PM
136	Stop sand infill - particularly in the southeast corner of Harbor/Bay. Channel to big lake likely needs dredging.	7/3/2025 6:23 PM
137	The harbor is the lifeblood of Grand Marais. Retaining the harbor of refuge designation is a high priority.	7/3/2025 4:32 PM
138	Whatever it takes to preserve the bay should be done.	7/3/2025 3:49 PM
139	Whatever it takes , if affordable	7/3/2025 2:13 PM
140	Law enforcement of existing regulations.	7/2/2025 2:42 PM
141	Anything that can reasonably be done to control sand.	7/1/2025 4:12 PM
142	Try to study and continue to implement ways to stop the sand infiltration, and dredge if necessary.	7/1/2025 12:44 AM
143	How about some dredging to begin with	6/28/2025 9:43 AM
144	Remove sand so more clean, fresh water gets into the bay	6/26/2025 1:39 PM
145	I'm not sure what's being proposed, but the harbor and bay are a huge part of Grand Marais' beauty and attractiveness to tourists. Would hate to see that compromised in any way.	6/26/2025 1:38 PM
146	Whatever necessary	6/26/2025 12:52 PM
147	The reason I go to GM	6/26/2025 12:01 PM
148	Clear the sand out.	6/26/2025 11:28 AM
149	Lowest financial impact. Big Nature will always have its way but considering Army Corp of Engineers and human interference has already impacted the harbor modifications of the breakwall might help return some of the newly acquired beach. But I have no educational knowledge of this topic. I would think about a boat launch of type into the harbor from the end of Coast Guard Point.	6/26/2025 11:26 AM
150	do something about the stormwater pipes that dump directly into the bay from the marina parking lot. this water carries pollutants into the bay, the apple orchard area next to the marina is a good place to dump the stormwater from the marina parking lot so that it can soak into the ground and not go directly into the bay. Also, fix the pipe that dumps water directly onto the Bell's boathouse. That water can also be dumped over on the apple orchard area.	6/26/2025 11:10 AM

Burt Township Recreation Survey 2025

Q13 Do you have any additional thoughts, ideas, or suggestions for improving parks and recreation in Burt Township?

Answered: 121 Skipped: 110

#	RESPONSES	DATE
1	Addition of Mountain Bike Trails.	9/13/2025 7:03 AM
2	Leave them as they've been. Don't mess with the things that have worked for many years.	9/8/2025 7:50 AM
3	Signage at all parks promoting all other parks and rec services would be nice. Often people do not know what else is out there, and no matter how much online presence it has, there is no substitute for a simple directory at all relevant locations that tie them together.	8/30/2025 1:52 AM
4	No closed road.	8/27/2025 11:50 AM
5	As stated above, if this town loses the bay, we will lose our beautiful Grand Marais!	8/27/2025 11:36 AM
6	Keeping ORV riders out of School Forest because they are destroying trails and forest areas. They do not respect the trail or folks hiking along the trails.	8/27/2025 11:33 AM
7	We live in Burt Twp year round and come winter it is nearly impossible to get to town. H58 becomes a snowmobile trail and isnt plowed. The damage to the road by snowmobiles is clear to see, just after a chip seal job. And materials are not cheap! Also Adams(?) Trail is not plowed but is on both ends which leaves about 7 miles of unplowed road and 12 miles from M77 to H58. As the area grows things will always change. There is more to Burt Township than just the bay and the town. In other words, we would love to be able to access our town in the winter, other than by way of making a 150 mile round trip journey.	8/26/2025 3:05 PM
8	Could use more boat slips.	8/26/2025 2:58 PM
9	The food truck should be grandfathered in on the Bay! My husband and I still have a strong feeling the board is making a big mistake and hurting a local business. The food truck is important and affordable. It offers quick service to locals and tourists. Moving the food truck is not a solution. The food truck is for locals when overcrowding, overpricing everything for tourist season comes.	8/26/2025 2:52 PM
10	Clean the steps leading down to Agate Beach and the Harbor. Trim branches and weeds on trails going to the beach. Keep the beach raked and big logs removed. Hang 5 gallon buckets for water at the boardwalk for campfire extinguishing.	8/26/2025 2:49 PM
11	Protect what has made Grand Marais special from its inception, its natural resources (land and water), and its simplicity, peaceful environment, and community commitment to preserving and honoring history and the townspeople.	8/26/2025 2:47 PM
12	More wild roses.	8/26/2025 2:42 PM
13	Bathroom at Bay beach needs to be remodeled or a new one needs to be built. Too many people, too few outhouses.	8/26/2025 2:38 PM
14	No.	8/26/2025 2:36 PM
15	I have been a seasonal resident since 1988. I have been coming to this are since 1970. I would like to see Burt Township control development in a manner that its been done in Leelanaw County. Development is good. OVER development is not. There is a character to Burt Twp and Grand Marais that should be maintained. It's a beautiful place. Keep it that way. THanks.	8/26/2025 2:34 PM
16	Not at this time.	8/26/2025 2:32 PM
17	Usable restrooms at the park, not just the porta potties. A dedicated kids fishing area or an area kidfriendly for fishing.	8/26/2025 2:24 PM
18	Upgrade Woodlawn Park to full hookups	8/26/2025 2:18 PM

Burt Township Recreation Survey 2025

19	Develop bike trails.	8/26/2025 2:17 PM
20	As a full-time resident I would like to see more measure taken for litter control especially after snowmobile season as we always pick up dozens of beer and pop cans from ditches. A sign with penalties posted would help!	8/26/2025 2:08 PM
21	Provide a sidewalk all the way down to Agate Beach so people don't have to walk in the road. It can be dangerous.	8/26/2025 2:05 PM
22	Follow the priorities of the survey. Better enforcement of rules and regulations.	8/26/2025 2:02 PM
23	This town is no longer peaceful, it's overrun with NOISE. There's no law, they rarely patrol here now that we pay for 1 person whom is RARELY SEEN. No Noise regulation. 4 wheelers, all of them, scream up and down and fly through town. The same with vehicles. Someone's going to get run over. It's difficult to do any wildlife viewing. I love dogs but between poop piles, litter, loose dogs and loud music on the beaches, wildlife has changed and dwindled more and more each year. NO MORE DEVELOPMENT FOR TOURISTS. Focus on quiet sports, like walking. Until the township can manage what we have available right now - no further development should take place. I've never been a fan of signs, rules, too many laws, BUT our town has become overrun and we need law enforcement and some prominent signs notifying those who come here or are here that they will be held accountable for riding across lawns, private property, mufflers, noise reductions, littering, dog poop, RACING on H58 East, and speeding. We are becoming a town of rentals and those people are here to have a good time. Many of them (not all) could care less about full-time residents, leave no trace, etc. Stop catering to tourists and focus on full-time residents. NO MORE DEVELOPMENT	8/26/2025 1:54 PM
24	Complete/ repair sidewalks in town. Make bike/ walking path by road to School Forest where there is no path. Fitness Center, moved to a different location at the community center, needs to have its own separate front door and emergency exit on the street level (not basement). Keep this a "dark sky" town! Don't know where Edmund T Warren park is, someone said it is the greenspace uptown.	8/26/2025 1:42 PM
25	Fitness center that does not go up or down so many stairs. Spending a couple thousand dollars on improving equipment like kettle balls, exercise bands, yoga mats, bench press. Restrooms. Improve the fitness center.	8/26/2025 1:37 PM
26	Use funds to enforce rules, laws, regulations, correct blight.	8/26/2025 1:32 PM
27	Tourists love our small town shops and the Bay. Little Food trucks make the town feel special. Town and tourists love to eat and relax and enjoy looking at the bay. Let's keep our small town feel.	8/26/2025 1:30 PM
28	More enforcement and restrictions on ORV and snowmobiles. Put a cap on the amount of VRBOs	8/26/2025 1:24 PM
29	Keep it simple to reflect the uniqueness of Grand Marais, avoid the Bigger, Better, More.	8/26/2025 1:14 PM
30	More signage pointing to more parking available at the Morris St access, everyone parks without knowing about the large area available to the right. Anyways not complaining at all, always love Grand Marais and the great job the township does. Also, I have a place on Wilson on the corner, please have the township trucks stop the loud downshift diesel engine braking, its so loud and annoying!	8/26/2025 12:58 PM
31	We need affordable housing NOT more vacation rentals.	8/26/2025 12:51 PM
32	Keep the Pickle Barrel open. Thank you so much for taking reservations in the camp ground. It's very much appreciated by everyone!	8/26/2025 12:48 PM
33	Change the laws- no selling to foreign individuals and/or LLC corporations representing foreign individuals.	8/26/2025 12:44 PM
34	Make sure to keep the value of tourism in mind, everyone seems to want to throttle back ATV/ snowmobiles with more regulations, but they bring people that spend time and money in the township. Embrace that and keep a good thing going. People come to Grand Marais to escape reality, be grateful for that and dont progress into the towns and cities that are downstate. Keep GM great!	8/26/2025 12:13 PM
35	Please do not overly improve or develop and change forever the natural spots along the water. Leave natural areas along the water. PLEASE. Once its gone, its gone.	8/26/2025 12:03 PM

Burt Township Recreation Survey 2025

36	The more open spaces and green spaces the better. THIS is why people come here. Would like more bike riding lanes.	8/25/2025 4:12 PM
37	I'm not sure where some of the places in question 5 are. When I thought about it, I wondered if we should have a map that might show where these lesser known places are located. This would help tourists and longtime residents, also maybe some signage to show picnic areas, beach access and other recreational opportunities would be helpful.	8/25/2025 4:07 PM
38	More dog poop stands. Tourists walk their dogs and don't clean up after them.	8/25/2025 4:00 PM
39	Embrace the fact that recreational enthusiasts love coming to Grand Marais to enjoy the area and support local business. The gas stations, hardware, gift shops, and restaurants are a huge asset to the town.	8/25/2025 3:50 PM
40	Stop all things related to expansion. Family in residency since 1933, where possible take it back to the pristine unspoiled place it was.	8/25/2025 3:37 PM
41	Improve the Agate Beach outhouses. Construct permanent structure with sewer.	8/25/2025 3:33 PM
42	Keep up maintenance.	8/25/2025 3:28 PM
43	Build aesthetically pleasing permanent sanitation facilities at the end of Coast Guard Point and viewing platform instead of portajohns.	8/25/2025 3:14 PM
44	No.	8/25/2025 2:51 PM
45	Anything to encourage the non-motorized side of things.	8/25/2025 2:47 PM
46	More public restrooms (ADA).	8/25/2025 2:42 PM
47	Remove trees east of Post Office blocking the harbor view.	8/25/2025 2:39 PM
48	Get rid of the noise of ORVs in town, pass an ordinance, they don't run through surrounding towns.	8/25/2025 2:33 PM
49	My taxes are about to drive me out of my home! Market adjustment bullshit! Short term rentals with unlimited purchasing dollars. Businesses for non-residents. At the old coast guard location, install picnic tables, benches, and keep the grass cut.	8/25/2025 2:31 PM
50	Balance what you do so it serves tourists as well as residents.	8/25/2025 2:20 PM
51	Restore and maintain the Bayshore Bath House, provide a program for seasonal residents to dispose of household waste and trash, better maintenance of rifle range, cut grass, second bench, revised backstop positions. Better signage to the various parks and access sites not well marketed and parking at some is difficult.	8/25/2025 2:02 PM
52	no	8/25/2025 1:57 PM
53	no	8/25/2025 1:56 PM
54	Not needed	8/25/2025 1:54 PM
55	How to strike the right balance between preservation and commercial development is an important issues for us. But, since our main industry is tourism, consider this; the possibility of becoming a dark sky park resource for the stargazing and aurora watching community. There is a great potential for Grand Marais to market itself as we have outstanding night sky viewing conditions. I belong to two facebook pages, Michigan Aurora Chasers and Great Lakes Aurora Hunters, with a combined viewership of over 200,000 members. These members network, they travel, and we have what they're searching for. Beyond that I would like, the marina lot needs drainage and new pavement, the coast guard dock park to be cleaned up and make safe and open to the public, and the concrete retaining wall there to be kept to protect our shoreline and beaches.	8/25/2025 1:48 PM
56	Enforce existing laws, issue citations and tow people. Don't allow residents to drive without license plates, proof of insurance, and drivers licenses. Don't allow underage drivers to drive around town. Don't allow reckless driving on Coast Guard Point. Make decisions and enforce them. Don't allow GM residents a "free pass" because they have lived here in a bubble without repercussions. Get a real police officer who will enforce laws or put up a sign that says - Do whatever you want because no one will do anything. Don't allow drunk drivers to drive home without penalty, that includes the drunk golf cart drivers, ATV drivers, and riding lawn mower drivers.	8/25/2025 1:31 PM

Burt Township Recreation Survey 2025

57	The marina is in sad shape and needs LOTS of attention. The parking lot, the marina wall, and the fish cleaning station.	8/25/2025 1:19 PM
58	I have so much appreciation for the parks and recreation spaces in Burt Township and believe in a strong Parks and Recreation plan to set out a vision for the community. With increasing recreational pressure (and development pressure) and growing seasonal/visitor population, including emphasis on conservation and stewardship, incorporating green design elements and public education on how to recreate with the least impact should be prioritized in the plan.	8/20/2025 11:15 AM
59	Improve the lighting for dark sky viewing. The LED streetlights are Bluetooth dimmable so set them to dim at a certain time of the night, and add light hoods.	8/18/2025 8:40 AM
60	Just keep the lawns mown, the trash picked up and make sure people are cleaning up after their pets.	8/17/2025 1:49 PM
61	Better signage on Everette to access points to get to the beach.	8/12/2025 5:47 PM
62	Dont make all sites at woodland park reservation only.	8/12/2025 8:40 AM
63	No	8/6/2025 7:03 AM
64	No	8/5/2025 4:16 PM
65	Cleanliness and safety should always be paramount while making decisions related to our community.	7/31/2025 2:28 PM
66	No	7/30/2025 7:44 PM
67	No	7/30/2025 3:04 PM
68	Bikes and e bikes are very popular with tourists. Lines in our roads should be done yearly and may need to think about putting in bike lanes. Keep up the basketball court, tennis courts, and pickleball courts at the community center.	7/30/2025 9:23 AM
69	I appreciate everything the area has to offer whether I personally currently use those resources.	7/30/2025 9:10 AM
70	I think preservation to township history, especially that of the logging era, and preservation of the incredible natural features of the area should be paramount. There are so many areas in the state that are losing their natural beauty and this area is so incredible and has such an fascinating unique history and that would be a great thing to focus on.	7/30/2025 2:28 AM
71	I believe there needs to be more signage around town, both of educational and historical significance and for direction/general. I believe restrooms and showers for beaches need to be more plentiful and better marked with signage. Foot showers before the boardwalk/porch, would be fantastic. You see this at oceans and beaches in other town so you dont get into your car or a local establishment covered in sand. More sitting areas in town for relaxing, reading, meeting with friends. More tables, both shaded/covered and uncovered. Better wifi & data access in town. It sounds counterintuitive for parks and rec, but the data in town is absolutely awful and I believe it's related. Whether its pulling up a map, calling a friend, completing schoolwork in a community space, playing Pokémon Go at the local "gyms" and "PokerStops" or checking the hours of a local business, I believe data & wifi would help the community and increase recreation and community. More handicapped access to beaches. Not sure if Sable Lake is in the scope of the Twp's ability to change at all, but a cleaned up beach at Sable Lake would be great. The water is much cleaner than in the past, and it should be more of a destination. Clean up the beach/sand so people can swim while their party is fishing on the new dock or climbing the dunes. I dont think we need to revert back to the days of concession stands, but just nicer for recreation. The steps to the bay are cute and quaint, but kind of scary to walk down the older I get.	7/30/2025 1:45 AM
72	Preserve the beach for family activities. The view of the bay is what makes Grand Marais so charming. No building or losing the view of the bay from town.	7/28/2025 7:43 PM
73	No	7/23/2025 6:19 PM
74	In regards to question 10. Burt township has a tremendous amount of land/area available for public use. This includes Pictured Rocks National Lakeshore and lands in the commercial forest act. The idea of Burt Township taking more land off the tax roll by buying it seems foolish.	7/22/2025 8:37 AM

Burt Township Recreation Survey 2025

75	Keep renewable energy and Dollar stores out of the gorgeous little town and clear of sight from the bay	7/21/2025 6:23 PM
76	Keep up the great work. You have one of the best systems for a community of this size.	7/21/2025 6:24 AM
77	Add more boat slips !	7/20/2025 3:40 PM
78	Just remember: if you want to make this place liveable year-round, you need to ensure you keep your year-round residents happy. Do that, you'll get more year-rounders that appreciate 'Nature in Abundance'.	7/16/2025 6:49 PM
79	Restroom facilities are terrible in the township. Even playground bay facilities are sitting as another unfinished/unmaintained township property	7/16/2025 12:31 PM
80	Gas station on outskirts of town so it doesn't impede the view of the bay and they can have bigger tanks so they don't run out of diesel. The current gas station location would make a nice park addition with covered picnic tables maybe a fire pit, etc.	7/15/2025 6:41 PM
81	Keep doing what you're doing. We love it here.	7/14/2025 8:49 AM
82	No	7/13/2025 7:24 PM
83	Thank you for taking the time to gather input.	7/13/2025 6:02 PM
84	Increase safe route to take kids bike riding, limit snowmobiles and 4wheelers to specific routes, daylight hours only	7/13/2025 5:31 AM
85	No	7/12/2025 4:54 PM
86	Would like more effort into the High School forest area	7/11/2025 9:27 AM
87	Start some different types of fund raising programs that residents as well as visitors can all contribute to.	7/11/2025 8:59 AM
88	Does our community have a dog park or trail where people can exercise their dog?	7/10/2025 9:11 PM
89	School Forest should be for quite activities (hiking/walking, snowshoeing, birdwatching/wildlife viewing, fishing, disc golf), not for recreational snowmobiling or ORV trail-riding.	7/10/2025 3:14 PM
90	We need a cellphone repeater tower in town. I know this was discussed by the previous Board but it's time to revisit it. It is a safety issue with your EMS personnel dependent on alerts sent via wireless, and we can't receive those alerts if there is no signal in town. This impacts our parks and recreation as the repeater tower would probably be placed on township property. It would also relieve the congestion at the boardwalk beach from people who are out there trying to get a cell signal from over the top of the hill.	7/10/2025 2:54 PM
91	Safe bike and walking paths heading east and west from grand Marais on h-58. Harbor dredging. New bathroom facilities for the downtown area. Stop the overwhelming seasonal vacation rentals from taking over our community. Help young families more and less catering to seasonals, tourists and seniors. Create a community that will attract young families by creating full time jobs and affordable housing.	7/10/2025 2:41 PM
92	Open museum	7/9/2025 8:50 AM
93	Signage for litter bugs. 'Give a hoot, don't pollute'	7/8/2025 12:08 PM
94	Let's work on keeping our harbor for future generations	7/7/2025 7:51 PM
95	No	7/7/2025 2:49 PM
96	Signs at agate beach to encourage people to walk on the boardwalk to protect the dune plants to decrease erosion and sand drifting. Possibly do some dune plantings	7/7/2025 8:20 AM
97	Daily Police presence is a must! Tourists know there aren't any, and sadly, act accordingly.	7/7/2025 7:50 AM
98	Dredge	7/6/2025 9:45 PM
99	Kudos to those who currently maintain these spaces.	7/5/2025 3:13 PM
100	Keep it natural. Not tourist traps	7/5/2025 11:37 AM
101	Too many people using parking areas to overnight camp illegally. Signage and enforcement	7/5/2025 8:59 AM

Burt Township Recreation Survey 2025

	needed	
102	Keep it simple. work on improving what you have versus creating more. More buildings, more space mean taxes needed. Dont just spend money because you have it, work towards making what you have better with a low cost / low maintenance approach. There are many existing spaces, some great, some need help and could become much better with alittle TLC and change.	7/5/2025 8:38 AM
103	Can't support tourism at the loss of affordable housing and taxes for people who are labor force	7/4/2025 2:23 PM
104	Be active on every state and federal grant program. Get the local US Representative involved and supporting.	7/4/2025 1:23 PM
105	No	7/4/2025 9:12 AM
106	No	7/4/2025 7:39 AM
107	Not to add, but to reiterate, stop the sand from filling in the bay!	7/3/2025 6:35 PM
108	Better sidewalks and pedestrian walkway signs/pavement striping from Bayshore to EMS building and end of M-77.	7/3/2025 6:23 PM
109	No, thank you for asking for input.	7/3/2025 4:32 PM
110	No	7/3/2025 3:49 PM
111	Nah	7/2/2025 2:42 PM
112	Thanks for asking.	7/1/2025 4:12 PM
113	No.	7/1/2025 12:44 AM
114	I think the township does a great job and please keep up the good work	6/28/2025 9:43 AM
115	pave marina parking lot	6/26/2025 7:17 PM
116	Please focus on QUIET activities. ATVs have ruined Burt Township in the past ten years.	6/26/2025 1:39 PM
117	not at this time.	6/26/2025 1:38 PM
118	No	6/26/2025 12:52 PM
119	No	6/26/2025 12:01 PM
120	Keep on keeping on!! It's looking better and better every year. Love the new looking community center.	6/26/2025 11:26 AM
121	have a little walking tour once or twice a year to bring residents to the parks and talk about how the parks were developed (so and so donated the land, etc.) and what kinds of things are expected for the future. invite the historical society and other community groups to take a specific and active role of some part of keeping the parks nice or improvement them. (for example: historical society - signage; sportsmans club - fish station and fishing areas; women's club - beautification; school - signs and benches and picnic tables).	6/26/2025 11:10 AM

B Appendix

GRANT HISTORY

YEAR: 1968

Project No: 26-00109

Title: Woodland Park

Amount: \$22,000.00

Description: Campsites with utilities, renovation of existing buildings, picnic tables, playground equipment, benches, LWCF sign.

YEAR: 1975

Project No: 26-00635

Title: Donahey Woods

Amount: \$27,210.00

Description: Acquisition of 25 acres for outdoor recreation, paired with donation.

YEAR: 1984

Project No: 26-01320

Title: Burt Township Parks

Amount: \$10,500.00

Description: Development of sports play field, support facilities, stairways, step ramps, pathways, parking area, softball fence, basketball court.

YEAR: 1987

Project No: TF87-124

Title: Carpenter Creek Beach

Amount: \$7,900.00

Description: Acquisition of one acre parcel to add access to West Bay of Grand Marais with frontage on Carpenter Creek

YEAR: 2014

Project No: Alger-5 year- Burt Township-00582

Title: None given

Amount: \$0

Description: None given

YEAR: 2016

Project No: TF16-0160

Title: Grand Marais Restroom/Shower Building and Fish Cleaning Station

Amount: \$202,500.00

Description: Development to construct a public restroom and shower building with a fish cleaning station at the Grand Marais Marina. The project will serve the marina as well as swimmers from the public beach and visitors. Trailhead signage for water and hiking trail also included.

GRANT NOTES, APPLICATIONS, AND AWARDS

C Appendix

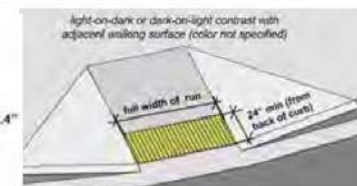
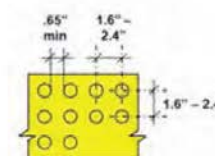
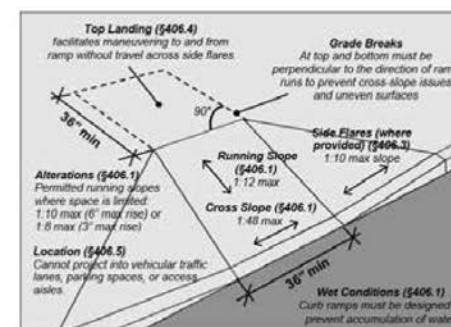
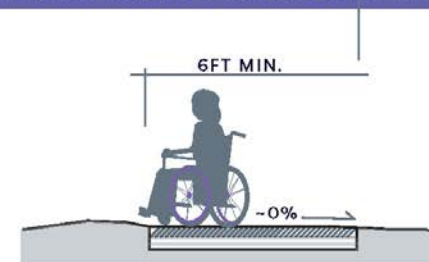
DNR GUIDELINES FOR DESIGN

GUIDELINES FOR DESIGNING ADA COMPLIANT AND UNIVERSALLY ACCESSIBLE PARKS

Michigan DNR Guidelines

ACCESSIBLE TRAILS

- WALKWAYS WITHIN A SITE** - minimum 6 foot width and slopes under 2%
- MULTI-USE TRAIL** - 8 feet, with slopes under 2%, wider width so two people can walk side by side or people can pass
- REGIONAL TRAIL SYSTEM** - at least 10 feet wide, with 1-foot buffers on either side, with slopes under 2%
- SURFACE TREATMENT** - unitary surface (ex. concrete, boardwalk or asphalt, crushed aggregate/screenings that have been "stabilized" or natural soils enhanced with soil stabilizers)
- TRANSITIONS** - plates between trail and pedestrian bridges, decks, etc.
- INTERSECTIONS** - contrasting color treatment and textured surface treatments such as brushed concrete at intersections or interpretive stations to cue people who have vision impairments that there is something to pay attention to at that spot
- Close to level cross slopes (side to side) and very gentle running slopes, no steep sections, larger (greater than 60"x60") level areas at all turns and intersections
- Thoughtfully laid out on the site to maximize the experience with minimal difficulty
- AMENITIES** - All should be accessible including: benches, restrooms (port-a-johns), drinking fountains, etc.



Quick reference of minimum requirements for accessible spaces. The 2010 American with Disabilities Act Standards for Accessible Design Guidelines provide a comprehensive resource. https://www.ada.gov/2010ADASTandards_index.htm

- Clear width is 36" min for most accessible routes
- Surfaces: 1/4" max change, slopes less than 5%, firm and stable
- Head Clearance: 80" high and as wide as the route
- Clear Space: min 30" wide by 48" deep located at element
- Viewing: clear from 32"-51" height
- Maneuvering space: 60"x60" min and level, at entries and places for change of direction
- Transferable height: 17"-19" with transfer supports
- Knee Clearance: 27" high by 30" wide by 25" deep
- Table tops, counters, and rail heights: max 34" high
- Reach range: 48" max height forward and 15" min low side
- Operation: operating mechanism that is operable with one hand and does not require tight pinch/grasp/wrist twist to open

GUIDELINES FOR DESIGNING ADA COMPLIANT AND UNIVERSALLY ACCESSIBLE PARKS

BEACH

- Routes over the beach and into the water, can be portable/temporary matting if it needs to be taken in and out for beach cleaning/dragging or in the off season
- Wide enough for side by side walking/passing
- At beach route end have an accessible area at the waters edge large enough to park multiple chairs while the owners are in the water
- With a transfer system at the waters edge so people can get down to the ground level and into the water.



TRANSFER STATION

FISHING DOCK + VIEWING DECK

- More than 25% of the rails are lowered in various locations or no rails at all with only an edge treatment to prevent roll off
- Sitting benches (all with backs and arm rests) scattered about so anglers can choose to sit or stand to fish
- Tackle box stands next to one bench end (not both) leaving one end clear space for sitting side by side with someone in a wheelchair
- A variety of fish landing cutaways strategically placed
- A variety of accessible opportunities—over-water fishing, shore fishing, in-water fishing, etc.
- Transition plates between access route and deck/pier



CAMPING

- Accessible surface on all sites, including rustic sites
- Larger spaces to accommodate side lifts on campers and vehicles
- Accessible tables, grills (15" minimum, 34" maximum height), and fire rings on all sites
- Centrally located restrooms on easy routes from each site



GUIDELINES FOR DESIGNING ADA COMPLIANT AND UNIVERSALLY ACCESSIBLE PARKS

SKIING + SLEDDING HILL

- Accessible route to top (no steps), possibly using a "magic carpet" lift
- Level surface for sled mounting at hill top
- If staffed, provide ATV transport or have policy that allows personal ATV use
- Transfer at hill bottom to help transfer down to sled and back up into chair/walker



<https://www.movingmountainsap.org/>

SPORT COURTS + FIELDS

- Routes to both sides of all fields and courts, not just end zones
- Accessible seating spaces both ground level and elevated if risers/bleachers are provided
- Accessible seating spaces scattered throughout all viewing areas and levels with companion seating on both sides of the space
- All lowered service windows at all concession areas
- Wider gate openings into court areas (tennis, bocce, basketball) and skate parks to accommodate wider sports wheelchairs
- Routes to both horseshoe pits and along both sides of the route between pits
- Level routes onto bocce courts with sitting benches at both ends



MAGIC CARPET LIFT



GUIDELINES FOR DESIGNING ADA COMPLIANT AND UNIVERSALLY ACCESSIBLE PARKS

PLAYGROUNDS

- Has both ramp and transfer access to all play components
- Ramps to every “getting on spot” or “sit/stand & do it spot” of every play component
- Transfer system from the ground up to the main deck located near the exits of slides and climbers furthest from the ramp onto the structure
- Only unitary safety surface such as poured-in-place or rubber tiles NOT any loose fill materials like shredded rubber, wood chips, engineered wood fiber, or any other non-unitary surface material
- On deck transfer platform at the entry point of every slide
- On deck transfer platform with one open transfer side and one side with transfer steps to every entry/exit point of every climber, so kids climbing up can get down to the deck to move to another component, as they may have left an assistive device at the ground
- A good variety of things to manipulate that make noise or music, have high contrast/bright colors, games that two kids can play (to foster social interaction), Braille and sign language panels to teach awareness, easy to operate with just one hand with a whole fist (does not require tight/pinch/grasp/wrist twist to operate)
- Different high contrast colors for decks versus transfers so kids with low vision can perceive a change in level
- Play panels are located at heights so they can be used from a seated position or standing



GUIDELINES FOR DESIGNING ADA COMPLIANT AND UNIVERSALLY ACCESSIBLE PARKS

BOARDWALKS

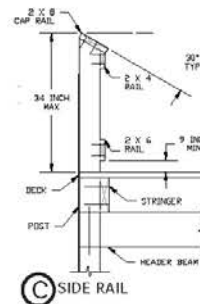
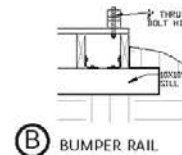
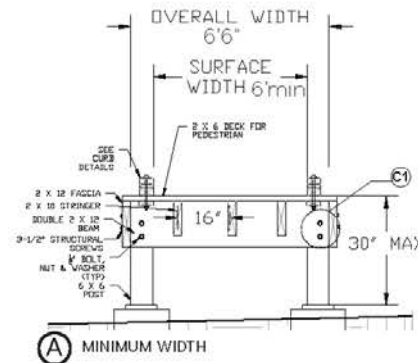
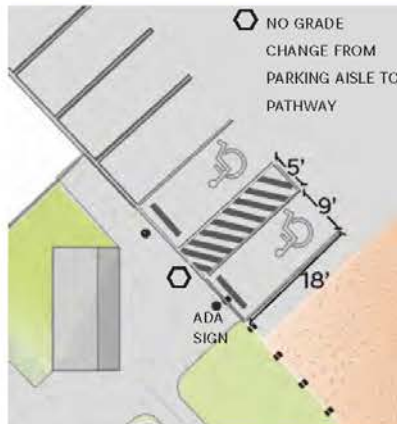
- (A) -6 foot minimum width so two people can walk side by side or people can pass
- (B) -EDGE TREATMENT to prevent roll/step off
- (C) -SIDE RAILS - more than 25% must be lowered for easy viewing in various places along the boardwalk
 - INTERPRETIVE INFORMATION - in a variety of alternative formats such as auditory, large print, Braille, pictures, etc.

NATURE CENTER

- INTERPRETIVE INFORMATION -in a variety of alternative formats such as auditory, large print, Braille, pictures, etc.
- TECHNOLOGY - Creative use such as mp3 players for auditory descriptions (this gives the info. directly to the individual)
- closed loop assistive listening devices and closed circuit captioning of all interpretive presentations
- All displays at lowered heights for sitting or standing viewing
- All operating mechanisms that are operable with one hand and do not require tight/pinch/grasp/wrist twist to operate

PARKING

- More than minimum number of accessible spots
- Each connected directly to an accessible route to the park elements and NOT into the traffic flow
- Thoughtfully located nearest the activity entrance, which might require multiple lots (some near the beach, some near the playground, some near the bathhouse, etc.)



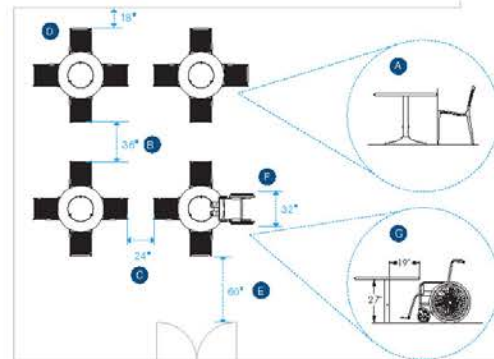
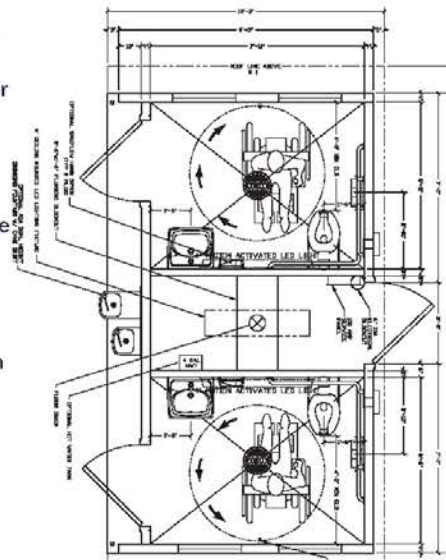
GUIDELINES FOR DESIGNING ADA COMPLIANT AND UNIVERSALLY ACCESSIBLE PARKS

RESTROOMS

- More than the minimum number of accessible units
- Multiple unisex/single user toilet rooms/units so opposite sex care givers can assist; also good for parents of young children of the opposite sex so kids aren't sent alone into the multi-user restroom
- Thoughtfully located near areas of activity such as play areas, beaches, fishing piers, etc.
- Accessible door pulls and water faucet handles
- All accessible port-a-johns, again big enough for individual use or care giver/parental assistance.

PICNIC AREAS + ELEMENTS

- All tables, grills, fire rings, water pumps, etc. are accessible
- All located on accessible routes
- Level routes onto pavilions with no changes of level from path to pavilion surface
- Wider routes and clear space with firm surface around all elements so someone with mobility limits can easily move around the element (table, grill, etc.)
- A variety of table styles, some with clear sitting space on the side, some with extended table tops on the end
- Some fixed tables to ensure they remain accessible (not moved off into a grassy or sandy area, etc.)
- Clear space all around each element so people can approach and use the grill, fire ring, etc. from the front, back and either side
- Grills you can lower/raise the cooking surface with one hand
- Raised fire building surfaces so you can place wood without leaning too far over from a standing or seated position



- A. Distances referenced here assume the front edge of a chair lines up with the edge of a table top.
- B. Allow a minimum of 36" between seat backs to permit wheelchair access between tables.
- C. Allow a minimum of 24" between seat backs to provide a walkway between tables.
- D. Allow a minimum of 18" between a seat back and a wall or edge to permit access to all seats.
- E. Allow a minimum of 60° between a seat back and a site's entrance to allow for easy egress.
- F. Please refer to ADA guidelines and local codes to determine the number of wheelchair accessible seating spaces needed in a seating group. It is recommended that a minimum of 32" in width be provided to accommodate a wheelchair at a table.
- G. The minimum height and depth clearances necessary to accommodate a wheelchair at a table are 27" and 19", respectively.

D

Appendix

MARINA MAINTENANCE

Marina Maintenance and Replacement	
Annual Maintenance Schedule	
Repairs & Maintenance:	\$22,000
Building Upkeep	
Startup/Winterization	
Timber Bumper Posts	
Concrete Sidewalks	
Timber Dock Decking	
Utility Service Fee	
Annual Supplies:	\$8,000
Harbormaster building supplies	
Cleaning & toiletry products	
Annual Services:	\$20,000
Lawn Care	
Trash Disposal	
Septic Tank Pumping (as needed)	

Minor Infrastructure and Repairs:	
Sheet-pile painting (2026)	\$10,000
Wayfinding Signage (2027)	\$10,000
New Harbormaster Building (2028)	\$7,500
Fish Cleaning Station Fixtures (2030)	\$5,000
Pavement Markings (2031)	\$5,000
Large-scale Maintenance & Replacement:	
Parking Lot Improvements (2026)	\$225,000
Maintenance Dredging (2028)	\$150,000
Boat Launch Expansion (2029)	\$150,000
Marina Reconfiguration Project (2031)	\$2,200,000
Note: Annual maintenance, repairs, and marina improvement projects are subject to change and are only intended to provide an initial estimate for projected marina operational costs and potential marina improvement projects.	